

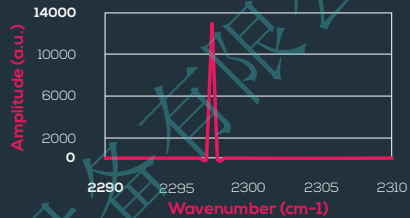
FOR HIGH PERFORMANCE CHEMICAL ANALYSIS

## CHARACTERISTICS

- ▶ Quantum Cascade Lasers for single gas detection
- ▶ Distributed feedback laser (DFB) for high performance spectroscopy
- ▶ Quasi continuous wave (QCW) = lower consumption
- ▶ Continuous wave (CW) = high performance
- ▶ High volume capability

▶ Fibered version available with  **SelenOptics** inside

## SPECIFICATIONS



Type	unirMir-QCW uniMir-CW
Peak emission wavelength	between 3 and 12 $\mu\text{m}$
Operating temperature typ.	room temperature
Tunable range typ.	> 2 $\text{cm}^{-1}$
Output power typ.	1-100 mW
Side-mode suppression ratio typ.	30dB
Cooling system required	QCW : air CW : water or air
Package	Butterfly or HHL

[www.Auniontech.com](http://www.Auniontech.com)