

## CinLine Tool - Product Description -

CINOGY's CinLine tool is a compact and unique tool to measure beam profiles of cw and pulsed laser systems from UV to NIR spectral range. This system includes a special designed diffusion screen and the camera-based CinCam CCD/CMOS beam profiler with imaging optic.

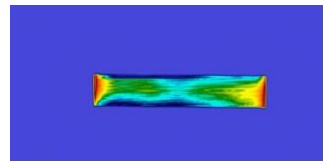
The sophisticated screen architecture enables speckle-free beam profiling especially of laser lines, rectangle profiles or laser with large beam diameter. Several versions are available to open up new opportunities in laser characterization.

Spectral Range*:	320nm – 1150nm
Beam Profiler:	CinCam CMOS / CCD
Input Power (max):	500mW
Input Intensity (max):	10W/cm <sup>2</sup>
Resolution:	Up to 17µm (depends on CinCam type)
Active Areas **::	I. Option: 30mm x 30mm II. Option: 40mm x 20mm III. Option: 60mm x 15mm
Beam Diameter (max):	I. Option: 20mm x 20mm II. Option: 27mm x 13mm III. Option: 40mm x 10mm
Interface:	FireWire 1394b / USB2.0 / GigE

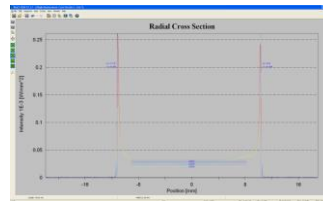
\* UV version on request (200-700nm)

\*\* Further active areas on request

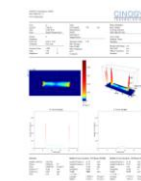
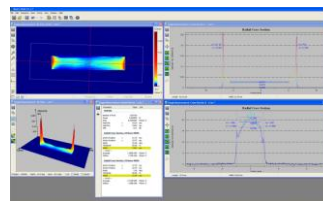
The CinLine system is available with its specifically designed beam profiling software RayCi, which utilizes unique analytical capabilities and incomparable visualization modes. This ensures the highest accuracy in beam profile analysis.



Visualizations:  
2D, 3D, Cross sections,  
Histogram, Results



Results:  
Beam Width,  
Edge Steepness,  
Uniformity,  
Level analysis,  
Roughness,  
etc.



Protocol

The compact measurement system is designed to be used in industry, science, research and development.

- Speckle-free diffusion screen
- Conform to ISO standard
- Pre-assembled and compact measurement system
- Accurate and reliable measurements
- Compatible with cw and pulsed laser systems
- Measurement data as printable protocol

CINOGY's experienced team provides CinLine systems tailored to customer's requirements.

