

OL IS-7600-AM

2-Meter Integrating Sphere

The OL IS-7600-AM is designed for total luminous flux and/or total spectral flux measurement applications. The IS-7600-AM has a diameter of 2-meters and is coated with the rugged, washable, Optolon 2 Integrating Sphere Spray Coating (see Information Sheet IS17).

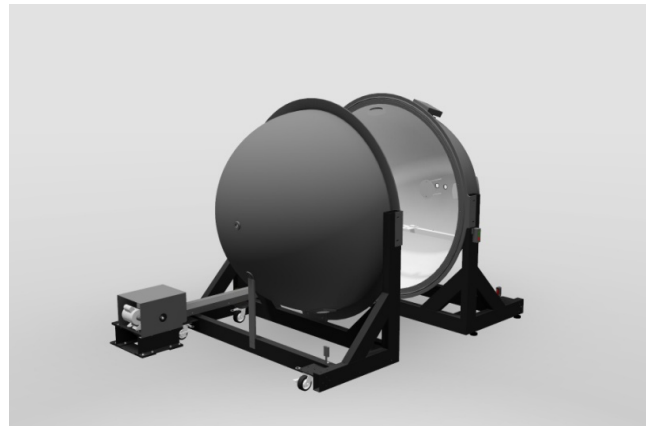
For total luminous flux measurement applications, the IS-7600-AM Integrating Sphere can be obtained as part of a complete measurement system: namely, the IS 7600-AM-TLF Total Luminous Flux Measurement System.

For total spectral flux measurement applications, IS-7600-AM can be interfaced to the OL Series 770 and OL Series 750 Spectroradiometer Systems. Consult factory for recommended system configurations.

The IS-7600-AM consists of two hemispheres each mounted in a rugged frame. The hemispheres separate for ease of opening via motor control for installing or interchanging lamps. The sphere design makes provision for using an auxiliary lamp. Two standard, coated baffles are included: one located between the lamp to be measured and the exit port and one located in front of the auxiliary lamp. These baffles prevent non-integrated incident light from directly reaching the detector port.

Limit switches are used to stop the movement of the hemisphere at the appropriate open and closed positions. The motor drive includes an output shaft safety clutch that engages to remove mechanical power to the chain drive should the movable hemisphere encounter an obstacle during operation. Two additional protection devices, a photo-eye sensor and a safety switch mat are supplied to provide for safe operation of a properly installed system.

Product Datasheet B144 - Revision 4/17



Also, located inside the sphere assembly is a lamp holder mounting plate. The lamp holder plate facilitates the mounting of various types of lamp holders and sockets. The design of each lamp holder positions the lamp near the relative center of the sphere assembly and includes an additional coated baffle as required by the size of the lamp to be measured.

A number of commonly used lamp holders are available for use with the OL IS-7600-AM. Please consult the factory for lamp holders not listed below:

Lamp Holder	Lamp Type
11935	E39/40 Mogul Screw Base
11934	E-26/27 Incandescent Medium Screw Base
11933	E-14 Euro
11939	Adjustable Length Fluorescent (T5/T8/T12)
OL 57W	200-W Total Luminous Flux Standard