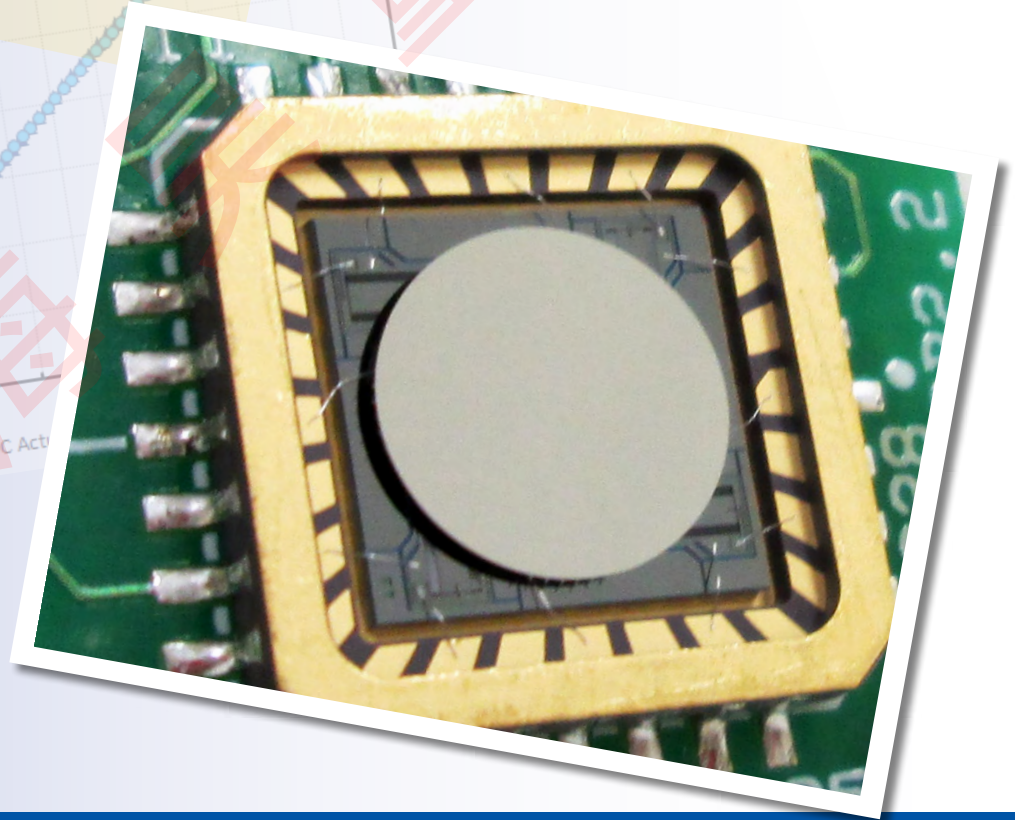
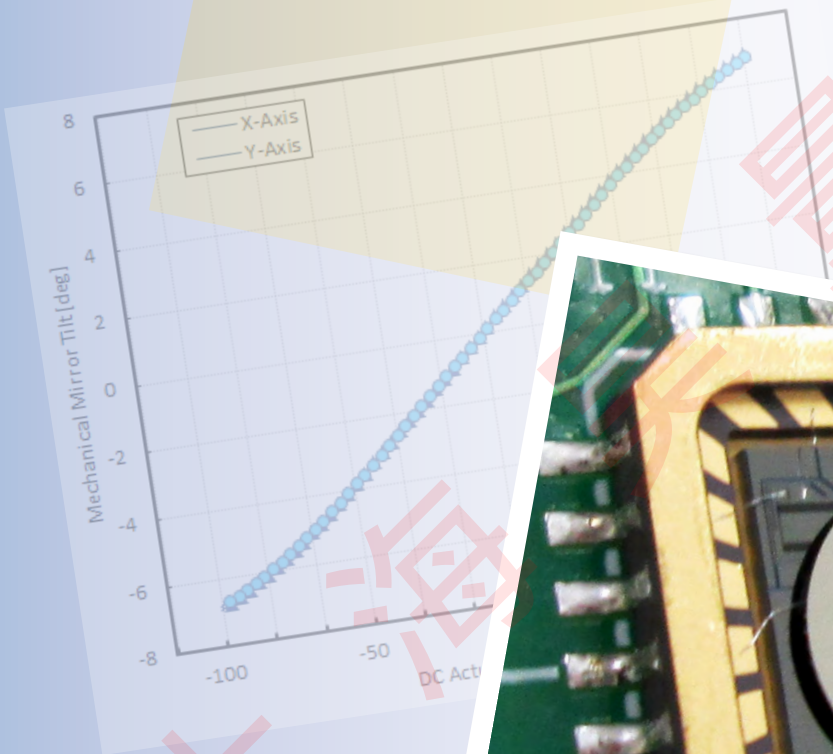


Gimbal-Less Two-Axis Scanning MEMS Micromirrors

Device Datasheet
S5295



Device Parameters Summary

Device ID : S5295

Actuator Name : A7B2.1

Actuator Type : 4-Quadrant (Two-Axis, Bidirectional)

Mirror Type and Size : Bonded mirror of 3.6mm diameter

Mirror Coating : Aluminum

Maximum Angle - X Axis [degrees] : 5.7460

Maximum Angle - Y Axis [degrees] : 5.6746

Maximum Voltage - X Axis [V] : 157

Maximum Voltage - Y Axis [V] : 157

Bias Voltage [V] : 80

Maximum Angle - Coupled Axes [degrees] : 7.4683

Resonant Frequency - X Axis [Hz] : 444

Resonant Frequency - Y Axis [Hz] : 442

Quality Factor- X Axis : 24

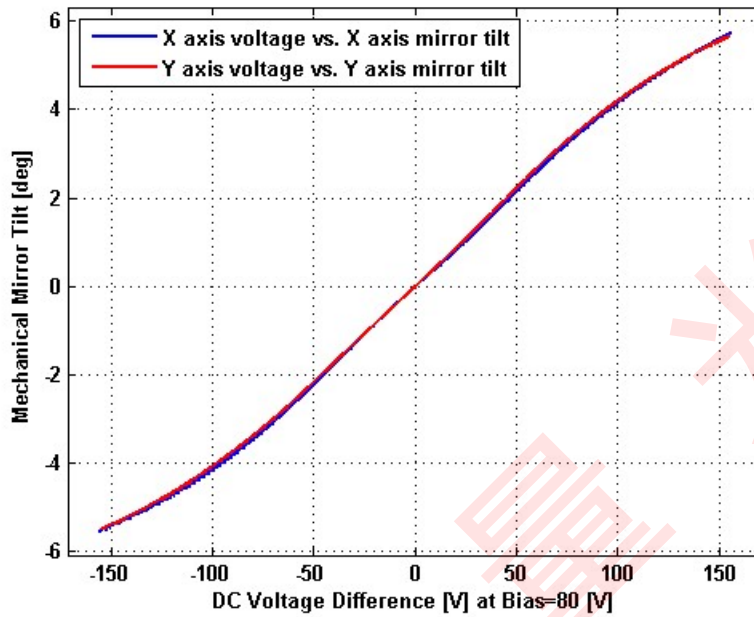
Quality Factor - Y Axis : 22

Recommended LPF Cutoff Frequency (6th Order Bessel) : 200

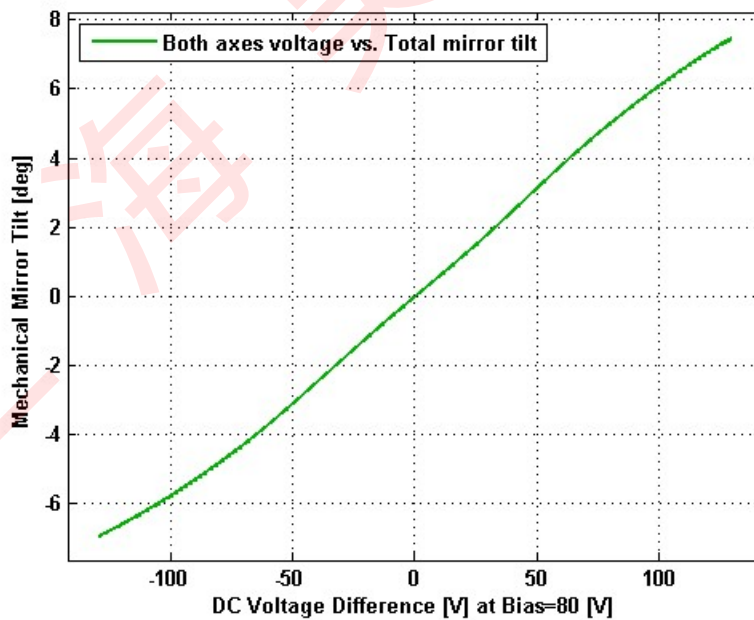
Date and Time Report was Created: 28-Mar-2016 at 16:21:17

Static Response

Voltage vs. Angle - Individual Axes

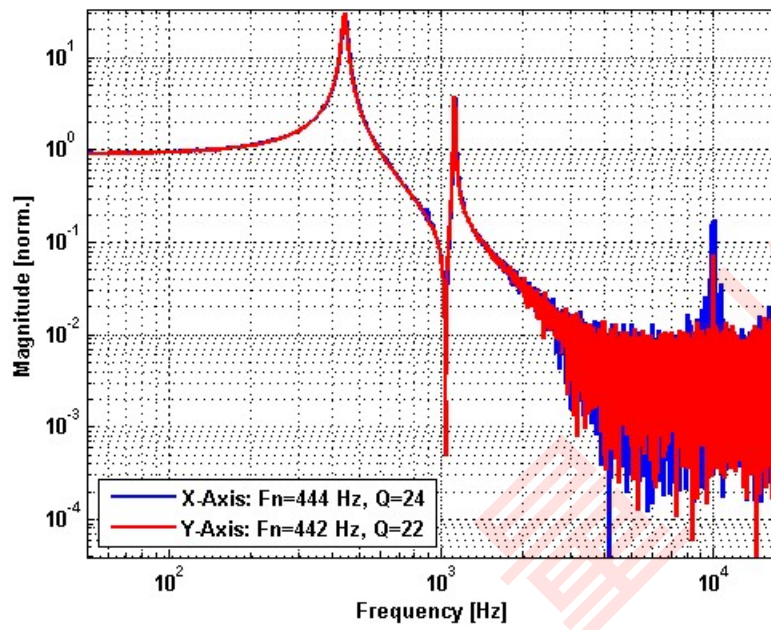


Voltage vs. Angle - Coupled Axes

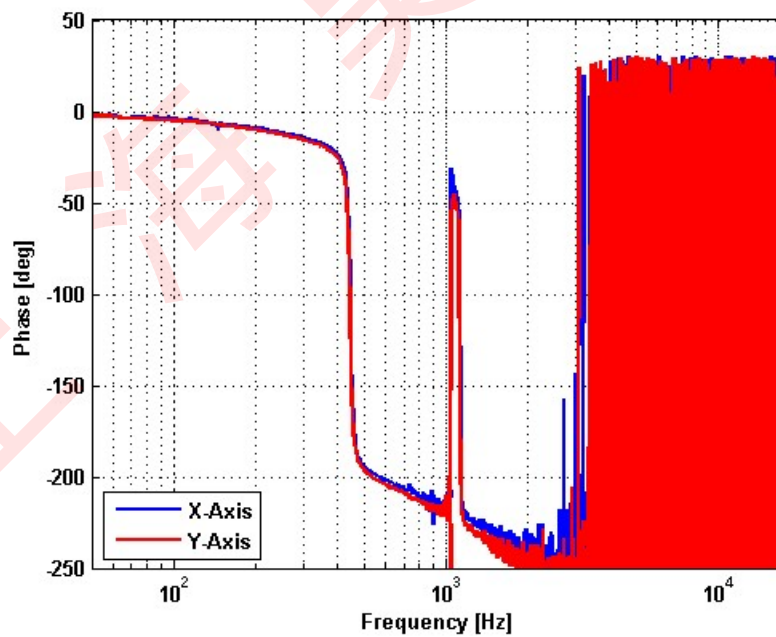


Frequency Response

Small Signal Frequency Response - Magnitude

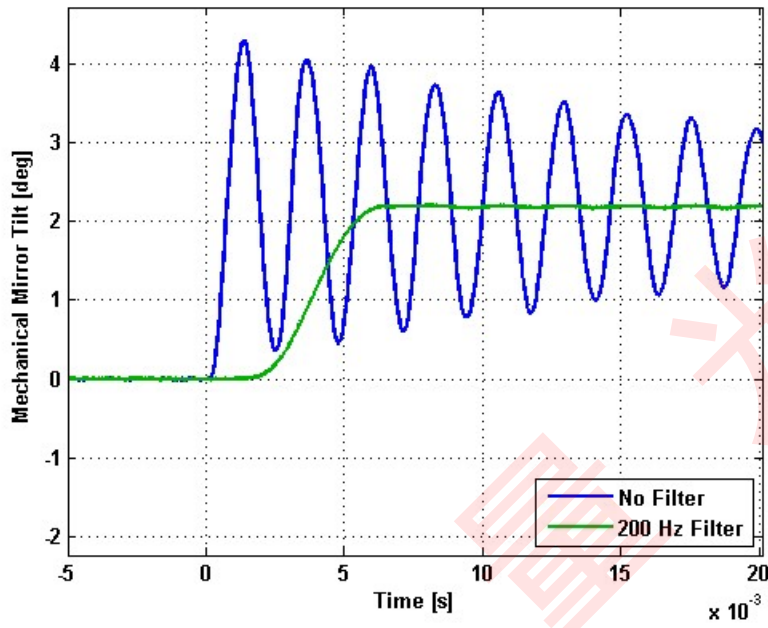


Small Signal Frequency Response - Phase

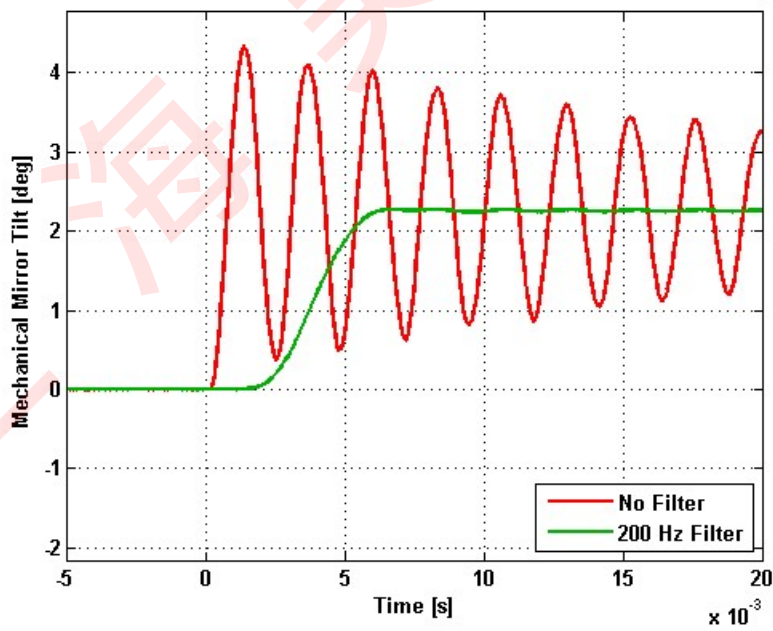


Step Response

X-Axis Step Response

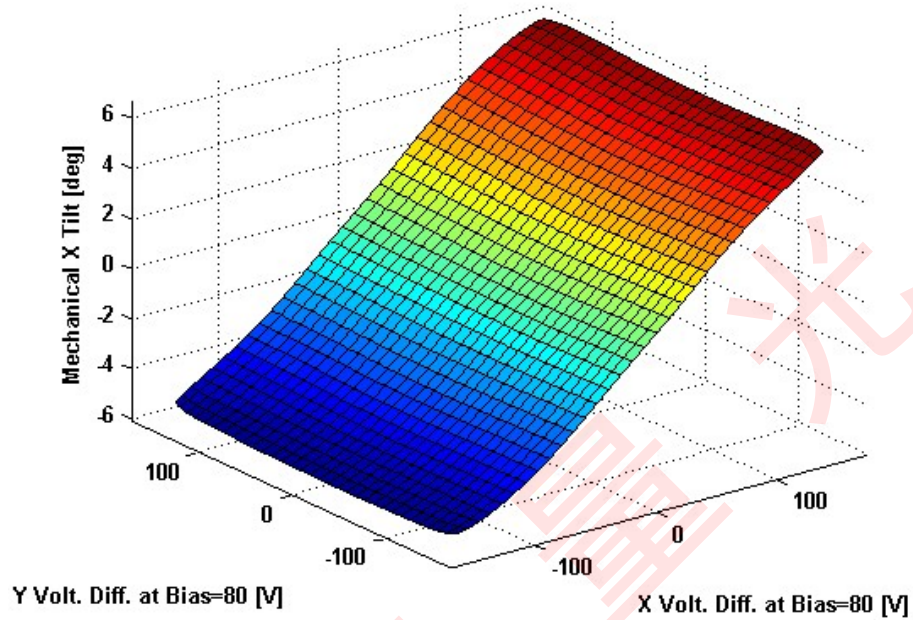


Y-Axis Step Response

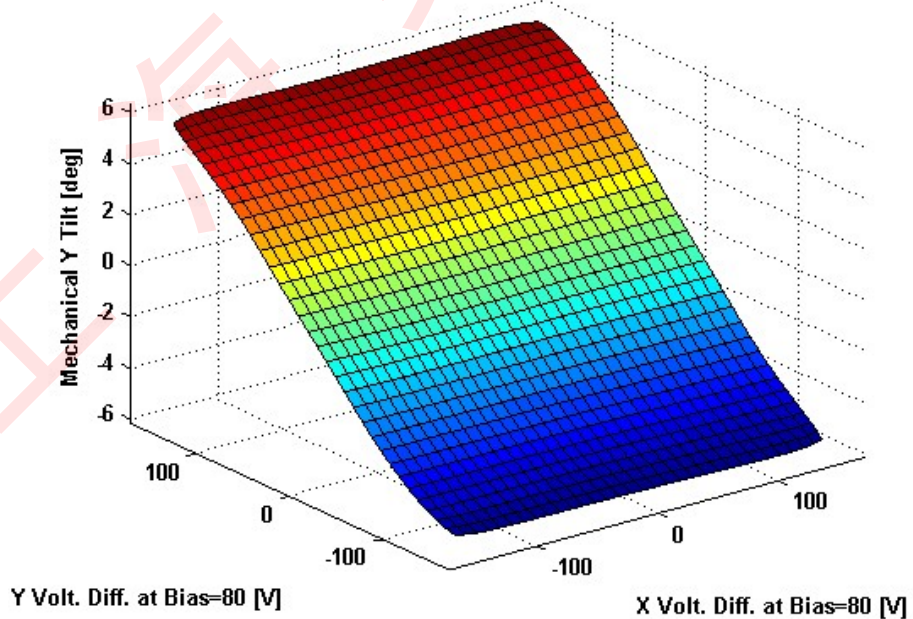


2D Lookup Tables

Voltage vs. X Angle - Lookup Table



Voltage vs. Y Angle - Lookup Table



Y Angle vs. X Angle - Addressable Angles

