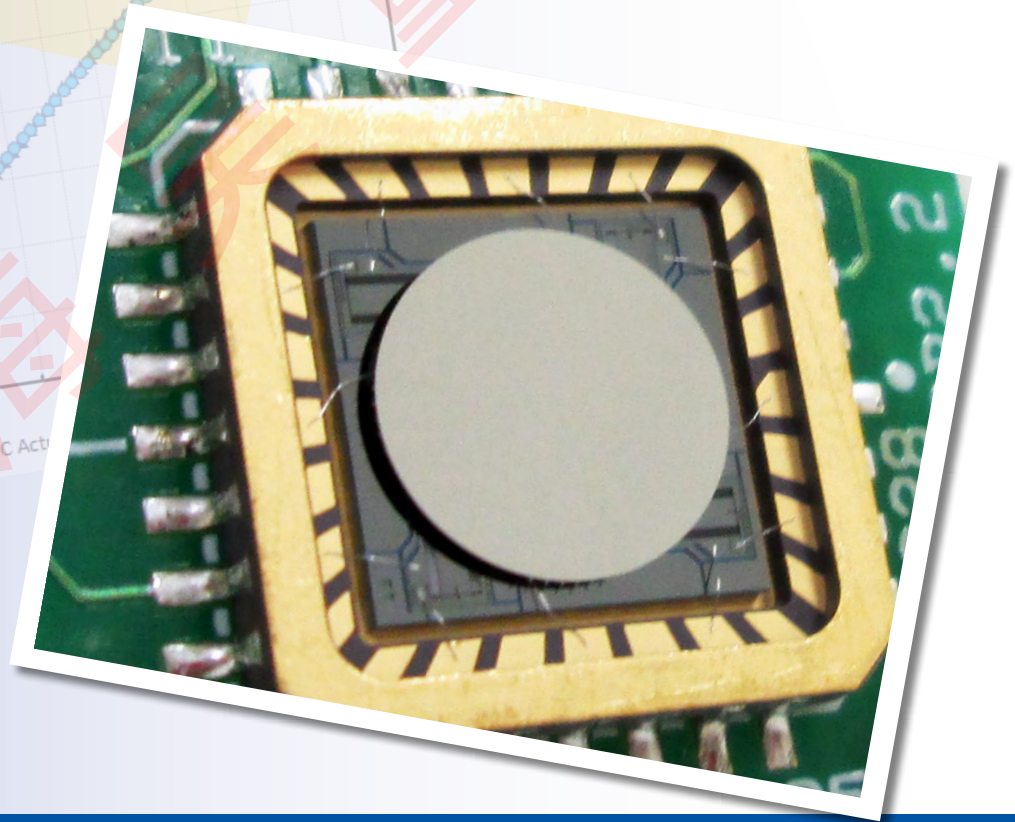
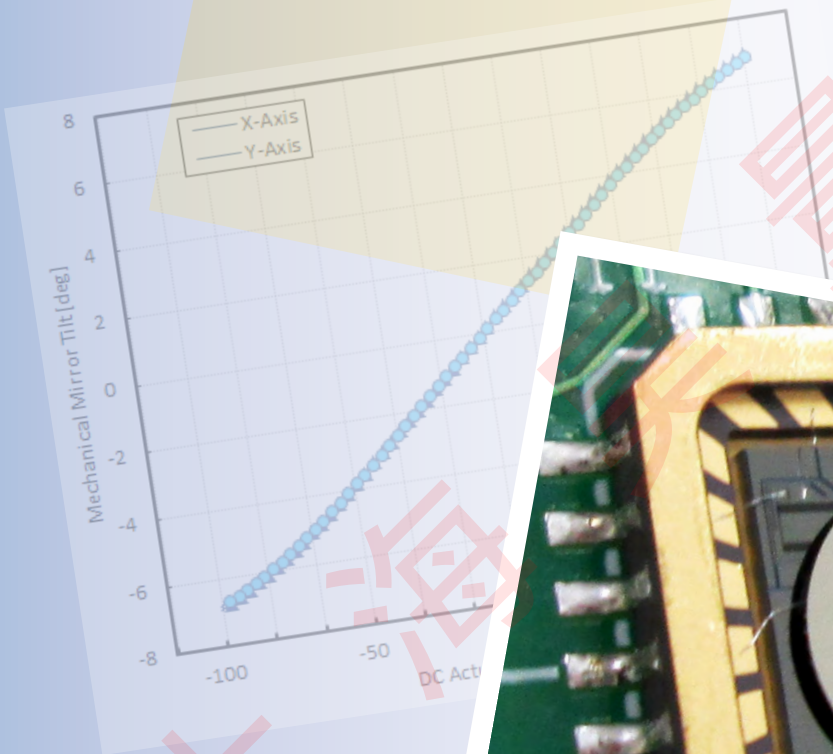


Gimbal-Less Two-Axis Scanning MEMS Micromirrors

Device Datasheet
S40919



Device Parameters Summary

Device ID : S40919

Actuator Name: A8L2.2

Actuator Mode : Gimbal-less Dual-Axis Quasistatic

Mirror Type: Bonded

Mirror Size : 5.0mm diameter

Mirror Coating : Gold

Maximum Mech. Angle - X Axis [degrees] : 5.1928

Maximum Mech. Angle - Y Axis [degrees] : 5.2236

Maximum Vdifference - X Axis [V] : 169

Maximum Vdifference - Y Axis [V] : 170

Driver Bias Voltage (Vbias) [V] : 90

Maximum Mech. Angle - Coupled Axes [degrees] : 7.5693

Resonant Frequency - X Axis [Hz] : 278

Resonant Frequency - Y Axis [Hz] : 278

Quality Factor - X Axis : 27.4000

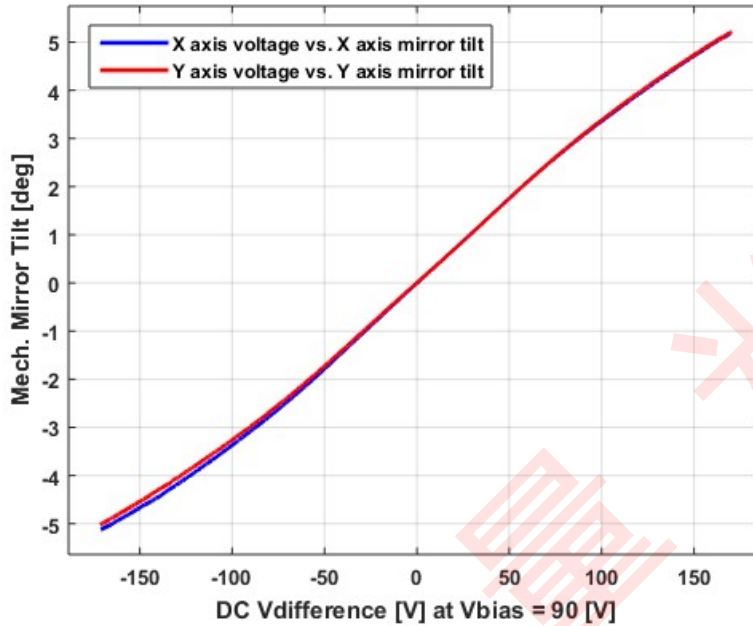
Quality Factor - Y Axis : 28.3000

Recommended LPF Cutoff Frequency (6th Order Bessel) [Hz] : 120

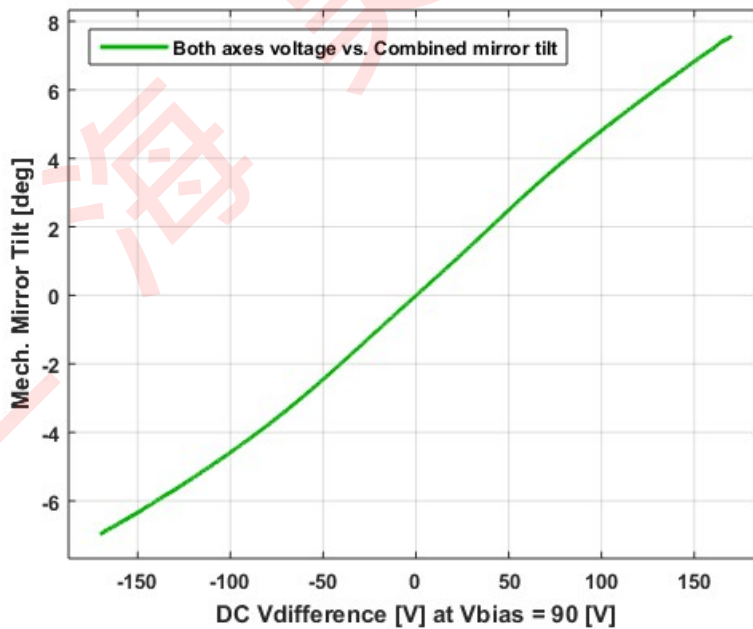
Date and Time Report was Created: 06-Mar-2018 at 18:58:9

Static Response

Voltage vs. Mech. Angle - Individual Axes

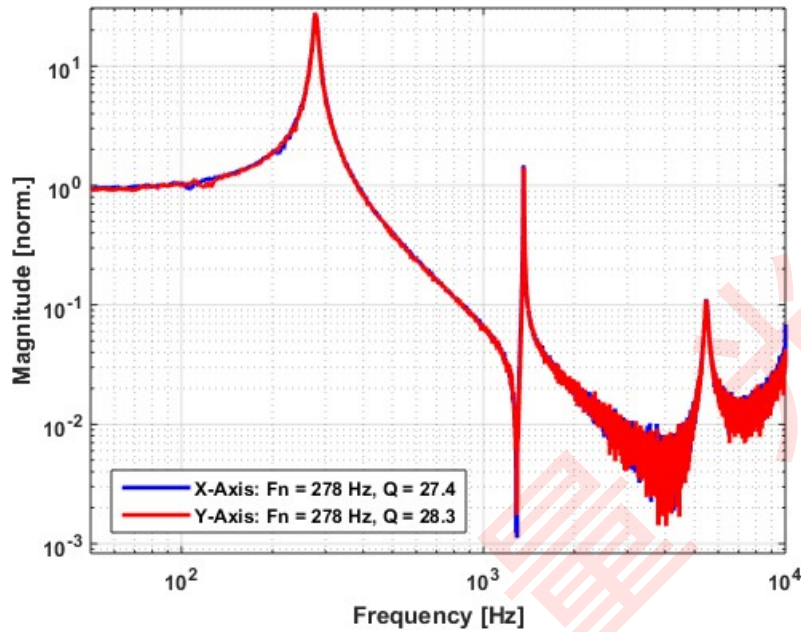


Voltage vs. Mech. Angle - Coupled Axes

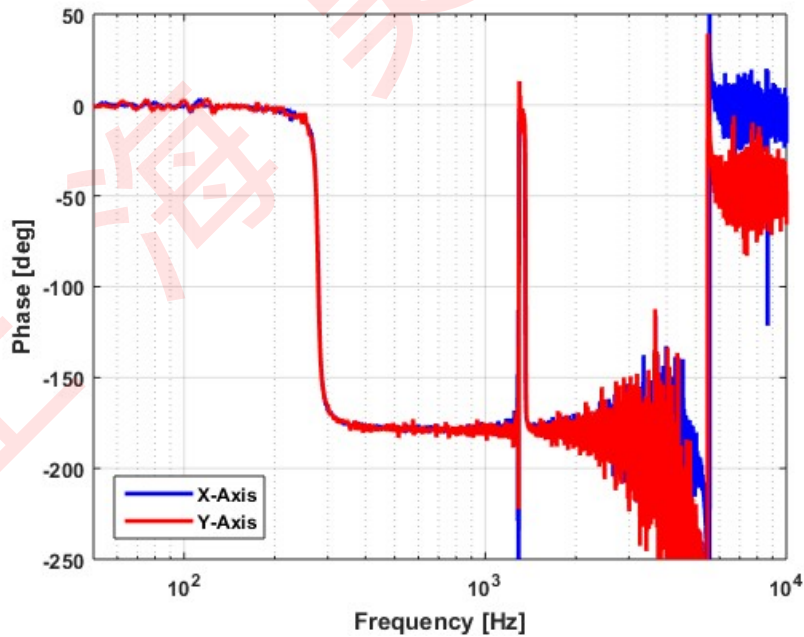


Frequency Response

Small Signal Frequency Response - Magnitude

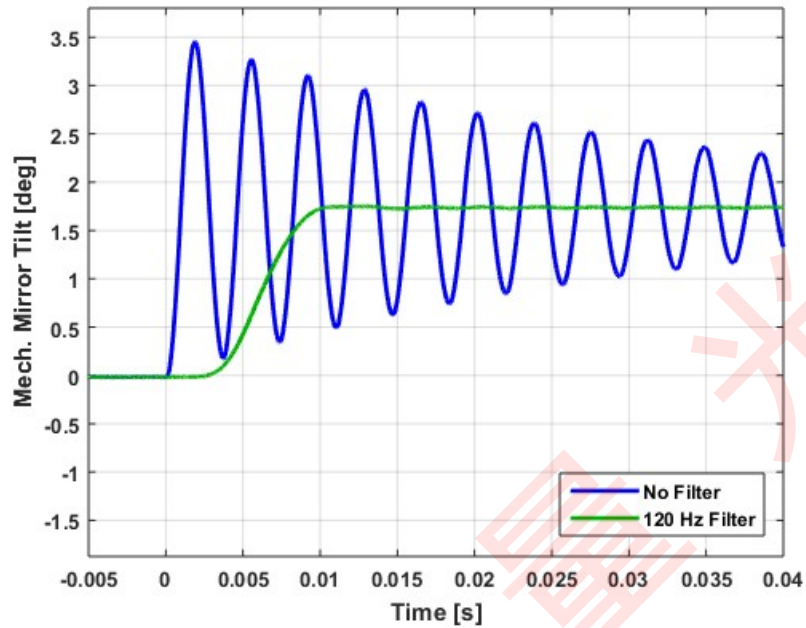


Small Signal Frequency Response - Phase

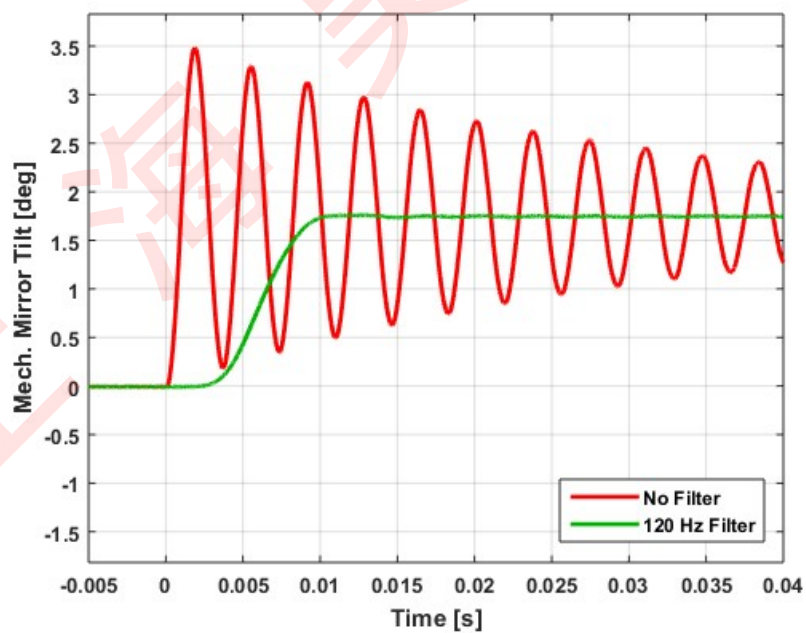


Step Response

X-Axis Step Response

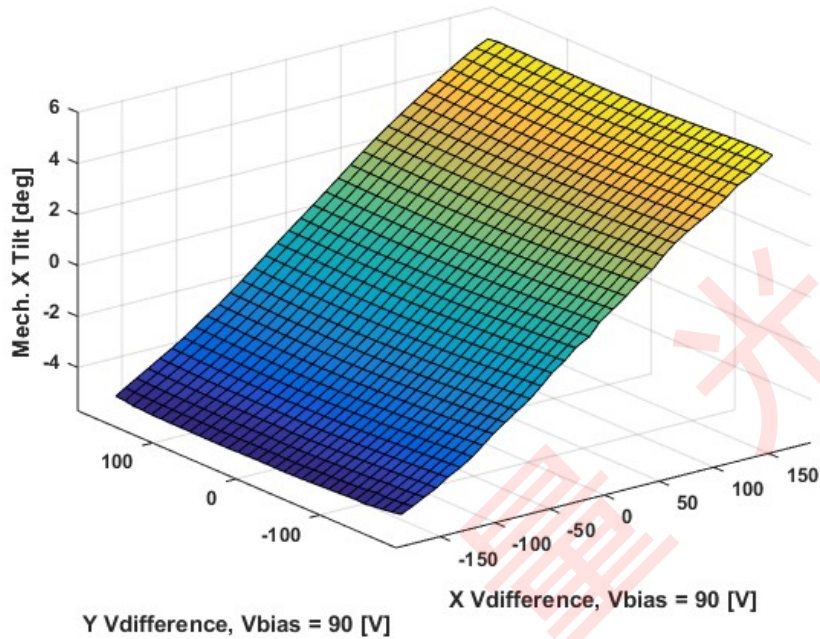


Y-Axis Step Response

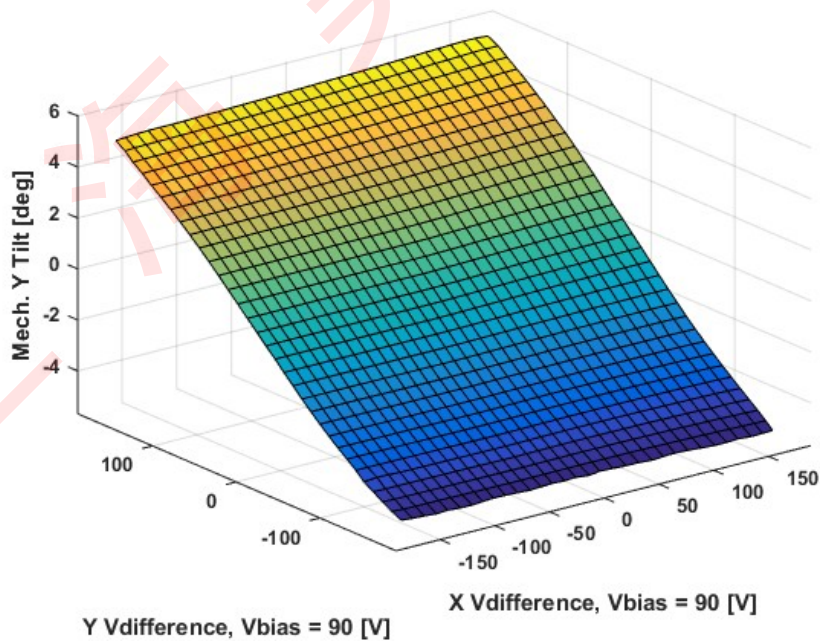


2D Lookup Tables

Voltage vs. X Mech. Angle - Lookup Table



Voltage vs. Y Mech. Angle - Lookup Table



Y vs. X Tilt - Addressable Mech. Angles

