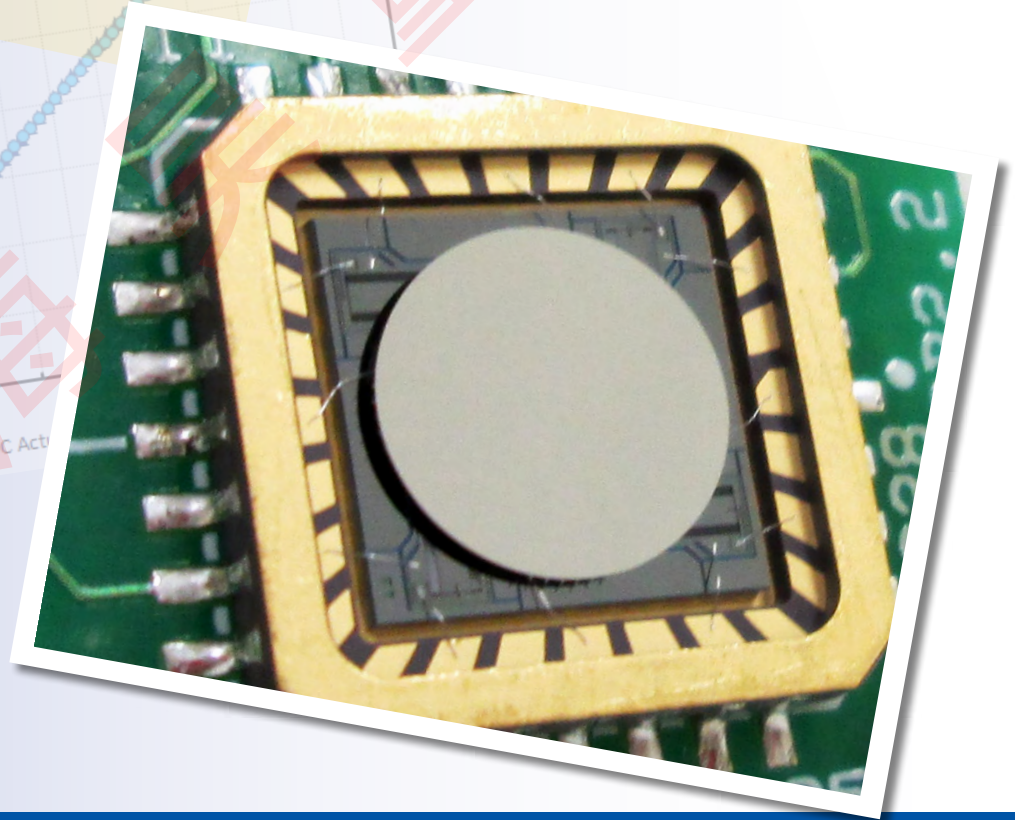
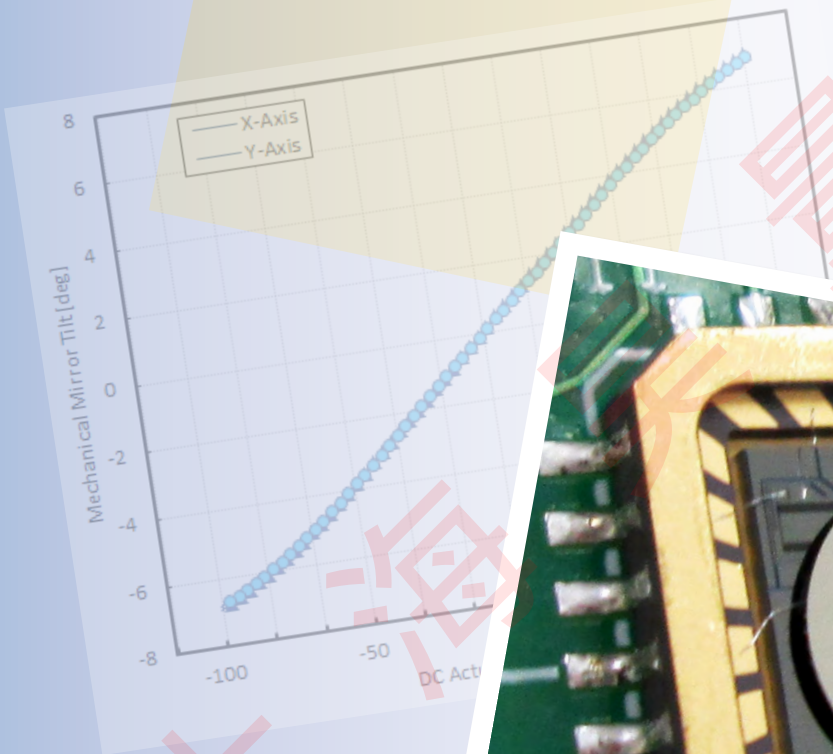


Gimbal-Less Two-Axis Scanning MEMS Micromirrors

Device Datasheet
S41369



Device Parameters Summary

Device ID : S41369

Actuator Name: A5M24.2

Actuator Mode : Gimbal-less Dual-Axis Quasistatic

Mirror Type: Integrated

Mirror Size : 2.4mm diameter

Mirror Coating : Aluminum

Maximum Mech. Angle - X Axis [degrees] : 5.4198

Maximum Mech. Angle - Y Axis [degrees] : 5.3689

Maximum Vdifference - X Axis [V] : 158.4800

Maximum Vdifference - Y Axis [V] : 157.4400

Driver Bias Voltage (Vbias) [V] : 80

Maximum Mech. Angle - Coupled Axes [degrees] : 7.7471

Resonant Frequency - X Axis [Hz] : 901

Resonant Frequency - Y Axis [Hz] : 905

Quality Factor - X Axis : 82.6000

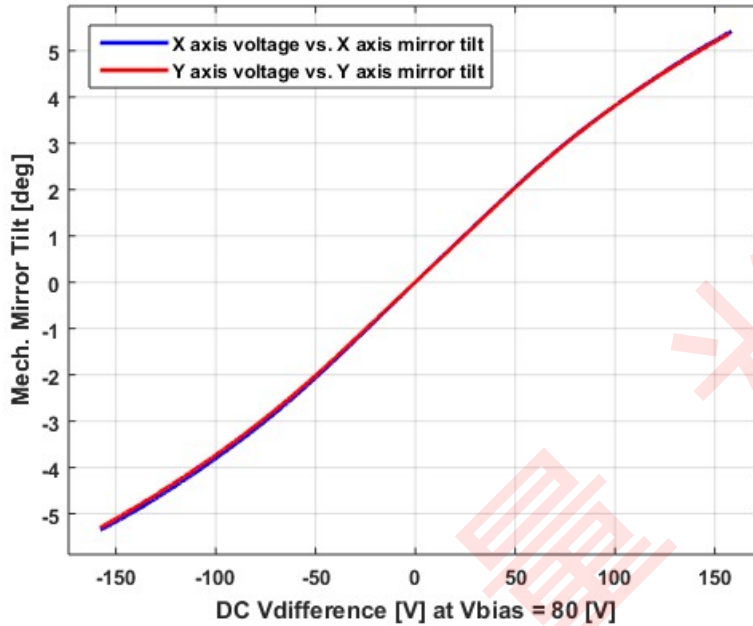
Quality Factor - Y Axis : 77.2000

Recommended LPF Cutoff Frequency (6th Order Bessel) [Hz] : 300

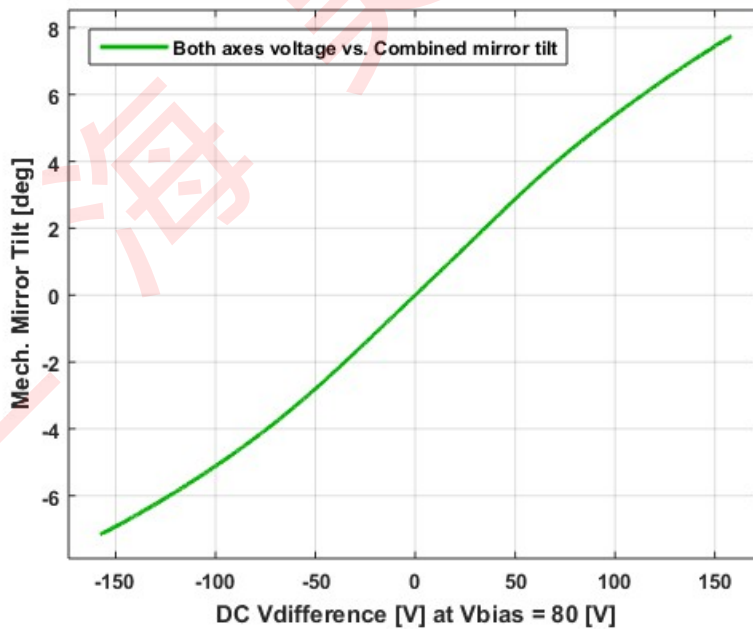
Date and Time Report was Created: 30-May-2018 at 19:27:51

Static Response

Voltage vs. Mech. Angle - Individual Axes

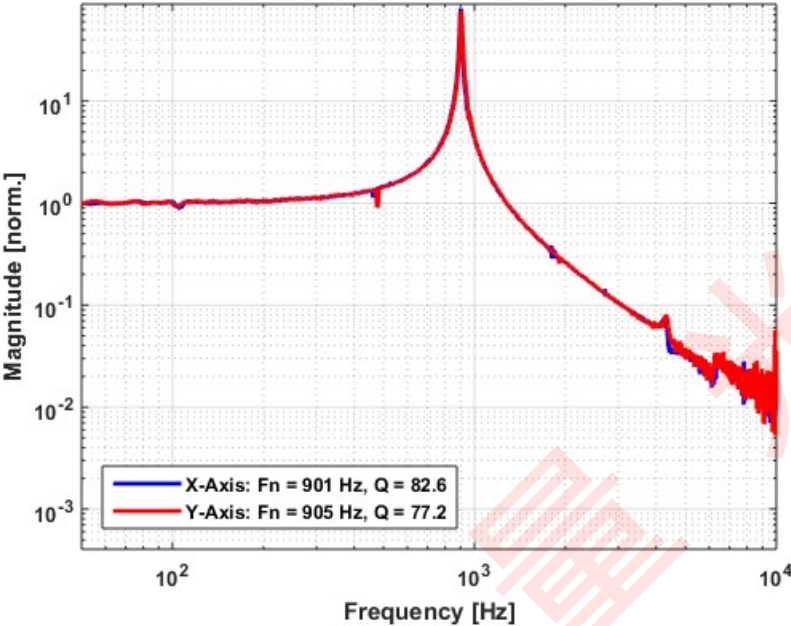


Voltage vs. Mech. Angle - Coupled Axes

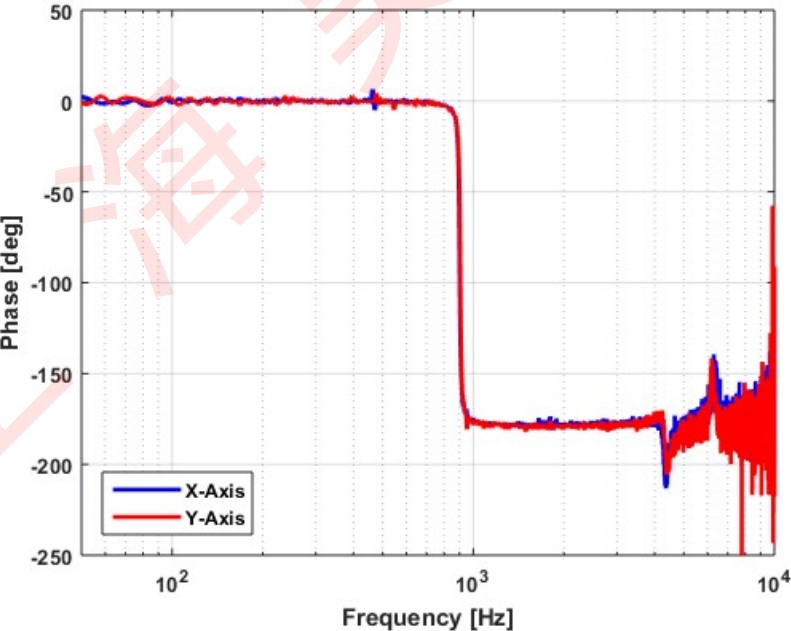


Frequency Response

Small Signal Frequency Response - Magnitude

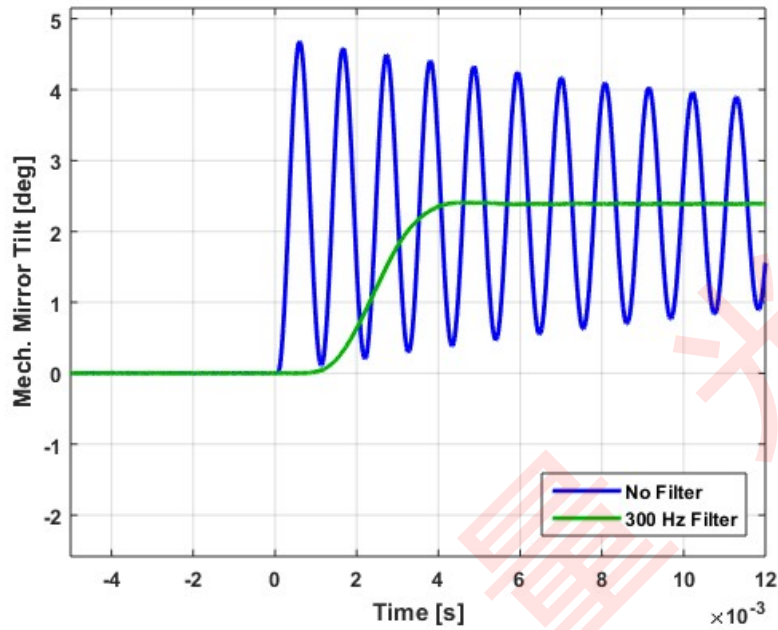


Small Signal Frequency Response - Phase

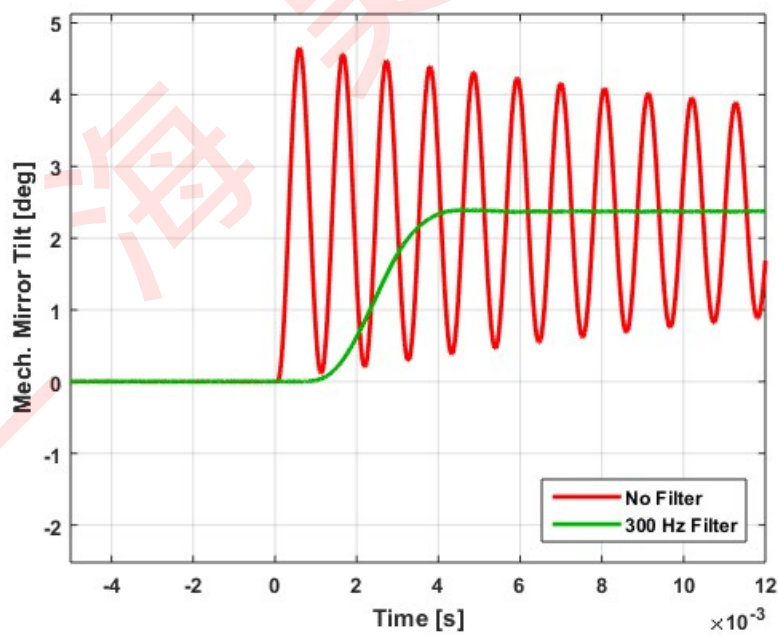


Step Response

X-Axis Step Response

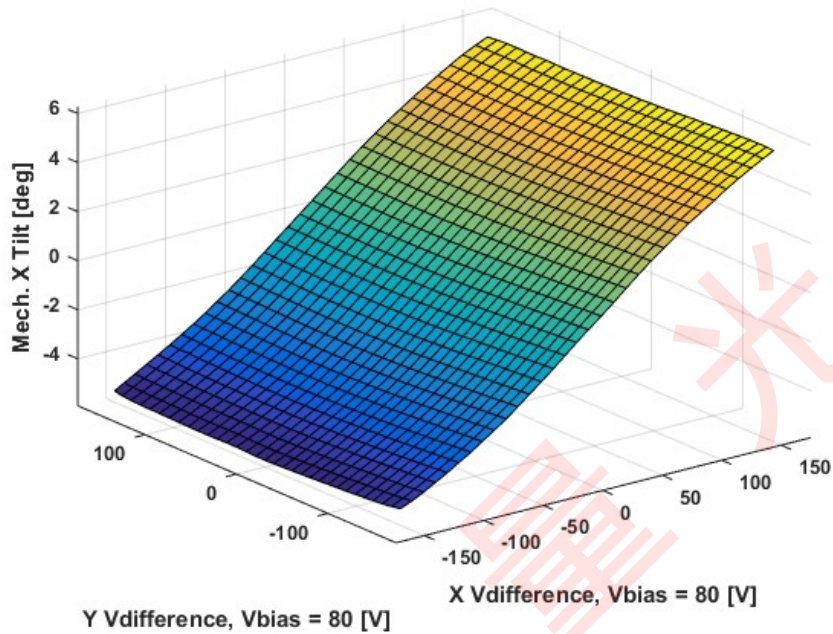


Y-Axis Step Response

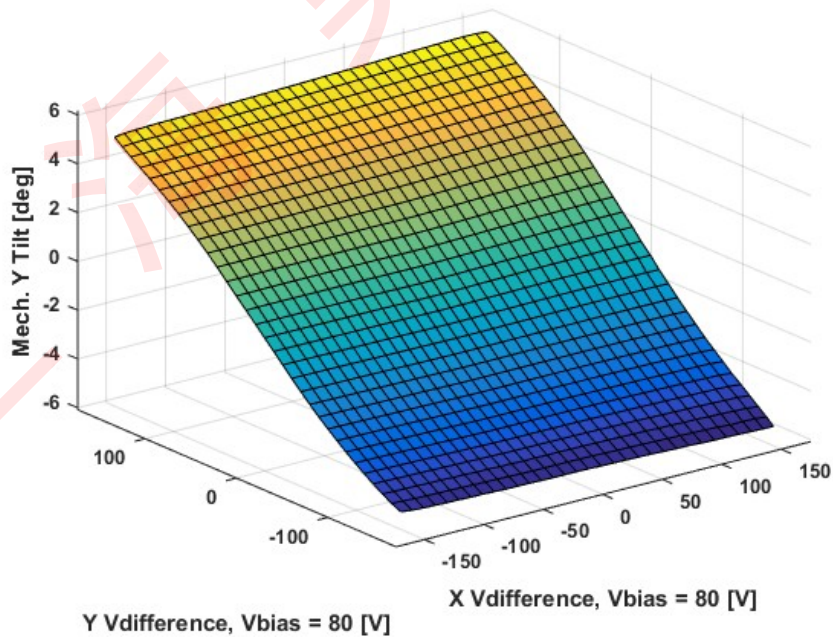


2D Lookup Tables

Voltage vs. X Mech. Angle - Lookup Table



Voltage vs. Y Mech. Angle - Lookup Table



Y vs. X Tilt - Addressable Mech. Angles

