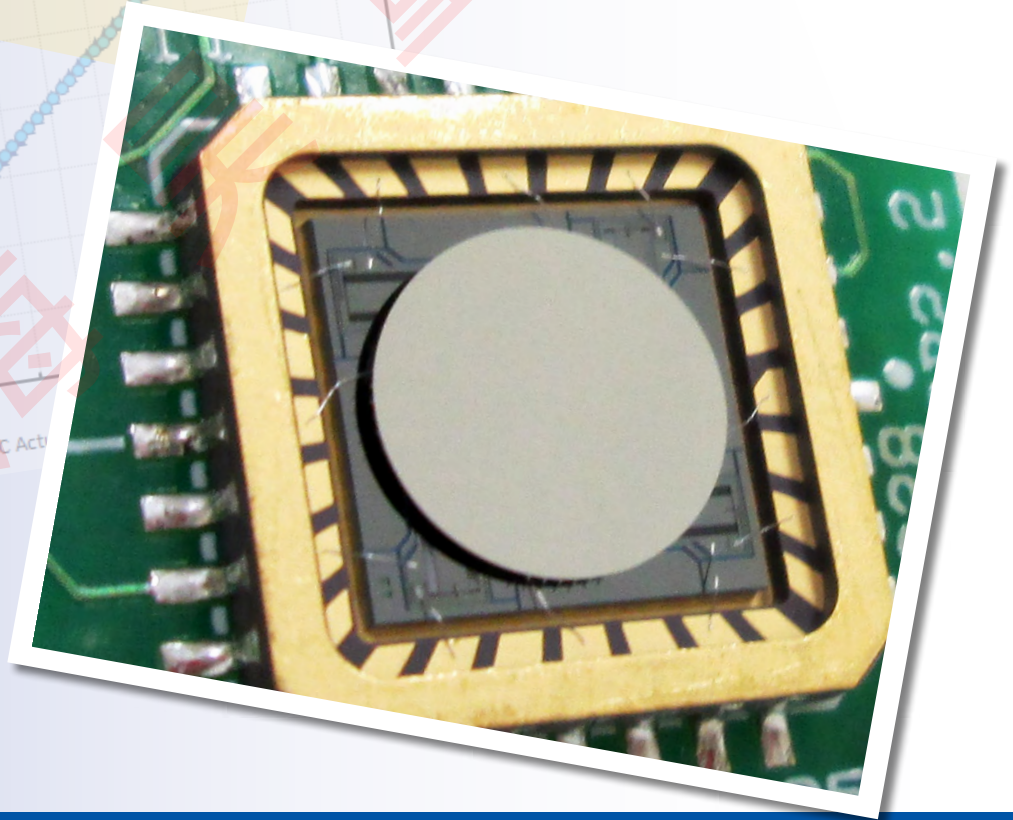
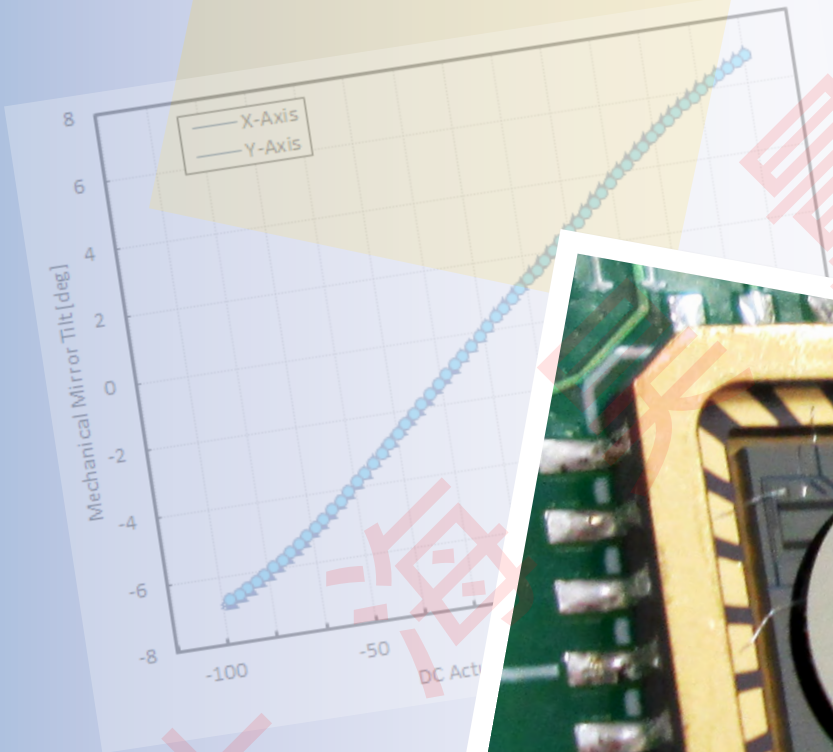


# Gimbal-Less Two-Axis Scanning MEMS Micromirrors

Device Datasheet  
S45888



---

# Device Parameters Summary

**Device ID :** S45888

**Actuator Type:** A5L3.3(C2)

**Actuator Mode :** Gimbal-less Dual-Axis Quasistatic

**Mirror Type and Size :** Bonded mirror of 2.4mm diameter

**Mirror Coating :** Aluminum

**Maximum Mech. Angle - X Axis [degrees] :** 4.4129

**Maximum Mech. Angle - Y Axis [degrees] :** 4.4111

**Maximum Vdifference - X Axis [V] :** 180

**Maximum Vdifference - Y Axis [V] :** 180

**Driver Bias Voltage (Vbias) [V] :** 90

**Maximum Mech. Angle - Coupled Axes [degrees] :** 5.5805

**Resonant Frequency - X Axis [Hz] :** 1194

**Resonant Frequency - Y Axis [Hz] :** 1189

**Quality Factor - X Axis :** 126

**Quality Factor - Y Axis :** 116

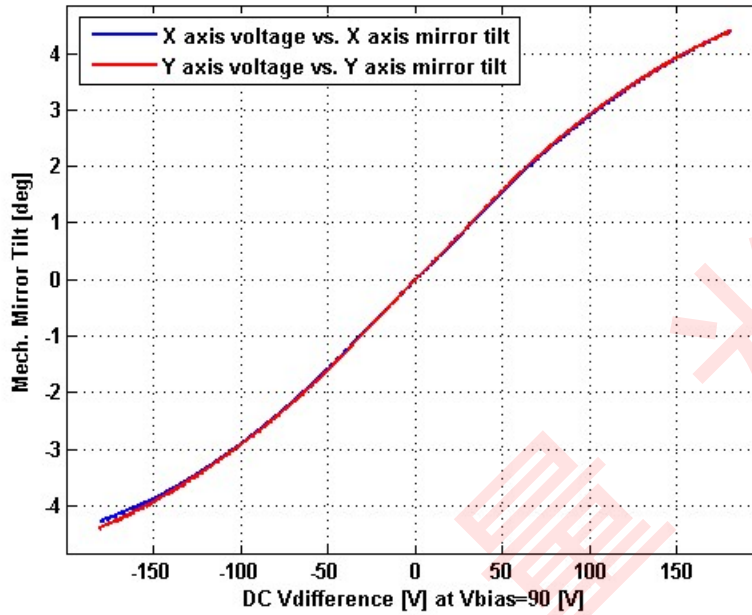
**Recommended LPF Cutoff Frequency (6th Order Bessel) [Hz] :** 420

**Date and Time Report was Created:** 16-Aug-2019 at 10:39:33

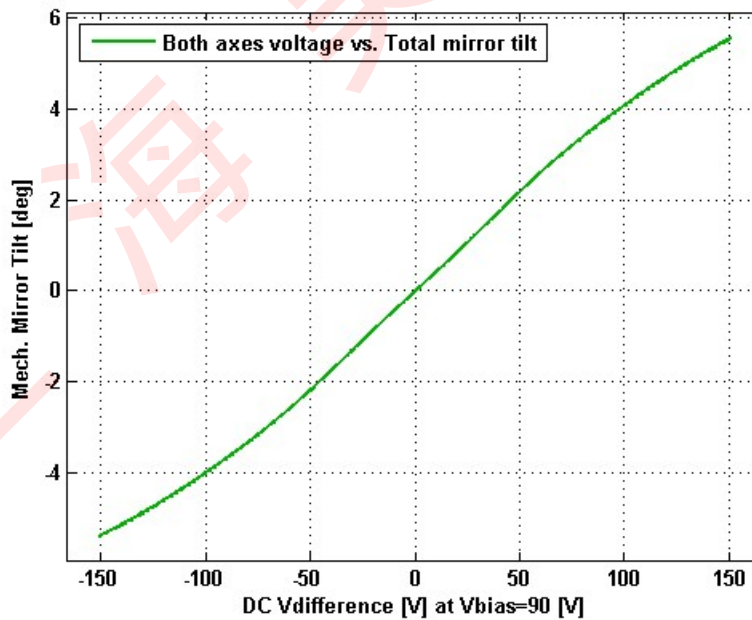
---

# Static Response

## Voltage vs. Mech. Angle - Individual Axes

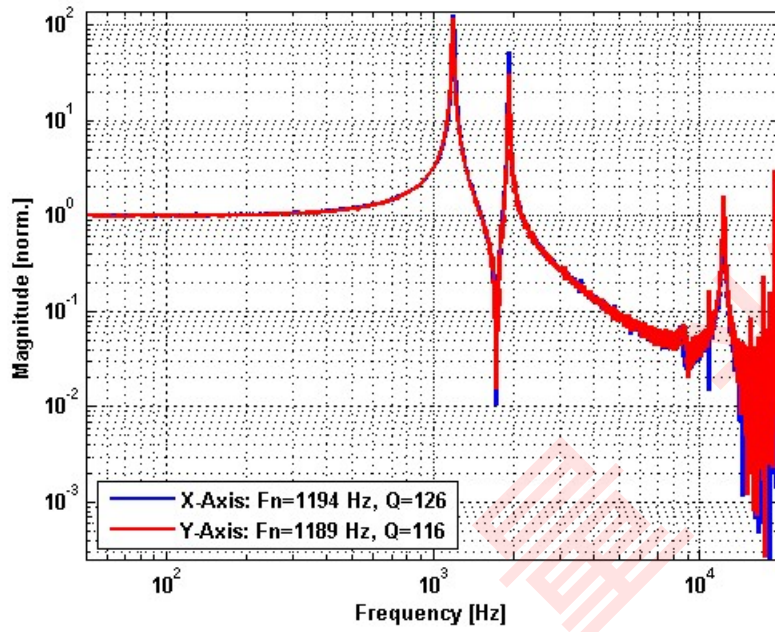


## Voltage vs. Mech. Angle - Coupled Axes

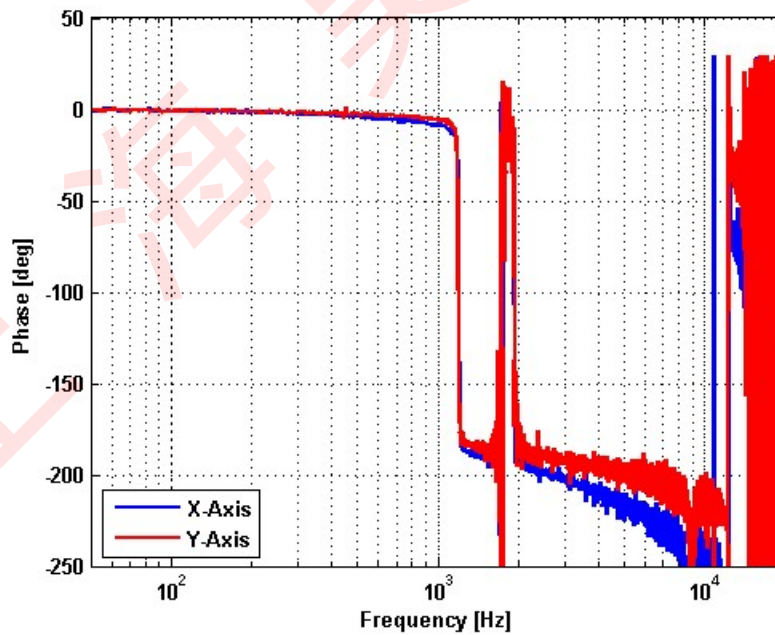


# Frequency Response

## Small Signal Frequency Response - Magnitude

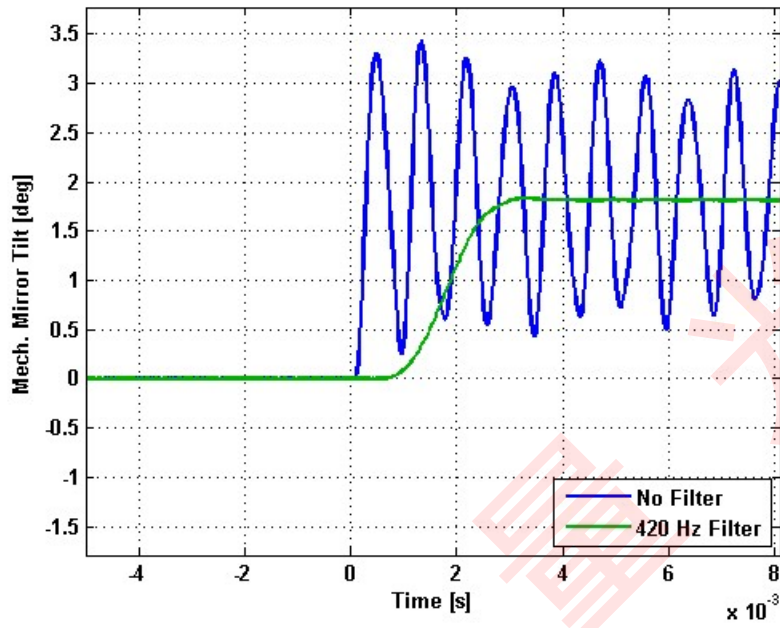


## Small Signal Frequency Response - Phase

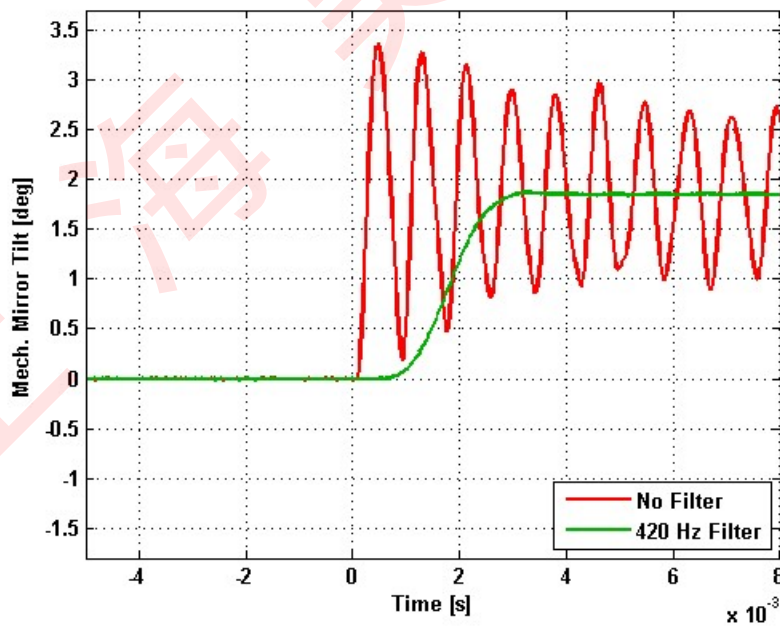


# Step Response

## X-Axis Step Response



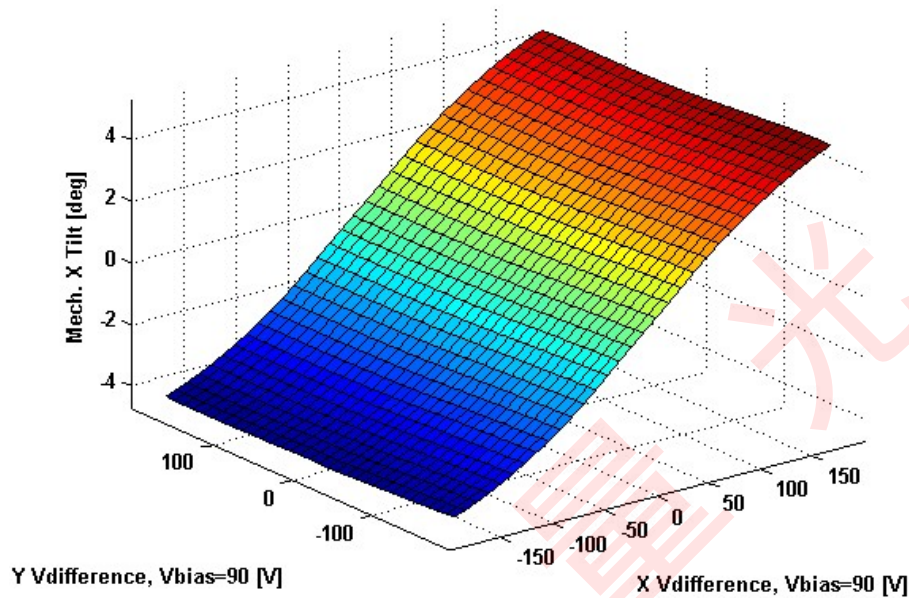
## Y-Axis Step Response



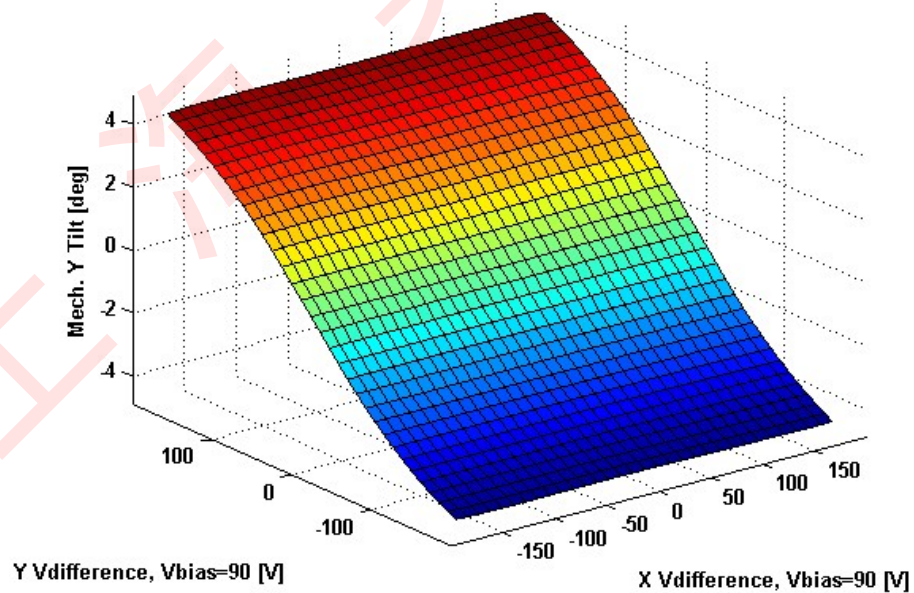
---

# 2D Lookup Tables

## Voltage vs. X Mech. Angle - Lookup Table



## Voltage vs. Y Mech. Angle - Lookup Table



# Y vs. X Tilt - Addressable Mech. Angles

