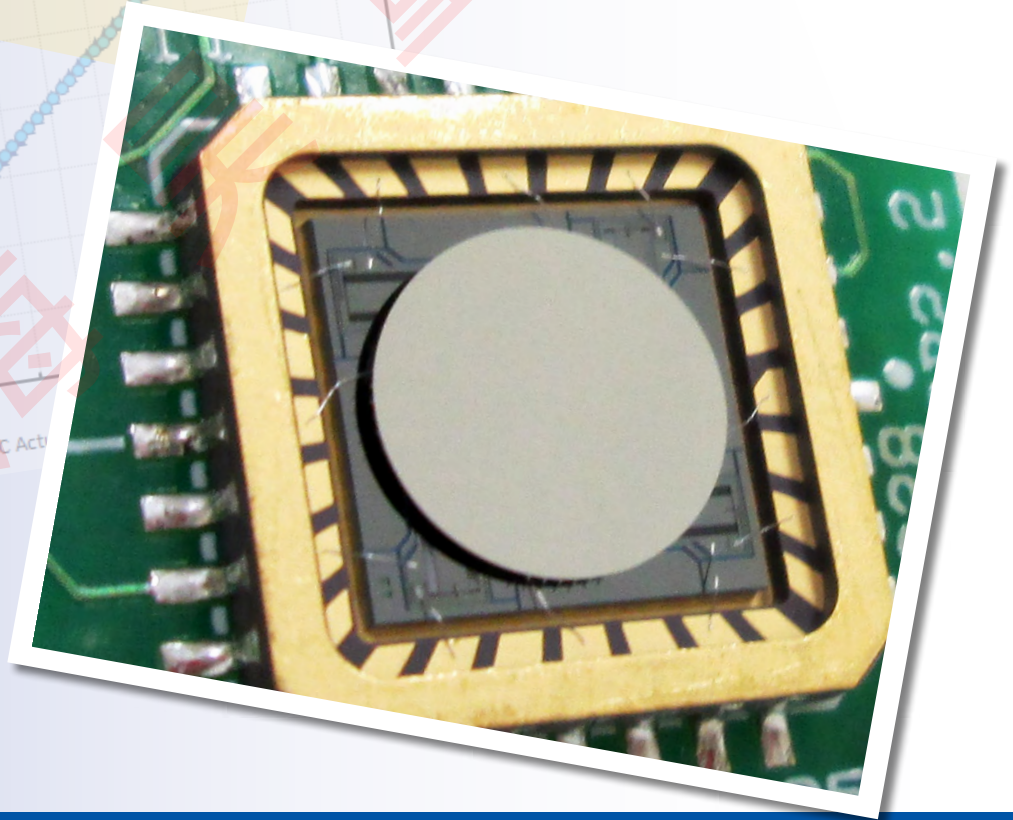
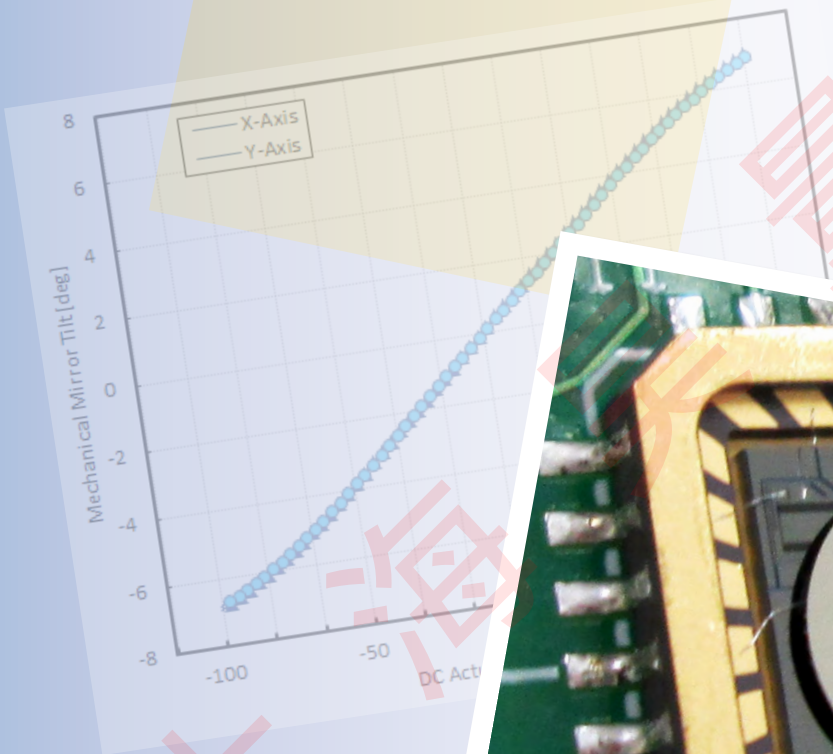


Gimbal-Less Two-Axis Scanning MEMS Micromirrors

Device Datasheet
S5727



Device Parameters Summary

Device ID : S5727

Actuator Name : A5L2.1

Actuator Type : 4-Quadrant (Two-Axis, Bidirectional)

Mirror Type and Size : Bonded mirror of 2.4mm diameter

Mirror Coating : Aluminum

Maximum Angle - X Axis [degrees] : 0.9717

Maximum Angle - Y Axis [degrees] : 0.9780

Maximum Voltage - X Axis [V] : 159

Maximum Voltage - Y Axis [V] : 159

Bias Voltage [V] : 80

Maximum Angle - Coupled Axes [degrees] : 1.1478

Resonant Frequency - X Axis [Hz] : 3618

Resonant Frequency - Y Axis [Hz] : 3604

Quality Factor- X Axis : 74

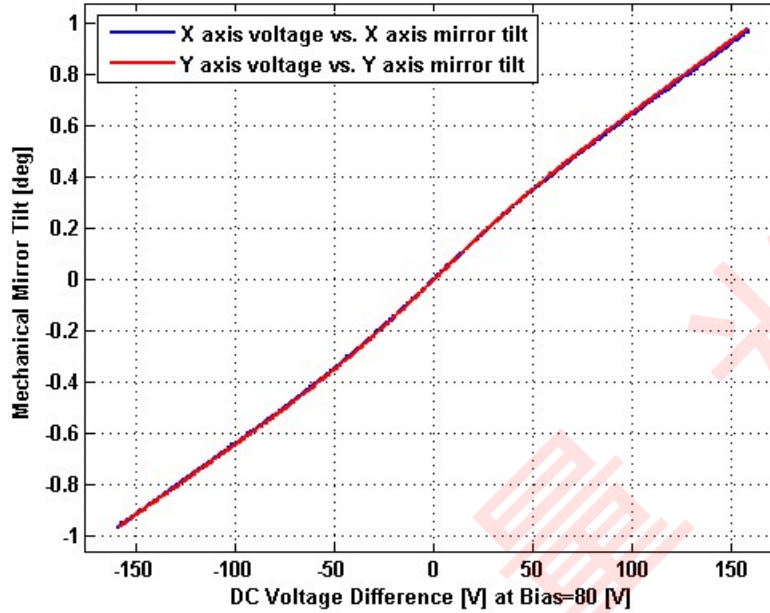
Quality Factor - Y Axis : 71

Recommended LPF Cutoff Frequency (6th Order Bessel) : 1400

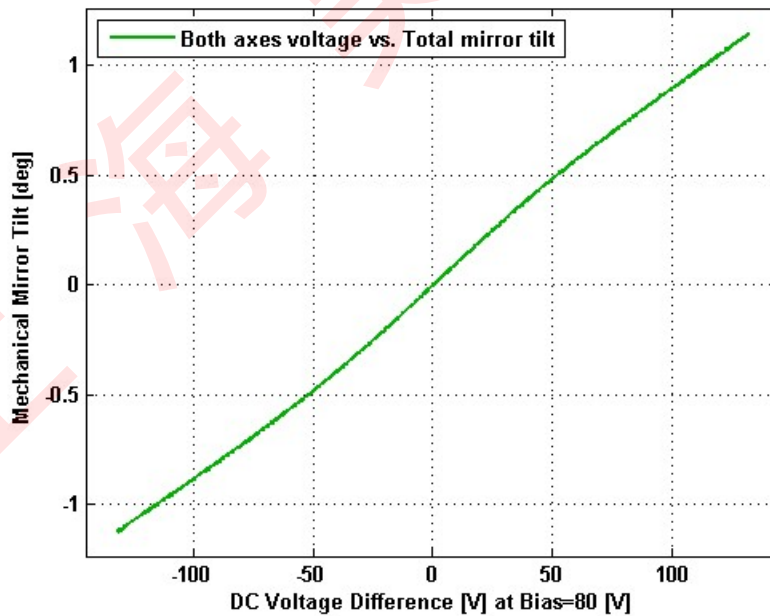
Date and Time Report was Created: 29-Jun-2016 at 17:53:31

Static Response

Voltage vs. Angle - Individual Axes

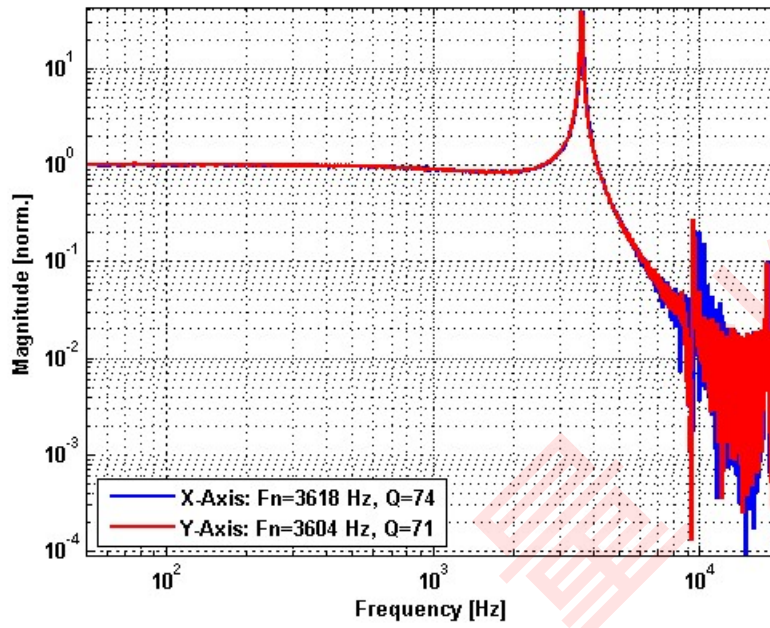


Voltage vs. Angle - Coupled Axes

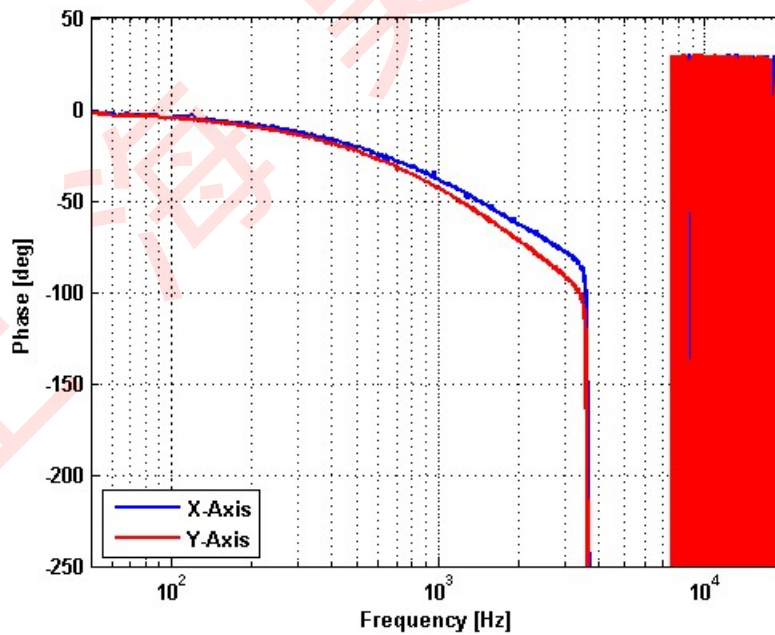


Frequency Response

Small Signal Frequency Response - Magnitude

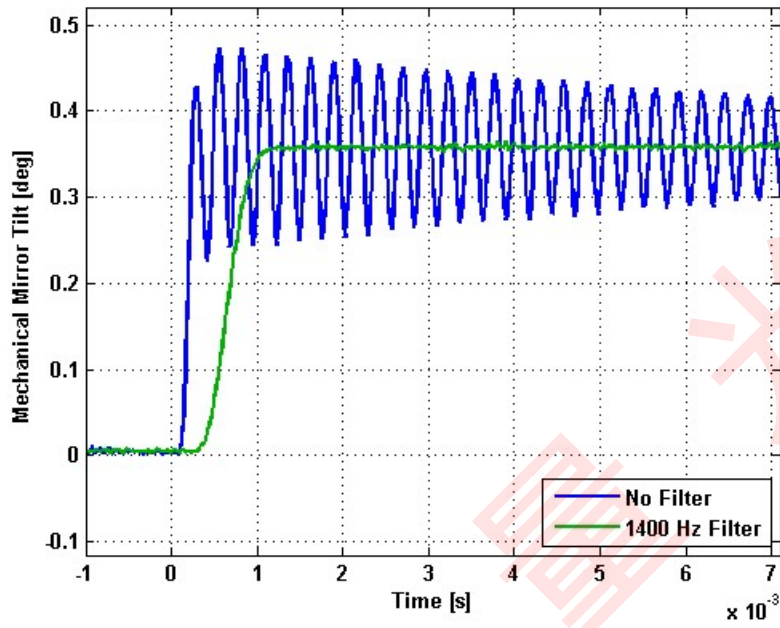


Small Signal Frequency Response - Phase

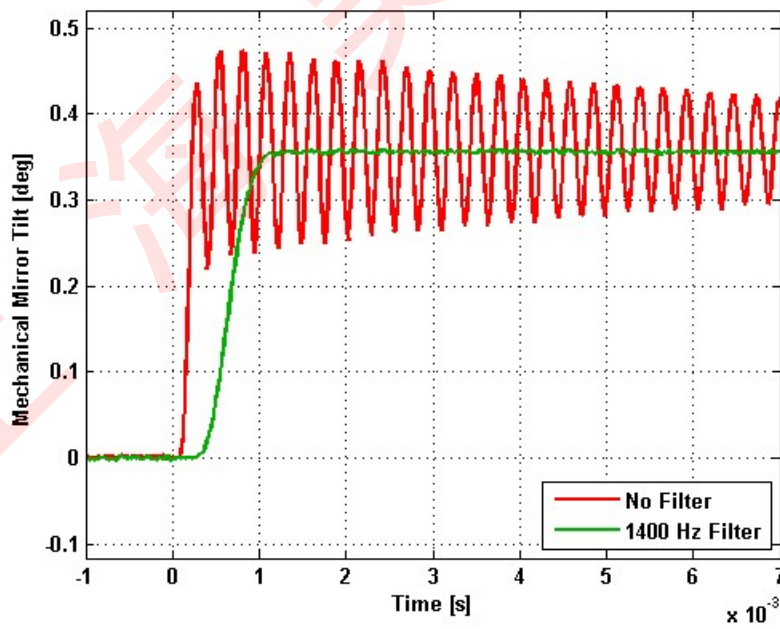


Step Response

X-Axis Step Response

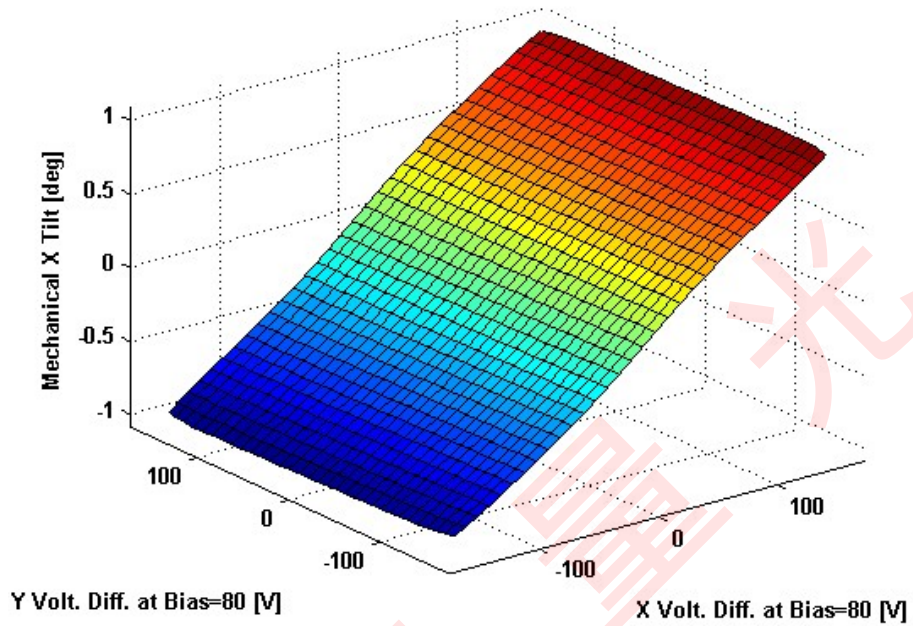


Y-Axis Step Response

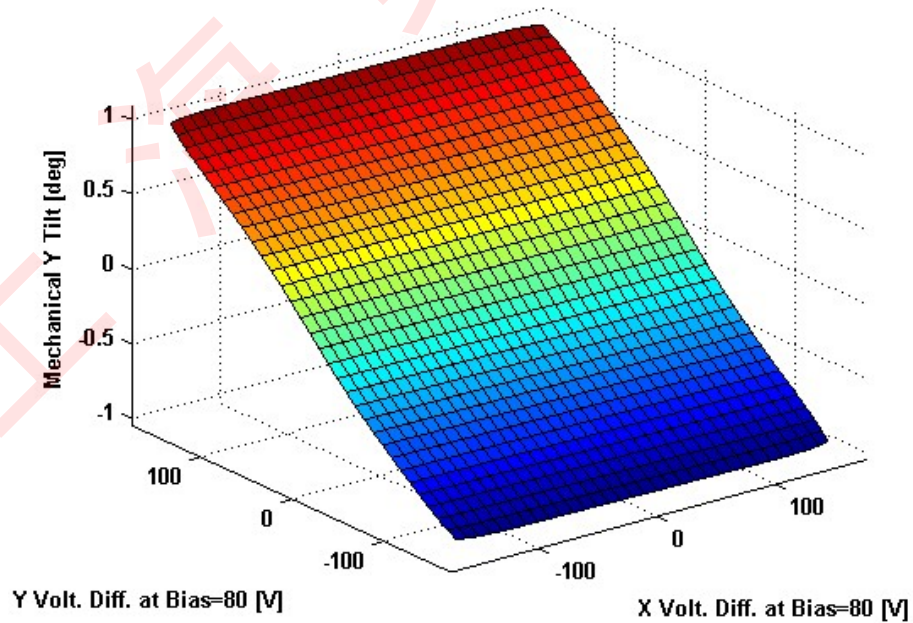


2D Lookup Tables

Voltage vs. X Angle - Lookup Table



Voltage vs. Y Angle - Lookup Table



Y Angle vs. X Angle - Addressable Angles

