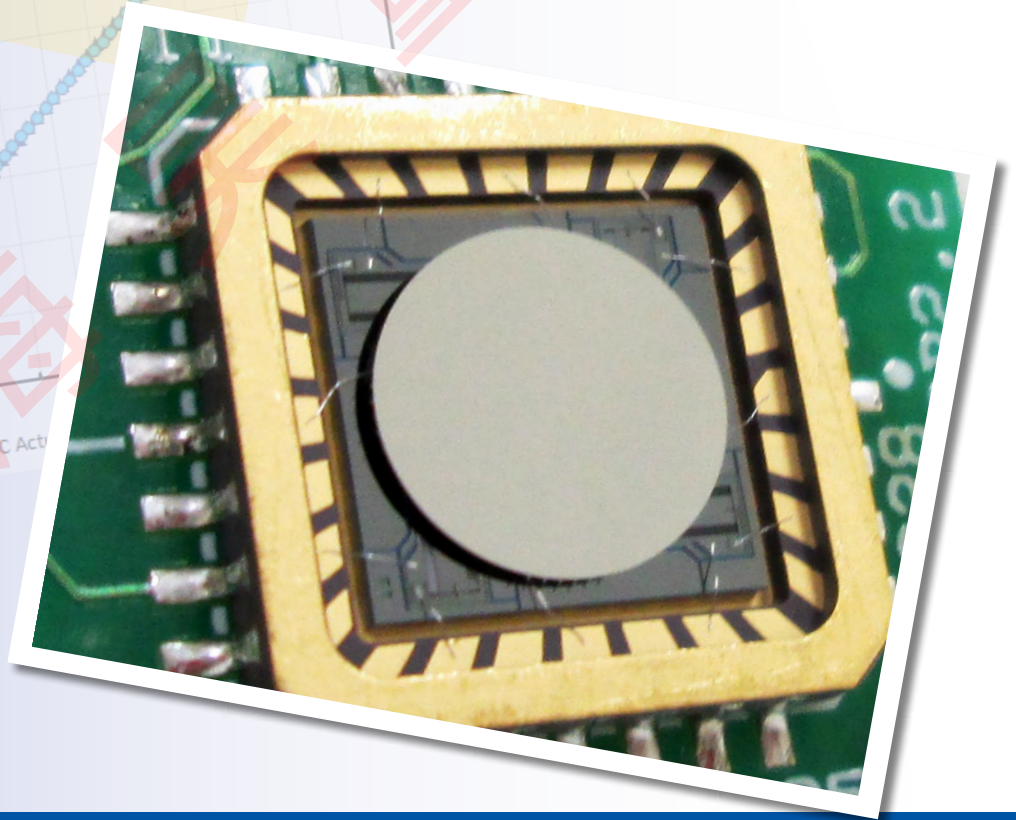
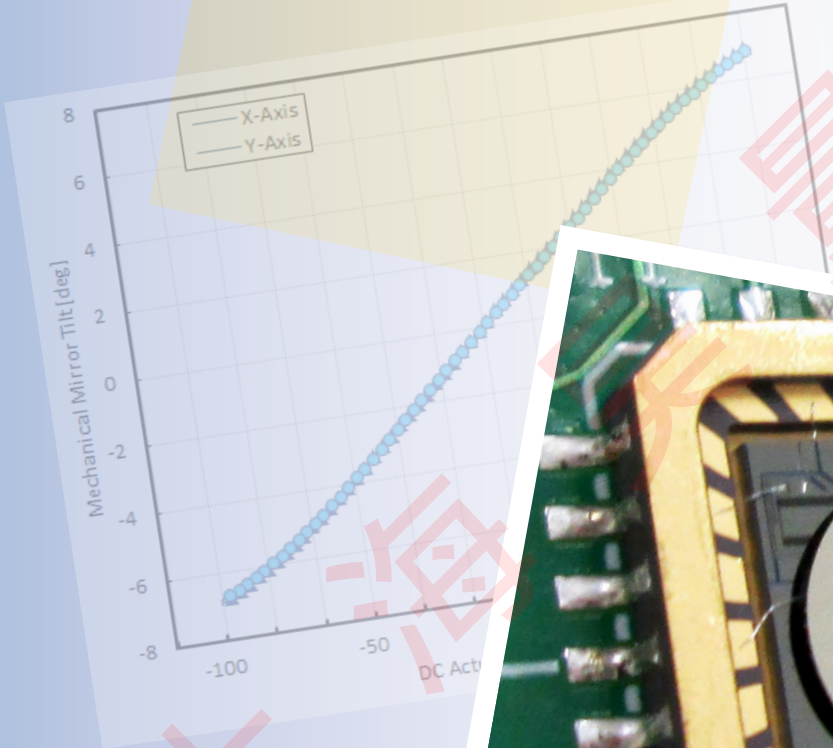


Gimbal-Less Two-Axis Scanning MEMS Micromirrors

Device Datasheet
S40070



Device Parameters Summary

Device ID : S40070

Actuator Name: A5L2.1

Actuator Mode : Gimbal-less Dual-Axis Quasistatic

Mirror Type: Bonded

Mirror Size : 6.4mm diameter

Mirror Coating : Aluminum

Maximum Mech. Angle - X Axis [degrees] : 1.0455

Maximum Mech. Angle - Y Axis [degrees] : 1.0468

Maximum Vdifference - X Axis [V] : 157

Maximum Vdifference - Y Axis [V] : 156

Driver Bias Voltage (Vbias) [V] : 80

Maximum Mech. Angle - Coupled Axes [degrees] : 1.4850

Resonant Frequency - X Axis [Hz] : 743

Resonant Frequency - Y Axis [Hz] : 747

Quality Factor - X Axis : 49.6000

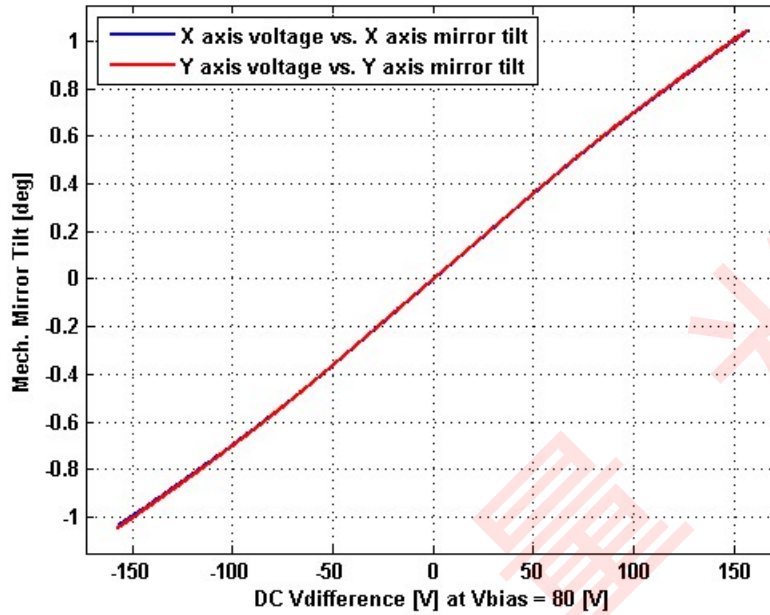
Quality Factor - Y Axis : 44.2000

Recommended LPF Cutoff Frequency (6th Order Bessel) [Hz] : 300

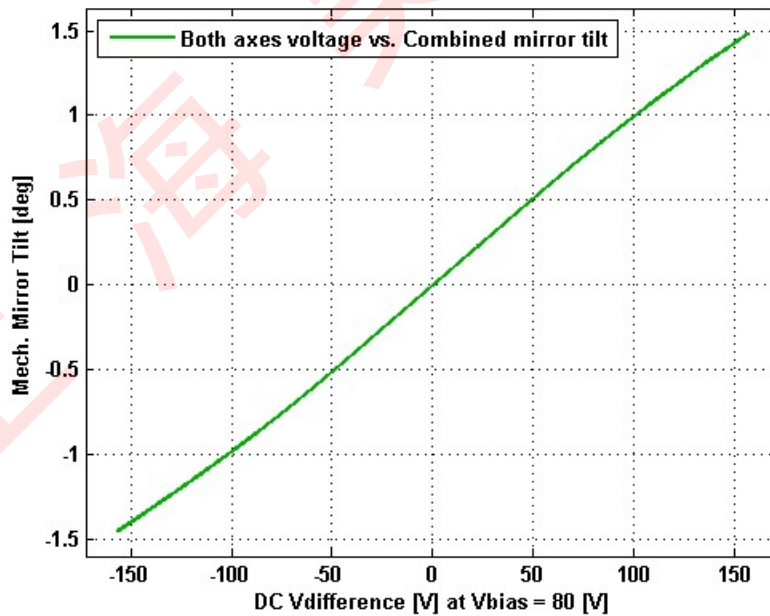
Date and Time Report was Created: 21-Nov-2017 at 12:52:28

Static Response

Voltage vs. Mech. Angle - Individual Axes

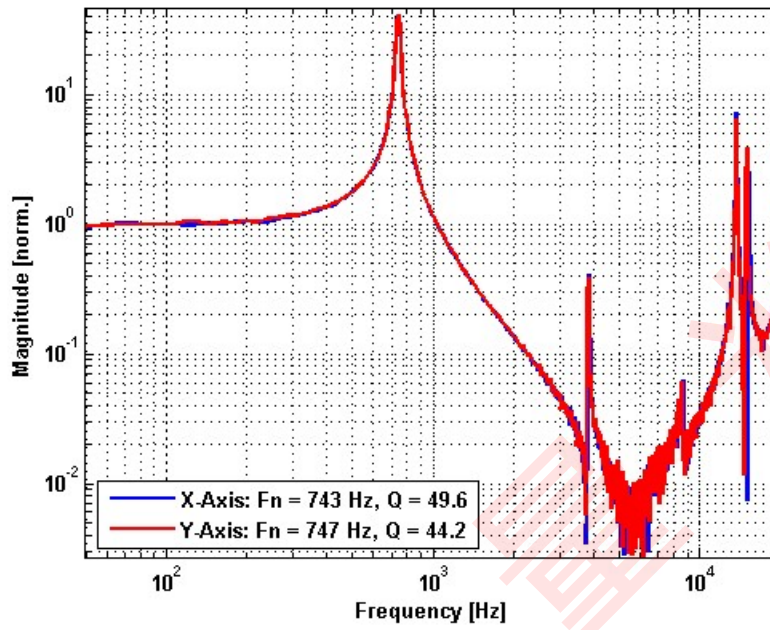


Voltage vs. Mech. Angle - Coupled Axes

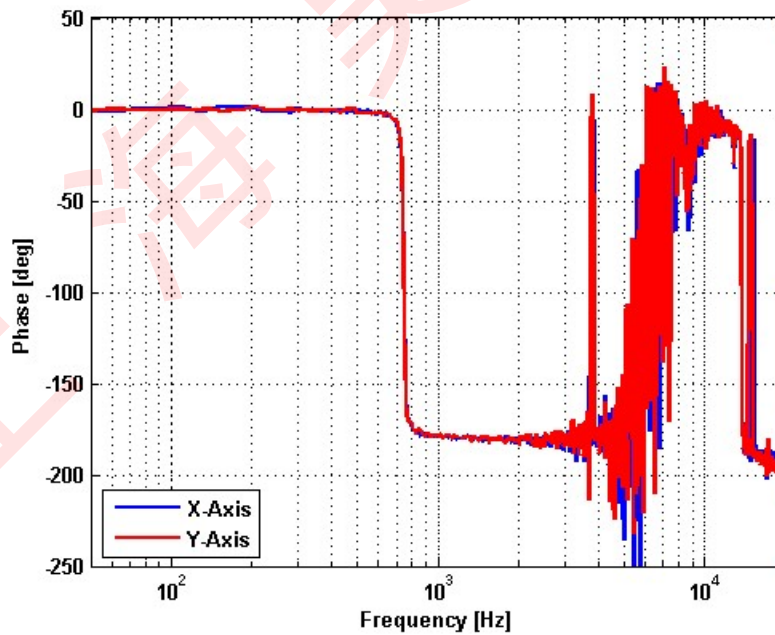


Frequency Response

Small Signal Frequency Response - Magnitude

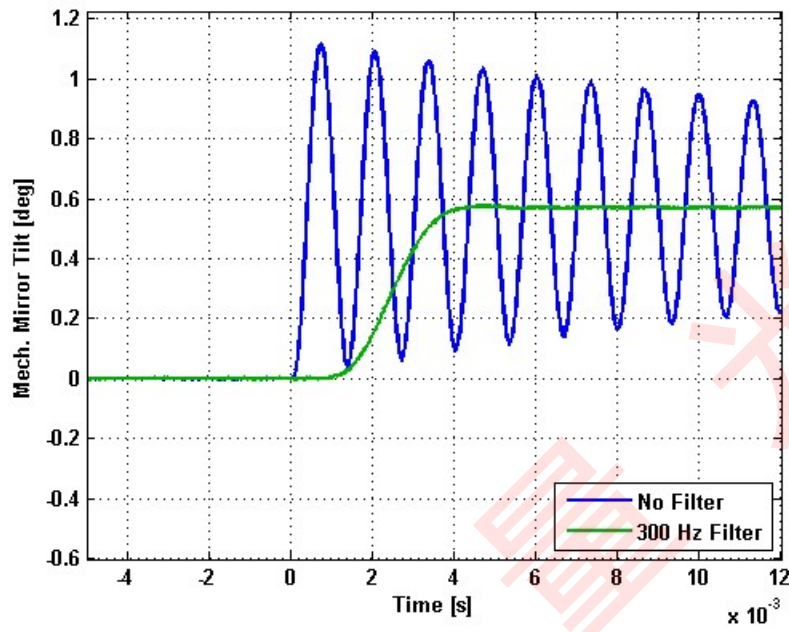


Small Signal Frequency Response - Phase

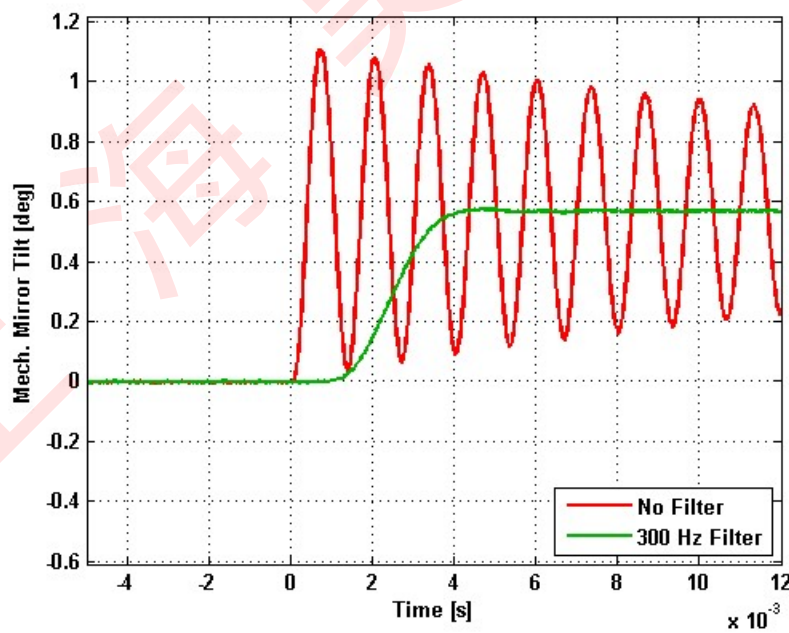


Step Response

X-Axis Step Response

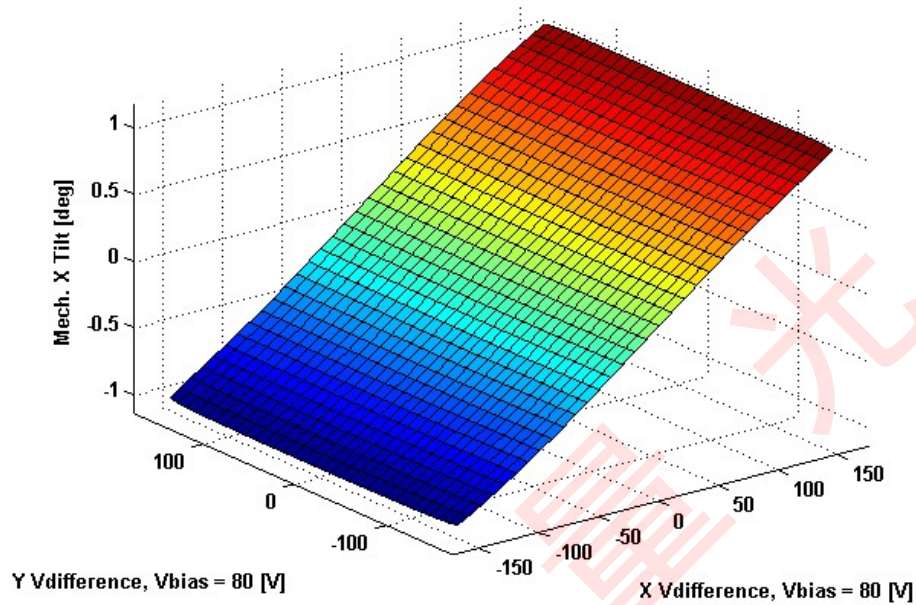


Y-Axis Step Response

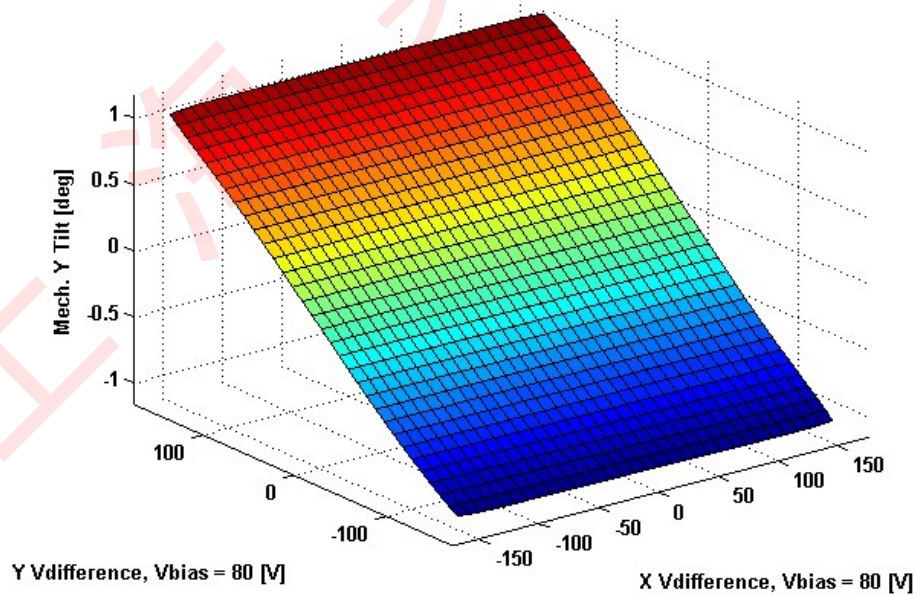


2D Lookup Tables

Voltage vs. X Mech. Angle - Lookup Table



Voltage vs. Y Mech. Angle - Lookup Table



Y vs. X Tilt - Addressable Mech. Angles

