



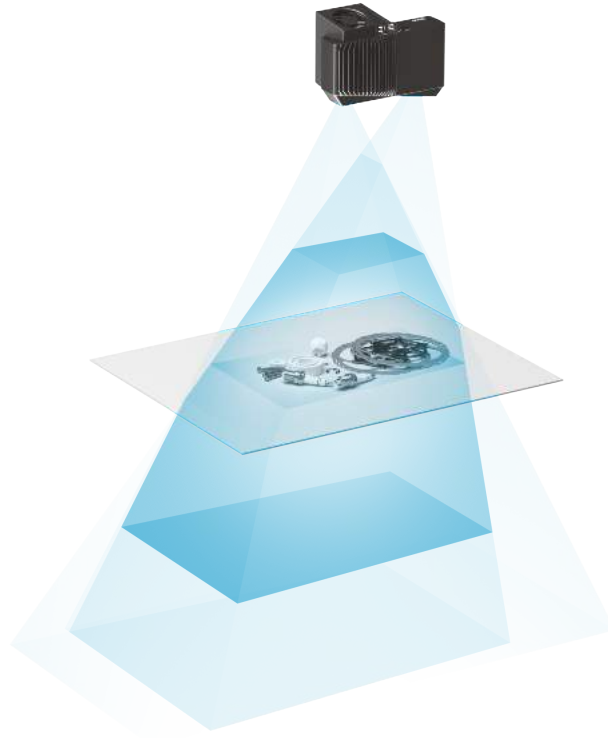
Zivid One+

The world's most accurate 3D color camera

zivid.com

Zivid One+ Small

For highly detailed, tiny objects at close range



Optimal Range

0.3 - 0.8m



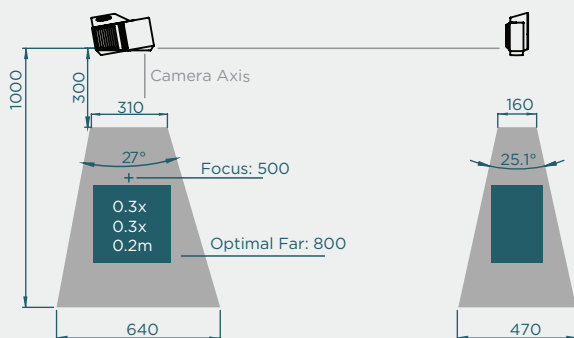
**Precision/
z-noise**

0.03mm @ 0.3m
<0.2mm @ 1.0m



Maximum Range

1.0m

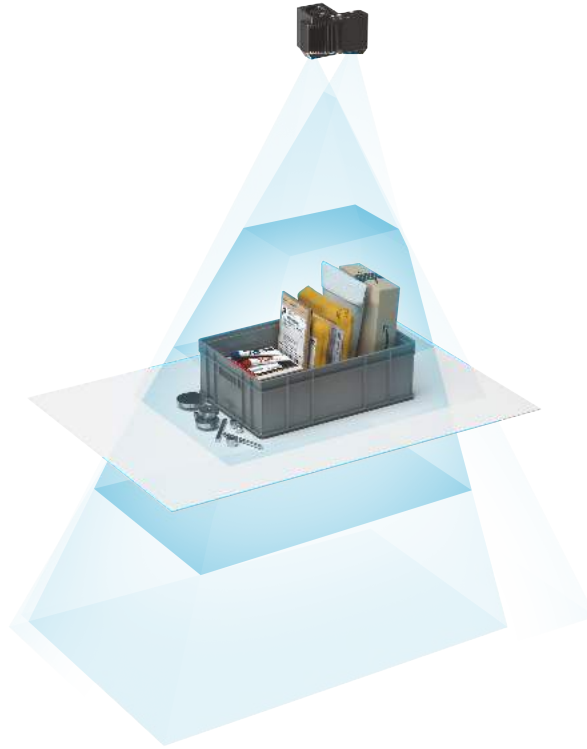


Small

- Objects on tables, in trays or boxes
- Picking, inspection and verification applications

Zivid One+ Medium

For small to medium objects, versatile range



Optimal Range

0.6 - 1.6m



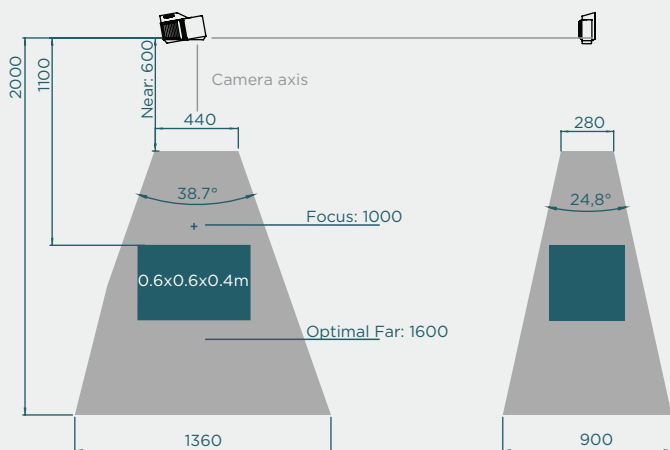
**Precision/
z-noise**

0.07mm @ 0.6m
<1.0mm @ 2.0m



Maximum Range

2.0m

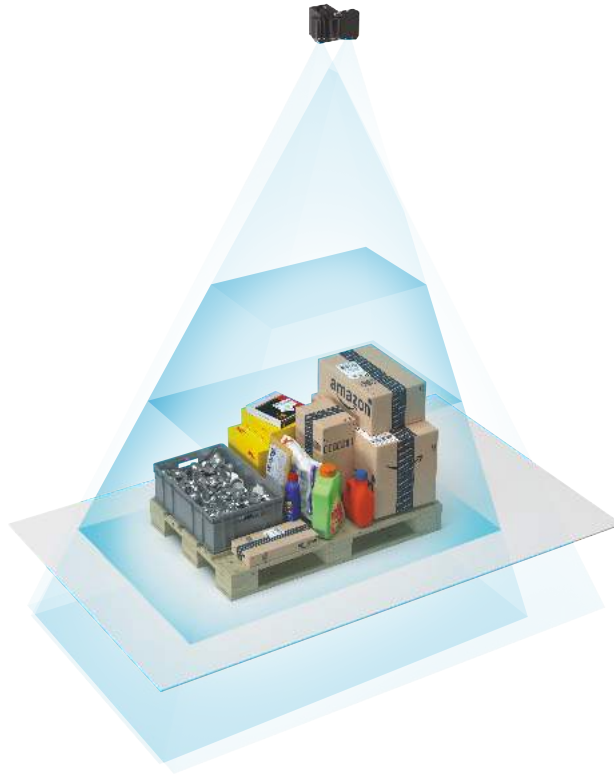


Medium

- Objects on tables, in standard totes or bins
- Picking, assembly, and control applications

Zivid One+ Large

For medium to large objects at longer ranges



Optimal Range

1.2 - 2.6m



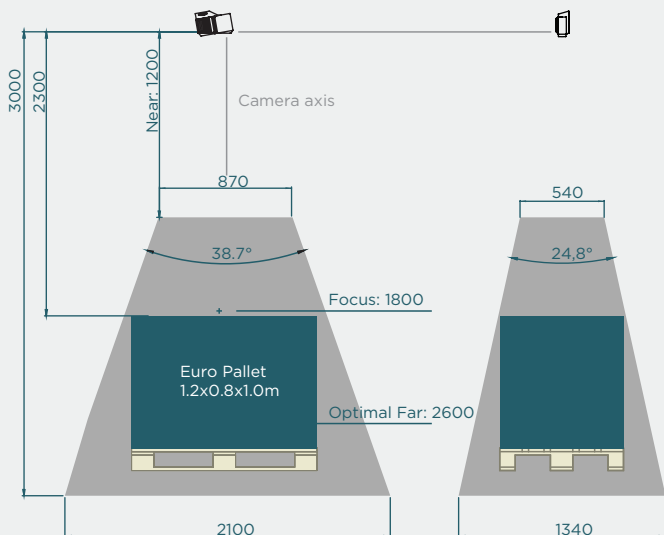
**Precision/
z-noise**

0.3mm @ 1.2m
<2.0mm @ 3.0m



Maximum Range

3.0m



Large

- Objects on floor or standard EU/US pallets
- Picking and handling, de-palletizing

3D Camera Specifications

Airtight and intelligent cooling



Active lighting for textureless objects



Full RGB 3D color camera



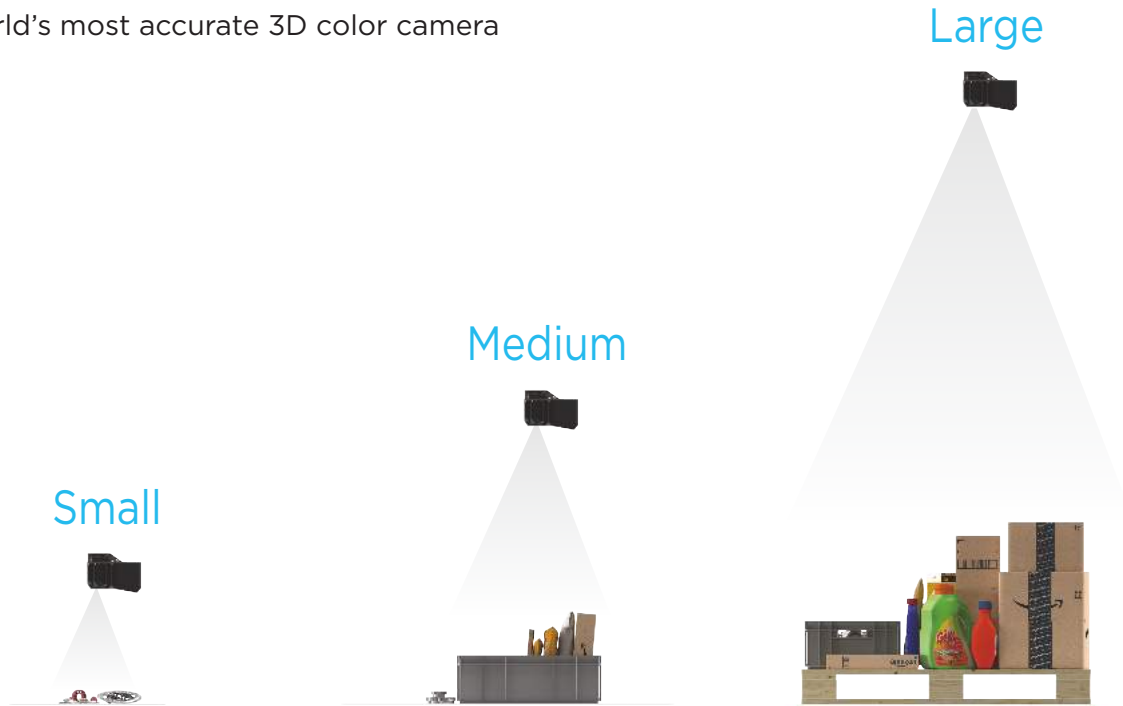
High Dynamic Range rapid electronic iris

| | Small | Medium | Large |
|---------------------------------|--|---------------------------------------|--|
| Optimal Range (m) | 0.3 - 0.8 | 0.6 - 1.6 | 1.2 - 2.6 |
| Maximum Range (m) | 1.0 | 2.0 | 3.0 |
| FOV (mm) | 170 x 140 @ 0.3m 650 x 480 @ 1.0m | 420 x 270 @ 0.6m 1370 x 900 @ 2.0m | 850 x 530 @ 1.2m 2110 x 1360 @ 3.0m |
| Spatial Resolution (mm) | 0.12 @ 0.3m 0.40 @ 1.0m | 0.23 @ 0.6m 0.75 @ 2.0m | 0.45 @ 1.2m 1.11 @ 3.0m |
| Precision / z-noise (mm) | 0.03 @ 0.3m <0.2 @ 1.0m | 0.07 @ 0.6m <1.0 @ 2.0m | 0.3 @ 1.2m <2.0 @ 3.0m |
| Acquisition Rate | 13 Hz (full resolution) | | |
| Output | 3D (XYZ) + Color (RGB) + Quality (Q) for each pixel | | |
| Image Size | 1920 x 1200 (2.3 Mpixel) | | |
| Imaging | Color, 3D HDR, Reflection and noise filters | | |
| Simplicity | Factory-calibrated 3D camera, easy and intuitive GUI Zivid Studio, Modern and high level API. | | |
| Software APIs | C++ / C# / .NET GeniCam/HALCON (RC) | | |
| OS | Windows 7 / 8 / 10 Ubuntu 16.04 / Ubuntu 18.04 | | |
| Physical Interface | USB3.0 (5m / 10m / 25m options) 24V DC | | |
| Dimensions and weight | 226 x 165 x 86 mm 2 kg | | |
| Environmental | 10-40°C / 5G Sinus / 25G Shock IP65 aluminum housing | | |
| Safety and EMC | CE / EN60950 / CB / FCC class A | | |

All product, product specifications and data are subject to change without notice to improve reliability, function or design or otherwise.

Zivid One⁺

The world's most accurate 3D color camera



3D IMAGING WITHOUT COMPROMISES

Excellent data quality in HD at speeds up to 13Hz with better than 100 μm precision. No compromise between speed and resolution.

HANDLES ANY MATERIAL

Captures high quality 3D images of even the most problematic industrial objects. Shiny metallic, black and absorbing or partly translucent.

FULL COLOR

Point cloud data (XYZ) and vivid RGB colors captured with the same sensor chip. One-to-one correspondence between color and depth.

EASE OF USE

Factory calibrated and easy and intuitive to use. Comes with smart and intuitive GUI, interfaces for machine vision software and a modern and high level API.

SUPPORTS YOUR WORKFLOW



Contact Zivid

Gjerdrums vei 10A
N-0484 Oslo
Norway

sales@zivid.com

Order Zivid One 3D cameras

www.zivid.com/order