



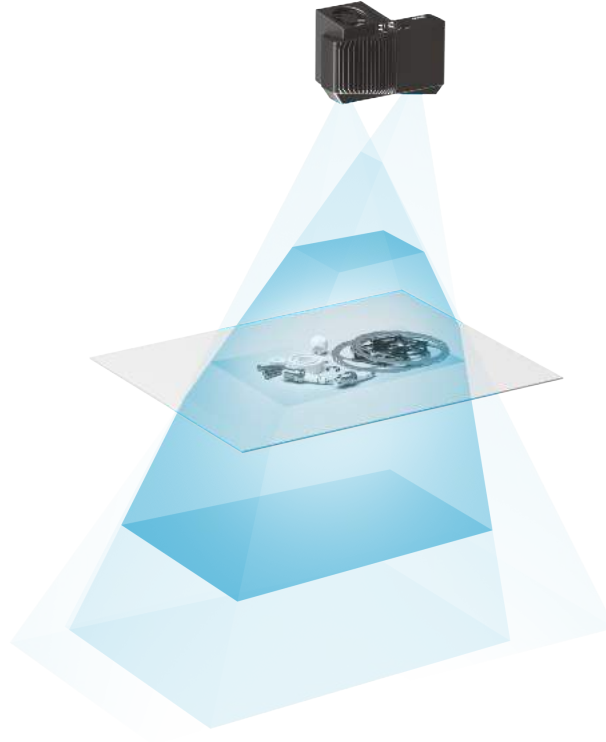
Zivid One+

The world's most accurate 3D color camera

<http://www.auniontech.com>

Zivid One+ Small

For highly detailed, tiny objects at close range



**Optimal
Range**

0.3 - 0.8m



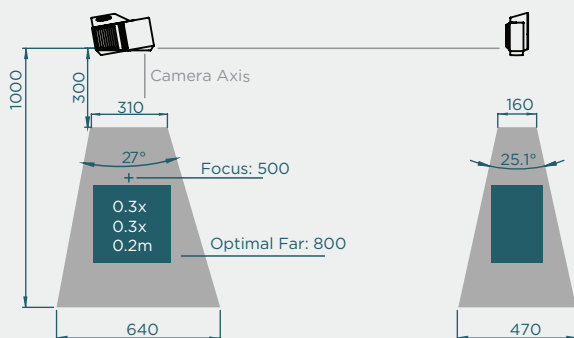
**Precision/
z-noise**

0.03mm @ 0.3m
<0.2mm @ 1.0m



**Maximum
Range**

1.0m

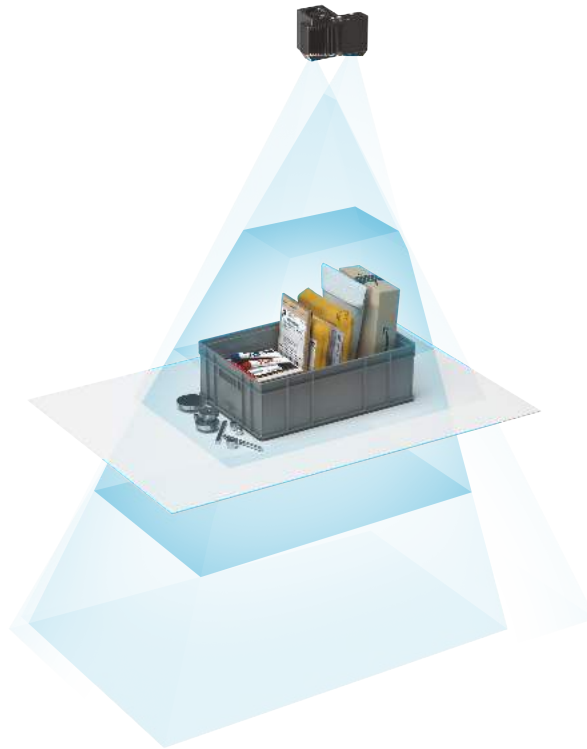


Small

- Objects on tables, in trays or boxes
- Picking, inspection and verification applications

Zivid One+ Medium

For small to medium objects, versatile range



Optimal Range

0.6 - 1.6m



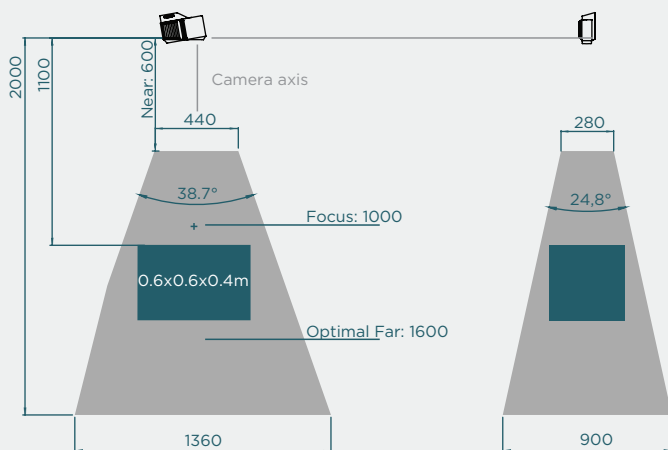
**Precision/
z-noise**

0.07mm @ 0.6m
<1.0mm @ 2.0m



Maximum Range

2.0m



Medium

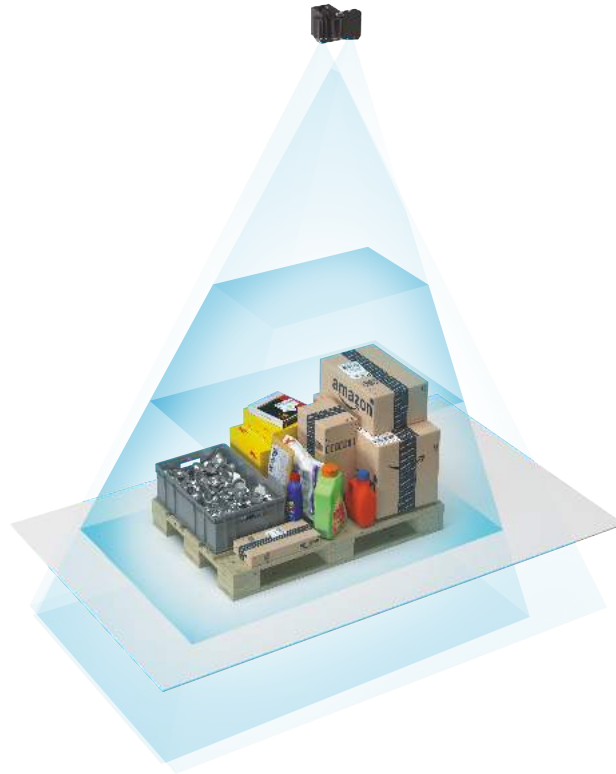
- Objects on tables, in standard totes or bins
- Picking, assembly, and control applications



<http://www.auniontech.com>

Zivid One+ Large

For medium to large objects at longer ranges



Optimal Range

1.2 - 2.6m



**Precision/
z-noise**

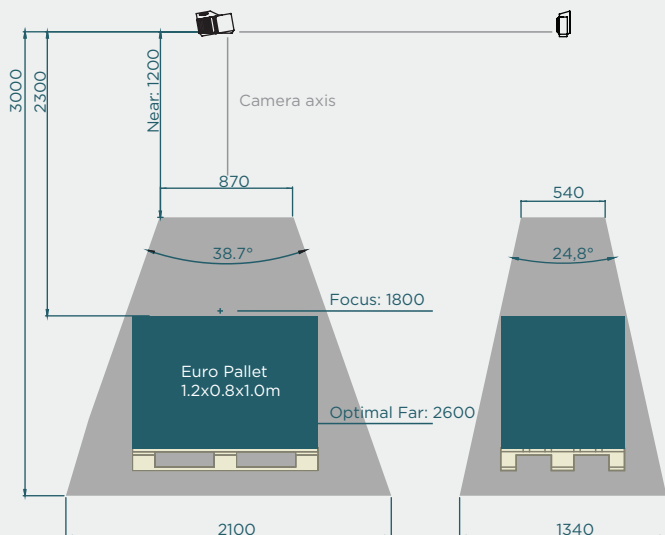
0.3mm @ 1.2m
<2.0mm @ 3.0m



Maximum Range

3.0m

<http://www.auniontech.com>



Large

- Objects on floor or standard EU/US pallets
- Picking and handling, de-palletizing



<http://www.auniontech.com>

3D Camera Specifications

Airtight and intelligent cooling



Active lighting for textureless objects



Full RGB 3D color camera



High Dynamic Range rapid electronic iris

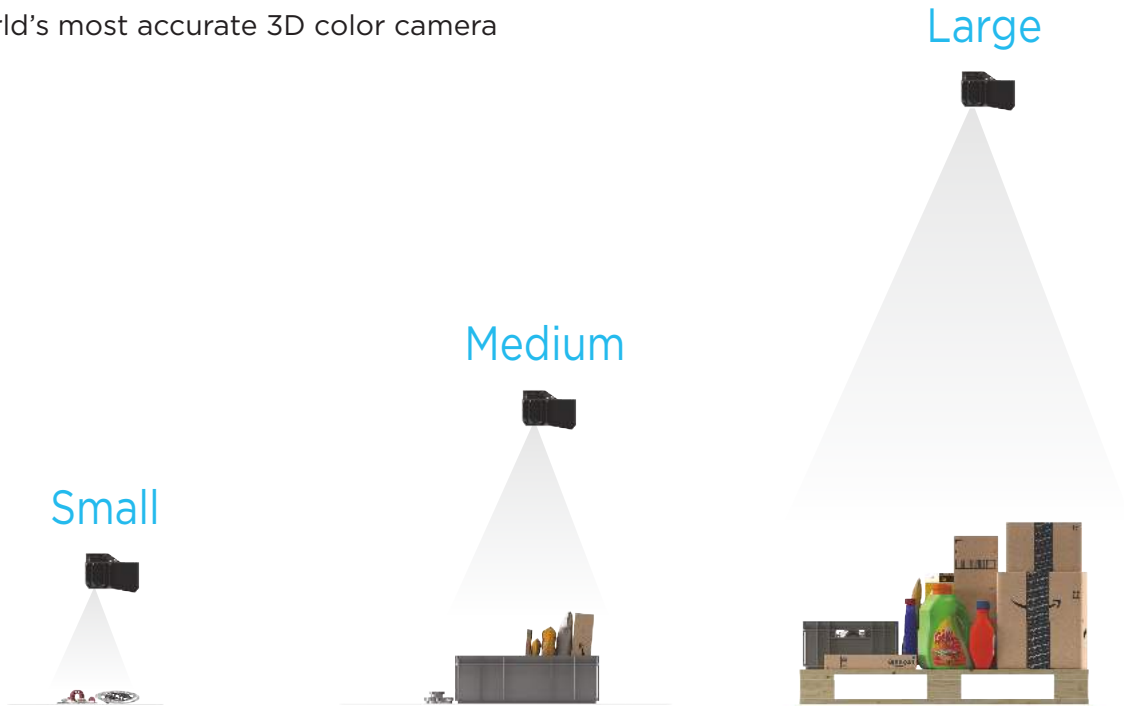
	Small	Medium	Large
Optimal Range (m)	0.3 - 0.8	0.6 - 1.6	1.2 - 2.6
Maximum Range (m)	1.0	2.0	3.0
FOV (mm)	170 x 140 @ 0.3m 650 x 480 @ 1.0m	420 x 270 @ 0.6m 1370 x 900 @ 2.0m	850 x 530 @ 1.2m 2110 x 1360 @ 3.0m
Spatial Resolution (mm)	0.12 @ 0.3m 0.40 @ 1.0m	0.23 @ 0.6m 0.75 @ 2.0m	0.45 @ 1.2m 1.11 @ 3.0m
Precision / z-noise (mm)	0.03 @ 0.3m <0.2 @ 1.0m	0.07 @ 0.6m <1.0 @ 2.0m	0.3 @ 1.2m <2.0 @ 3.0m
Acquisition Rate	13 Hz (full resolution)		
Output	3D (XYZ) + Color (RGB) + Quality (Q) for each pixel		
Image Size	1920 x 1200 (2.3 Mpixel)		
Imaging	Color, 3D HDR, Reflection and noise filters		
Simplicity	Factory-calibrated 3D camera, easy and intuitive GUI Zivid Studio, Modern and high level API.		
Software APIs	C++ / C# / .NET GeniCam/HALCON (RC)		
OS	Windows 7 / 8 / 10 Ubuntu 16.04 / Ubuntu 18.04		
Physical Interface	USB3.0 (5m / 10m / 25m options) 24V DC		
Dimensions and weight	226 x 165 x 86 mm 2 kg		
Environmental	10-40°C / 5G Sinus / 25G Shock IP65 aluminum housing		
Safety and EMC	CE / EN60950 / CB / FCC class A		

All product, product specifications and data are subject to change without notice to improve reliability, function or design or otherwise.



Zivid One+

The world's most accurate 3D color camera



3D IMAGING WITHOUT COMPROMISES

Excellent data quality in HD at speeds up to 13Hz with better than 100 μm precision. No compromise between speed and resolution.

HANDLES ANY MATERIAL

Captures high quality 3D images of even the most problematic industrial objects. Shiny metallic, black and absorbing or partly translucent.

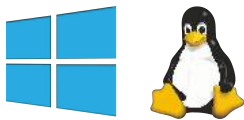
FULL COLOR

Point cloud data (XYZ) and vivid RGB colors captured with the same sensor chip. One-to-one correspondence between color and depth.

EASE OF USE

Factory calibrated and easy and intuitive to use. Comes with smart and intuitive GUI, interfaces for machine vision software and a modern and high level API.

SUPPORTS YOUR WORKFLOW



联系我们

Tel: +86-021-51083793

Fax: +86-021-34241962

E-Mail:

info@auniontech.com

客服微信: Auniontech