



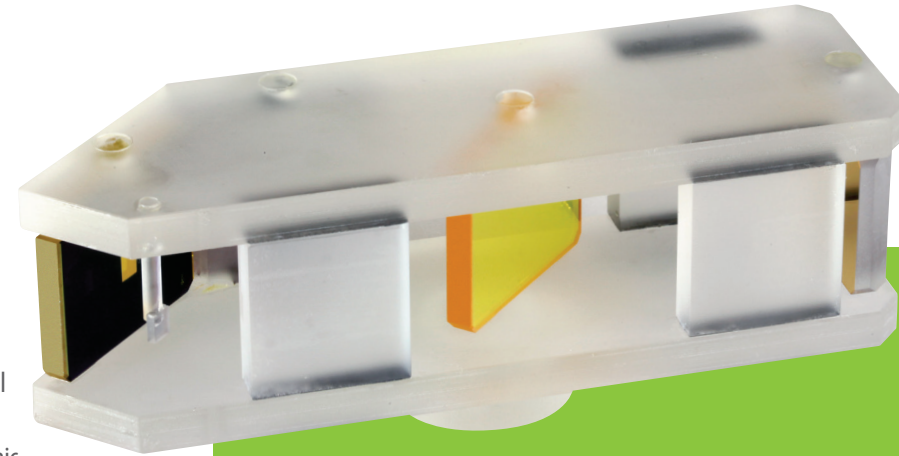
THE M.O.S.T.[™] ADVANTAGE

- Combines all of the elements of a complex optical setup into a single monolithic unit.
- Superb optical stability, unsurpassed shock and vibration resistance.
- Sub-arc second accuracy between optical elements.
- Integrates different glass types and exotic materials such as KBr, ZnSe and CaF₂, into one assembly.
- Especially useful when the system has to perform in broadband light applications, such as FTIR.
- Permanently aligned so you will never need to adjust it and also lasts indefinitely.
- Use in interferometer configurations, laser cavities, beam dividers, beam delivery systems, Boresighting and more.

Getting the M.O.S.T.[™] out of your OPTICAL APPLICATIONS

PLX provides unique optical instruments, technologies and solutions to problems of achieving and maintaining state-of-the-art optical accuracy and stability under severe environmental conditions. Our Monolithic Optical Structure Technology (M.O.S.T.[™]) integrates complex optical elements into compact monolithic structures to achieve these objectives.

You'll find PLX instruments in Military, Space/Aerospace, and Commercial/Industrial applications as well as University Research and Science Labs around the world.

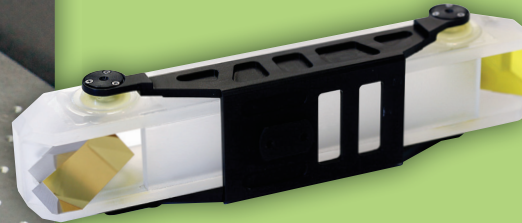
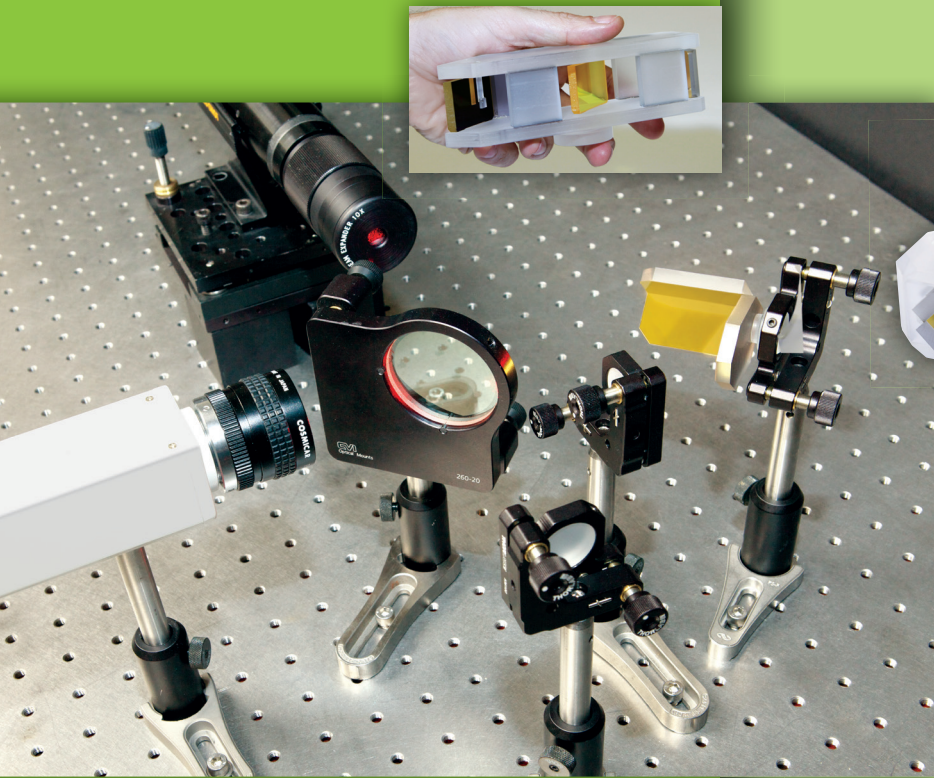


M.O.S.T.[™] MONOLITHIC OPTICAL STRUCTURE TECHNOLOGY

**A unique optical innovation
that can simplify and reduce the
size of your optical assemblies
and systems while increasing
robustness and reliability.**



上海昊量光电设备有限公司
官网: www.auniontech.com
电话: 021-34241961
邮箱: info@auniontech.com



PLX has used M.O.S.T.™ to manufacture optical structures incorporating from 2 to 5 optical elements, with typical clear apertures of 0.5" to 5" diameter. Larger or smaller clear apertures are also possible.

PLX manufactures the majority of its M.O.S.T.™ units utilizing flat elements, but can also incorporate non-flat surfaces if output results are well defined. In fact, PLX can customize a M.O.S.T.™ structure to incorporate virtually any special feature or

configuration you require and can improve practically any lab setup you need to convert to an instrument.

All products can be modified to operate under unique and severe environmental conditions.

M.O.S.T. PROPERTIES

FEATURES	SPECIFICATIONS
Glass Types Used	Typically fused Silica (SiO ₂), low-expansion Borosilicate, ULE 7971, BK7 and ceramics
Lightweight Structure	Average glass density is 2.2 g/cm ³ (lighter than Aluminum)
Average Specific Stiffness	3.3x10 ⁴ N m/g (higher than Aluminum)
Uniform CTE	Coefficient of Thermal Expansion using fused Silica is 0.55 ppm/K
Thermal Dependency	≤ 0.15% per degree
Oscillation Capability	≥ 1 KHz dependent upon the design and requirements

M.O.S.T.™ transforms complicated optical set-ups into COMPACT MONLITHIC STRUCTURES.

Incorporating M.O.S.T.™ into your design provides a wealth of benefits. Engineers save significant time initially when integrating M.O.S.T.™ into a system, since it is a solid pre-aligned block. In addition, the long-term maintenance savings are enormous. Because we've permanently aligned this extremely stable assembly, you will never need to adjust it!

SUPERIOR to MECHANICAL MOUNTS

Traditional mechanical mounts are inherently unstable and require constant adjustment – a true disadvantage in critical applications requiring the permanent and stable fixed positioning of optical elements.

SOME SAMPLE APPLICATIONS:



Beam Separator. Separates one input beam with multiple wavelengths into 3 different outputs for metrology applications.



Monolithic scanning device. Designed to oscillate at a rate higher than 1KHz, while maintaining its stability and accuracy, this lightweight structure is balanced to reduce the moment of inertia about the pin axes.



PLX Interferometer. Based on our M.O.S.T. proprietary technology, it is especially useful when the system has to perform in broadband light applications, such as FTIR. This sandwich like structure assembly exhibits exceptional thermal and mechanical stability and lasts indefinitely.