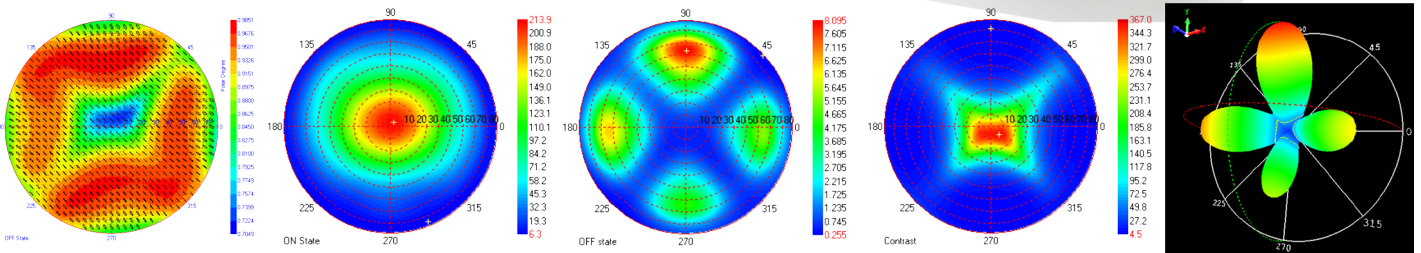


EZContrast



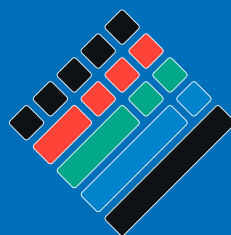
FEATURES

- Non contact viewing angle measurement
- High color accuracy
- Resolution: 0.04°/CCD pixel
- Cooled sensor

APPLICATIONS

- Viewing angle analysis for QC or R&D
- Viewing angle polarization as add-on
- Large spot size for W series (6mm)

EZContrast Series allows to measure viewing angle luminance and color data. This system can make accurate color measurement for any type of stimulus. ELDIM is manufacturing on its own all the key components of its system, including the optics thanks to advanced technologies.



ELDIM

OPTICAL METROLOGY FOR DISPLAYS

Specifications		EZContrast			
		L80	L80W	XL88	XL88W
Field coverage	<i>Incident angle</i> <i>Azimuth angle</i>	0-80° 0-360°		0-88° 0-360°	
Measuring area	<i>Maximum diameter</i> <i>Minimum diameter</i>	2mm 100µm	6mm 300µm	2mm 100µm	6mm 500µm
Optimum distance	<i>Ensure light coming from same spot at any angle</i>	3.7mm	2.5mm	1mm	
Accuracy	<i>Luminance</i> <i>Chromaticity (x,y) RMS</i> <i>Stokes vector with band pass filter (option)</i>	±3% 0.002 ±3%	±3% 0.002 ±3%	±3% 0.002 ±3%	±3% 0.002 ±3%
Performances	<i>Peltier cooled grade I</i> <i>Angular resolution</i> <i>A/D converter</i> <i>Angular optical resolution</i>	Yes 0.08°/ccd pixel(*) 14-16 bits ±0.3°(*)	Yes 0.04°/ccd pixel(*) 14-16 bits ±0.2°(*)	Yes 0.09°/ccd pixel(*) 14-16 bits ±0.3°(*)	Yes 0.05°/ccd pixel(*) 14-16 bits ±0.2°(*)
Chromaticity	<i>Color Filters</i> <i>Additional Filters</i>	Yes Optionnal	Yes Not available	Yes Optionnal	Yes Optionnal
Measurement Modes	<i>Luminance</i> <i>Chromaticity</i> <i>Polarization (option)</i> <i>Radiance spectrum on axis (option)</i>	Yes Yes Yes,Auto Yes,Auto	Yes Yes No Yes,Auto	Yes Yes Yes,Auto Yes,Auto	Yes Yes No Yes,Auto
Luminance Range	<i>Minimum (cd/m2)</i> <i>Maximum with density (option)</i>	0.001 1 000 000	0.001 500 000	0.001 1 000 000	0.001 500 000
Short-term repeatability	<i>Luminance</i> <i>Chromaticity (x,y) RMS</i> <i>Stokes vector (option)</i>	±0.02% 0.001 ±0.5%	±0.02% 0.001 ±0.5%	±0.02% 0.001 ±0.5%	±0.02% 0.001 ±0.5%
Polarizing elements	<i>For polarization measurements</i>	3 pol , 2WVP Automated	Not available	3 pol , 2WVP Automated	Not available
Reflective options	<i>Collimated & diffused</i>	Available	Not available	Available	Not available
Spectro radiometer option	<i>Measurement on axis for self calibration</i>	Available	Available	Available	Available
Spot viewer	<i>For position adjustment</i>	Color CMOS camera, USB 2.0 interface			
condition	<i>Temperature range standard</i> <i>Temperature range (option)</i> <i>Humidity range (non condensing)</i>	0 to 30°C -40 to 80°C 0 to 85%	0 to 30°C -40 to 80°C 0 to 85%	0 to 30°C -40 to 80°C 0 to 85%	0 to 30°C -40 to 80°C 0 to 85%

(*) The system's resolution must be considered according to the effective optical resolution.

Specifications can be change without notice