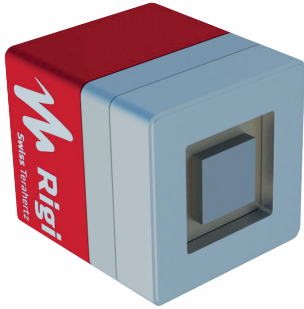
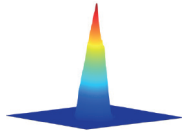




RIGI- L2 Camera



Uncooled real-time THz imager



- Beam profiling
- Non-destructive testing
- Imaging systems
- Quality control
- Security and surveillance
- Optical alignment

Image using QCL THz source

- **Frequency:** 4.6 THz
- **Power:** 0.6 μ W
- **Integration time:** 50 μ s
- **Acquisition:** Single shot

Compatible with most terahertz sources

1. Broadband terahertz sources

- Broadband plasma based source
- Organic crystal high power spectrometer
- Lithium Niobate crystal high power spectrometer
- ZnTe crystal based linear spectrometer
- Photoconductive switch oscillator based source
- Commercial time domain spectrometer

Item	General Specifications
Detector	Uncooled FPA THz micro-bolometer array
Pitch	15 μ m
Array size	1280 x 1024 pixels
Active area	19 x 15.4 mm
Operating frequency	0.1 - 20 THz
Pixel NEP	< 1.5 pW/ \sqrt Hz at 4.6 THz
Operating temperature	-40 $^{\circ}$ C to 65 $^{\circ}$ C
Software	Included and adaptable upon request

2. Narrowband terahertz sources

- QCL based source
- Solid state sources
- Crystal based DFG source
- CO₂-based DFG source

Aunion Tech Co.,Ltd

Add: Floor 3, F Building, No. 86 Caobao road, Shanghai 200235 P.R. China
 Tel: +86-21-51083793 Fax: +86-21-34241962
 E-Mail: info@auniontech.com Website: www.auniontech.com