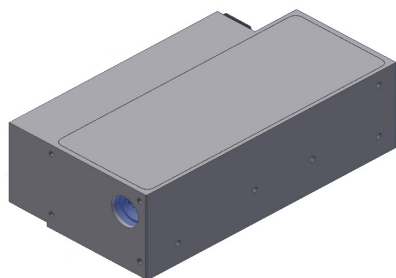


One – 100 μ J – 1030nm

Spec# 18102

Miniaturized Q-Switched DPSS Laser



FEATURES

- Miniaturized Design
- up to 100 μ J
- Q-Switched externally triggered laser
- up to 10 kHz
- 15 V DC Power Supply Input

Technical Specifications

Pulse Energy	up to 100	μ J
Q-Switch Repetition Rate	Fixed in the range 0 to 10 kHz (factory set)	
Wavelength	1030	nm
Pulse Width	10 to 20 (option < 5 ns)	ns
Pulse-to-pulse energy stability	St. Dev. < 2 %	
M ²	< 1.5	
Beam diameter @ 1/e ² (integrated BEX)	< 8 (option 3 mm)	mm
Electrical Requirements	DC Power Supply 15 V / < 5 A	
Cooling	Contact Cooled	
Dimensions	13 x 7 x 4 (complete unit including driver)	cm ³
Weight	< 1	kg

Options Available:

- Beam Expander, Red Aiming beam
- Photodiode for synchronization with external device
- Air Cooled Heat-sink

Applications:

- Portable LIDAR
- Instrumentation and measurement
- Remote sensing and pollution monitoring



网站: www.auniontech.com

电话: 15618011391 (吴工)

邮箱: ming-wu@ahuniontech.com