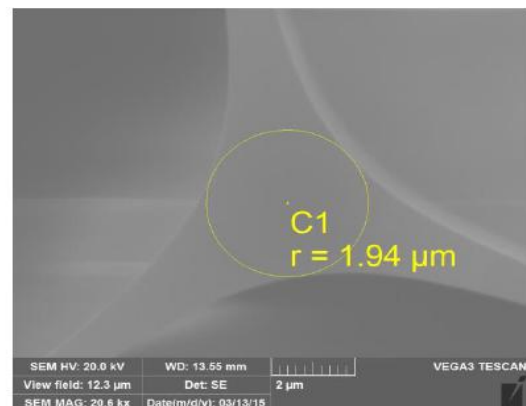
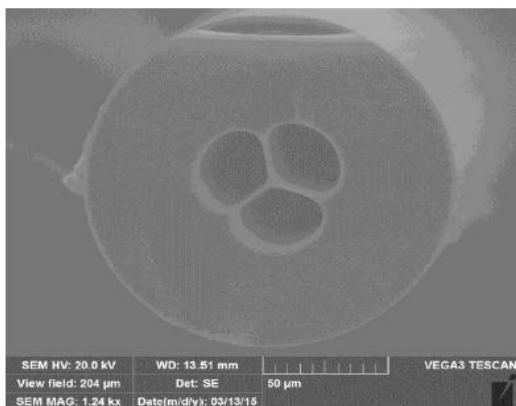


## SUSPENDED CORE PCF FIBER

### 悬芯光纤

在光子晶体光纤中，如果不断增大光子晶体光纤中的空气孔，其纤芯就会变得越来越孤立，最后整个纤芯会变成由几个细玻璃网所支撑的孤立玻璃丝结构，如下图所示，这种光纤具有较小的纤芯和大的空气孔，可应用于非线性

Product reference	P-SCPCF-XX-YYY
Cladding diameter ( $\mu\text{m}$ )	147 (+/- 1 $\mu\text{m}$ )
Core diameter ( $\mu\text{m}$ )	3.9 (+/-0.1 $\mu\text{m}$ )*
Core material	Silica F300
Mode Field Diameter @ 1550 nm	2 $\mu\text{m}$
Coating diameter ( $\mu\text{m}$ )	245 (+/-5 $\mu\text{m}$ )
Coating material ( $\mu\text{m}$ )	Dual coat acrylate
Background Loss (dB/km) @ 1310 nm	< 50
Web thickness (nm)	>150 nm
<b>Key features</b>	
Highly non linear, Pure silica core	
<b>Applications</b>	
Non linear phenomenons (supercontinuum generation), Fiber sensing	
*Other dimension available on request ( 1.4 to 4 $\mu\text{m}$ range)	



3rd Floor, F Building, Everbright Convention and Exhibition Center, No. 86 Caobao road, Shanghai  
200235 P.R. China

Tel: +86-21-51083793 E-Mail: [info@auniontech.com](mailto:info@auniontech.com)

Website: [www.auniontech.com](http://www.auniontech.com)