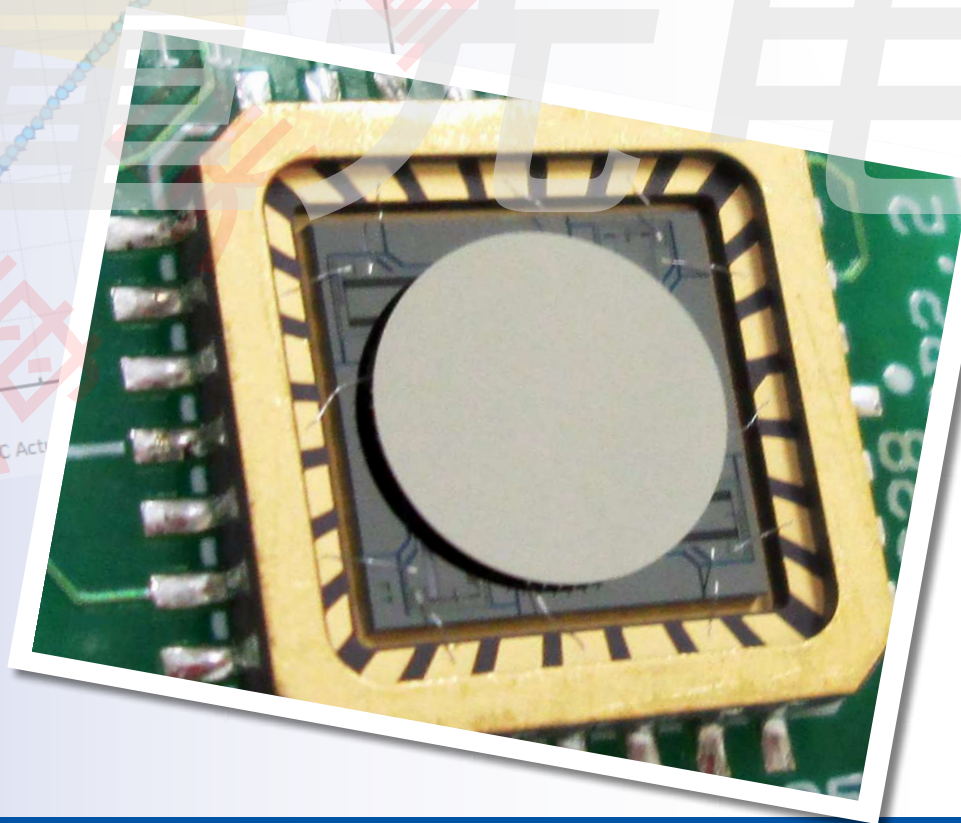
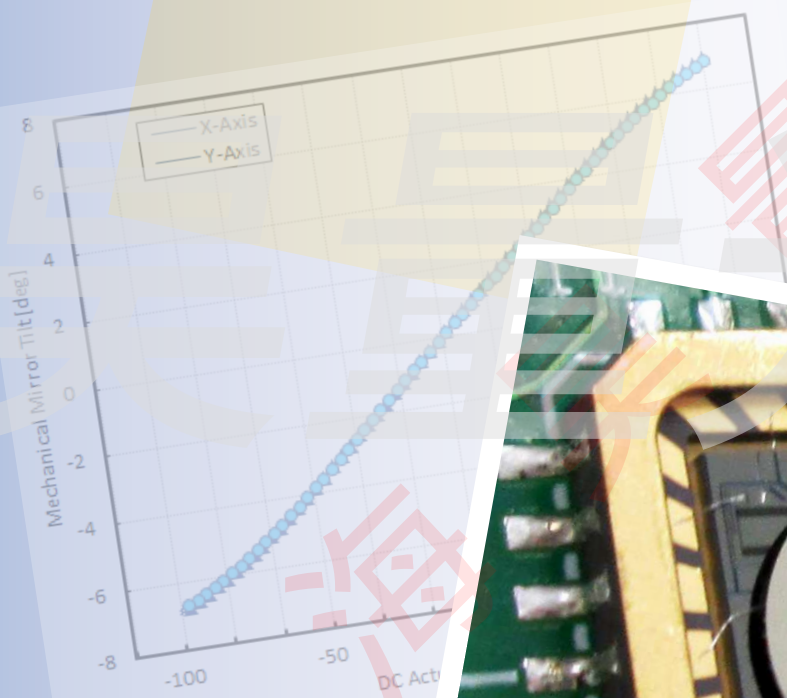


## Gimbal-Less Two-Axis Scanning MEMS Micromirrors

Device Datasheet  
S30159



[www.auniontech.com](http://www.auniontech.com)

---

# Device Parameters Summary

**Device ID :** S30159

**Actuator Type:** A7B1.1

**Actuator Mode :** Gimbal-less Dual-Axis Quasistatic

**Mirror Type and Size :** Bonded mirror of 3.0mm diameter

**Mirror Coating :** Aluminum

**Maximum Mech. Angle - X Axis [degrees] :** 7.1715

**Maximum Mech. Angle - Y Axis [degrees] :** 7.1827

**Maximum Vdifference - X Axis [V] :** 138

**Maximum Vdifference - Y Axis [V] :** 138

**Driver Bias Voltage (Vbias) [V] :** 80

**Maximum Mech. Angle - Coupled Axes [degrees] :** 9.2284

**Resonant Frequency - X Axis [Hz] :** 400

**Resonant Frequency - Y Axis [Hz] :** 405

**Quality Factor - X Axis :** 25

**Quality Factor - Y Axis :** 33

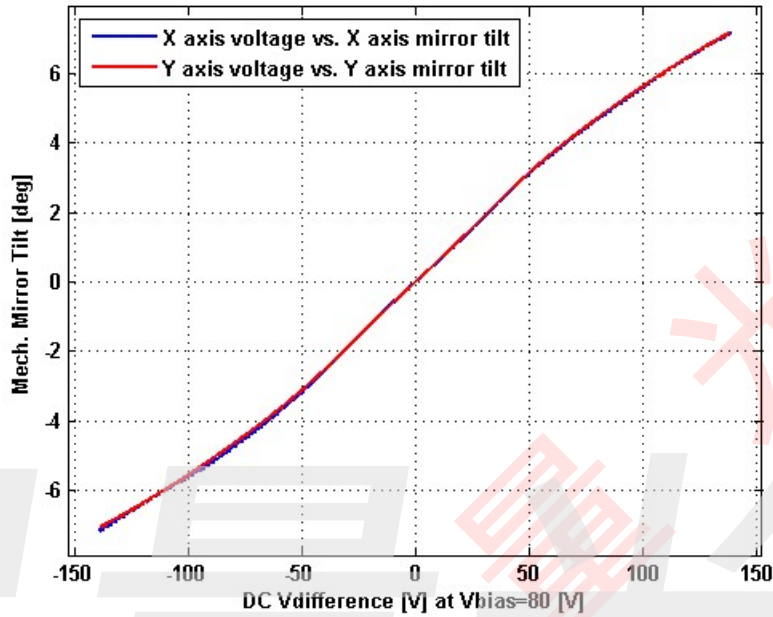
**Recommended LPF Cutoff Frequency (6th Order Bessel) [Hz] :** 160

**Date and Time Report was Created:** 11-Jan-2018 at 12:38:33

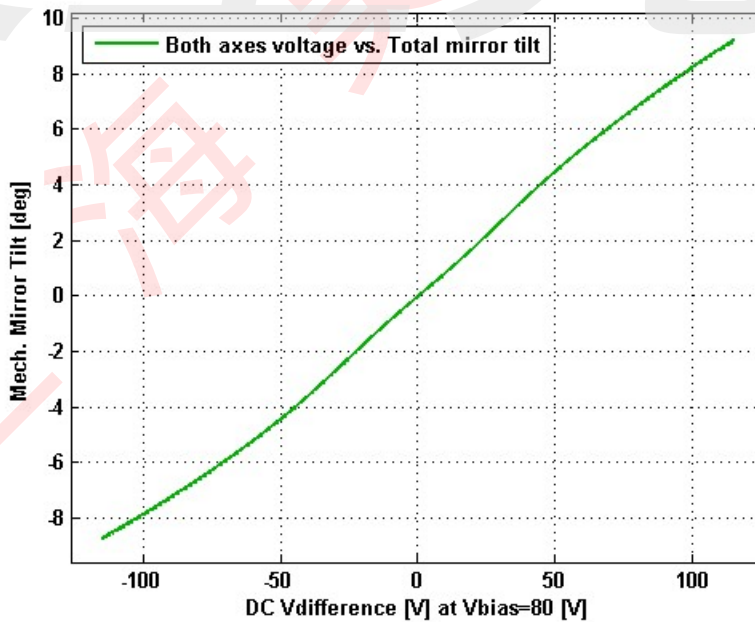
---

# Static Response

## Voltage vs. Mech. Angle - Individual Axes

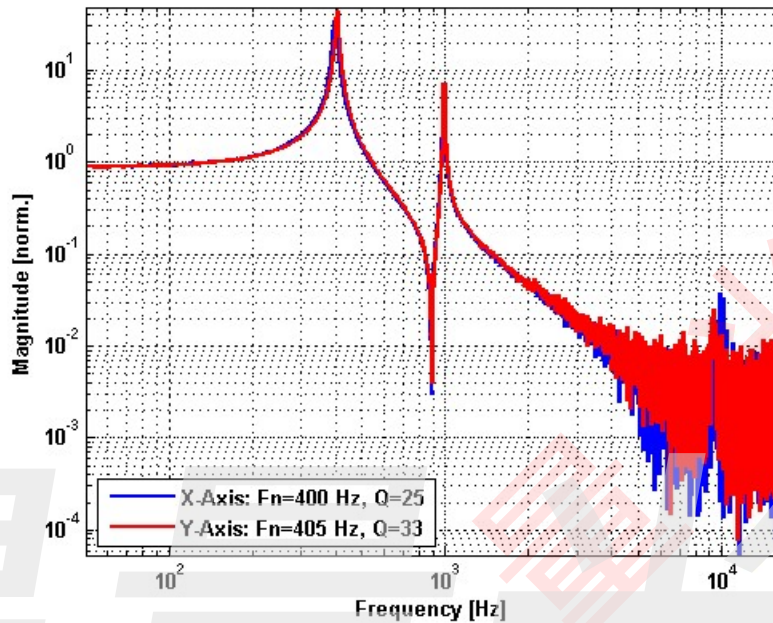


## Voltage vs. Mech. Angle - Coupled Axes

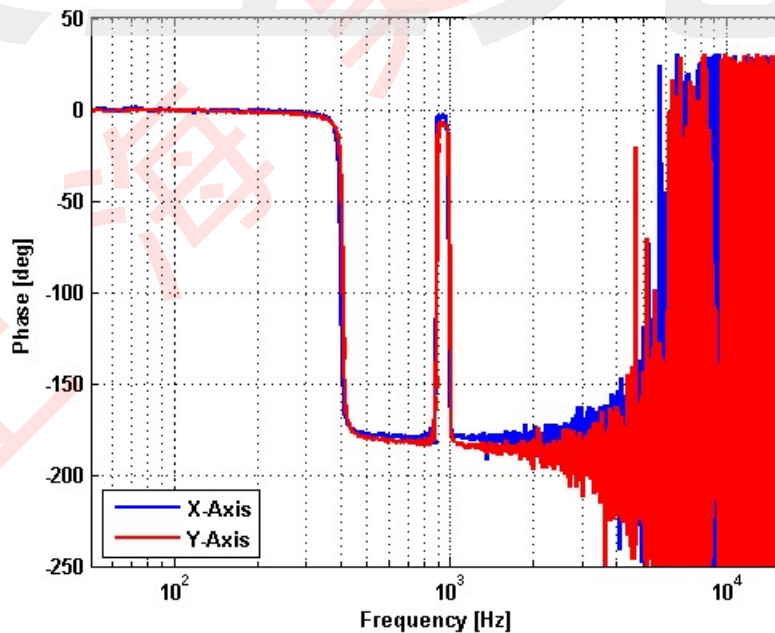


# Frequency Response

## Small Signal Frequency Response - Magnitude

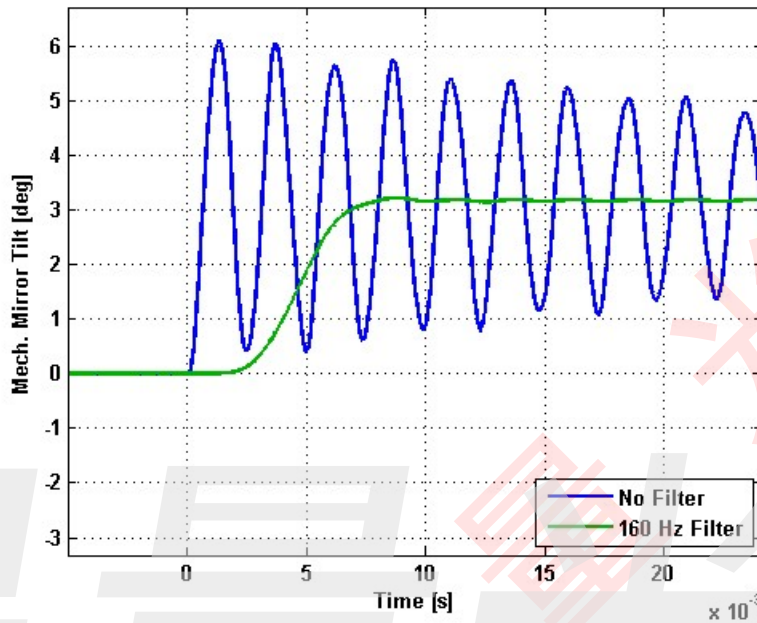


## Small Signal Frequency Response - Phase

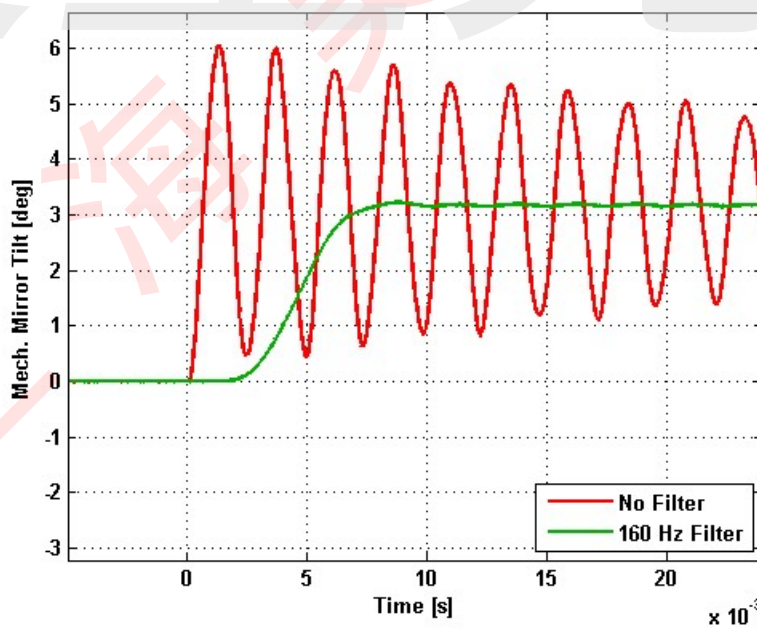


# Step Response

## X-Axis Step Response



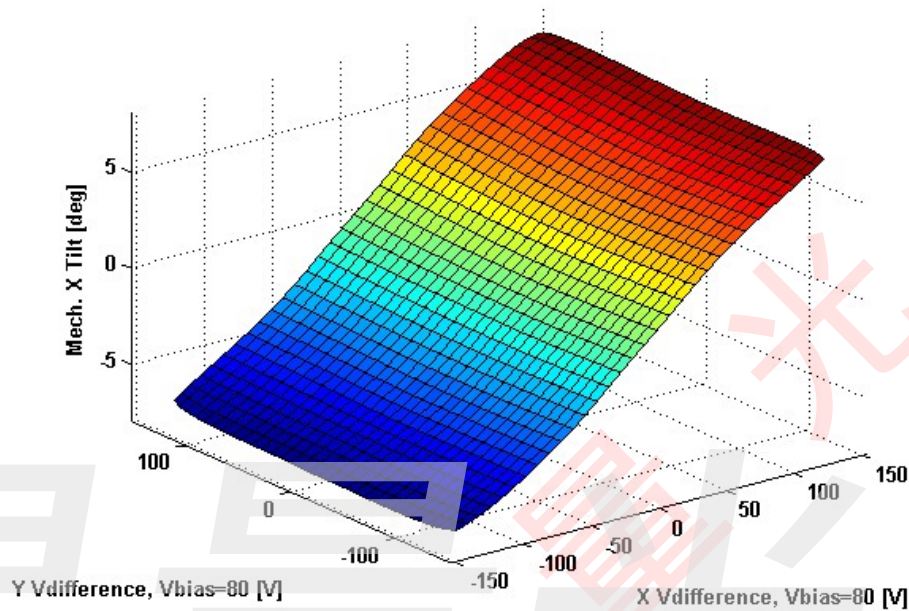
## Y-Axis Step Response



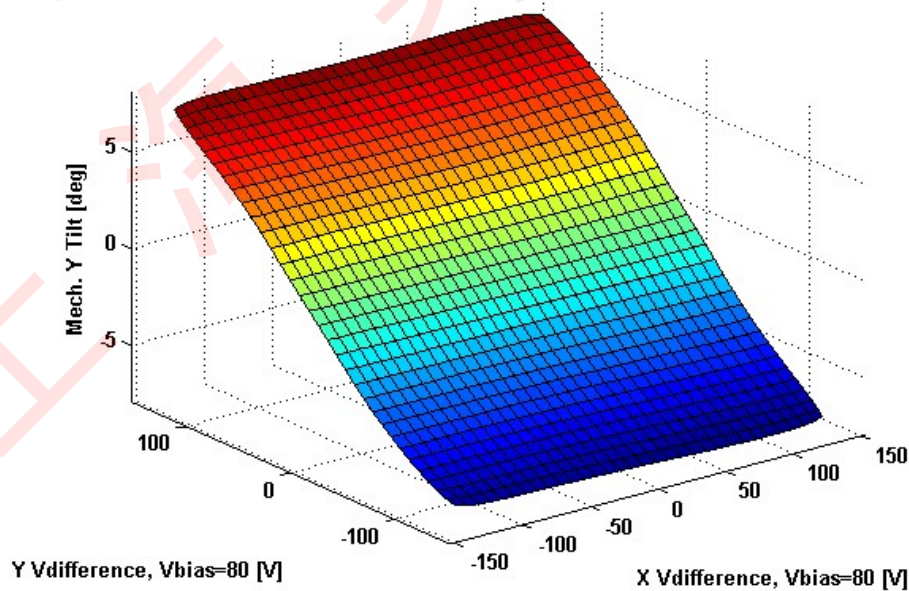
---

# 2D Lookup Tables

## Voltage vs. X Mech. Angle - Lookup Table



## Voltage vs. Y Mech. Angle - Lookup Table



## Y vs. X Tilt - Addressable Mech. Angles

