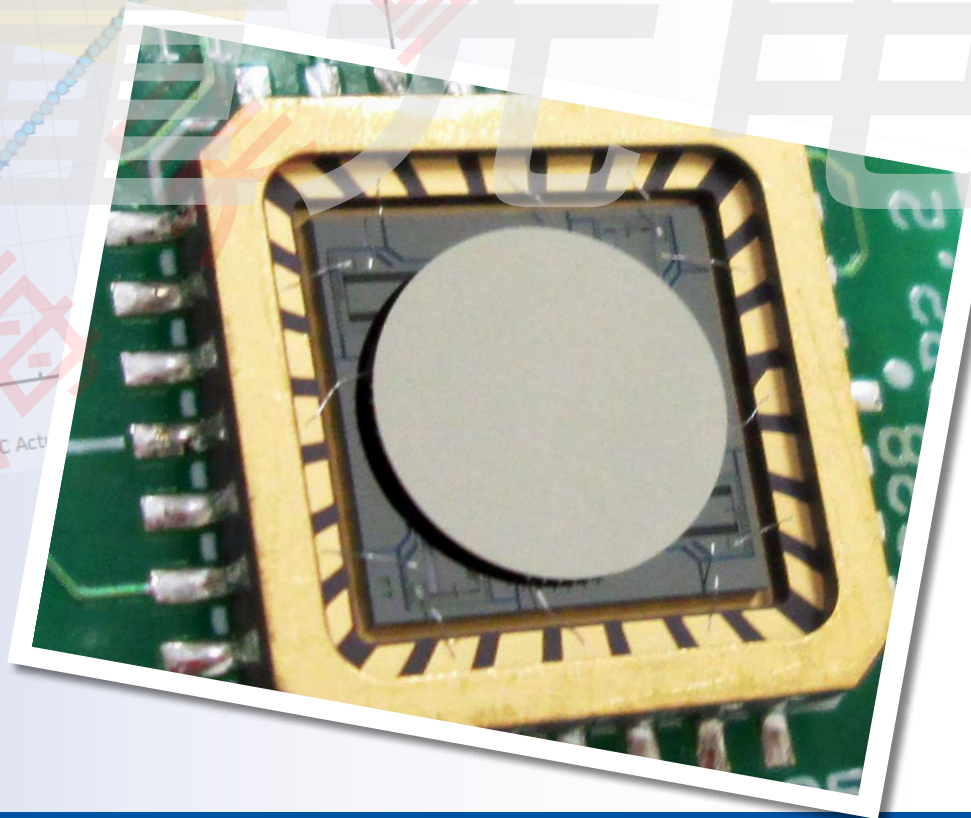
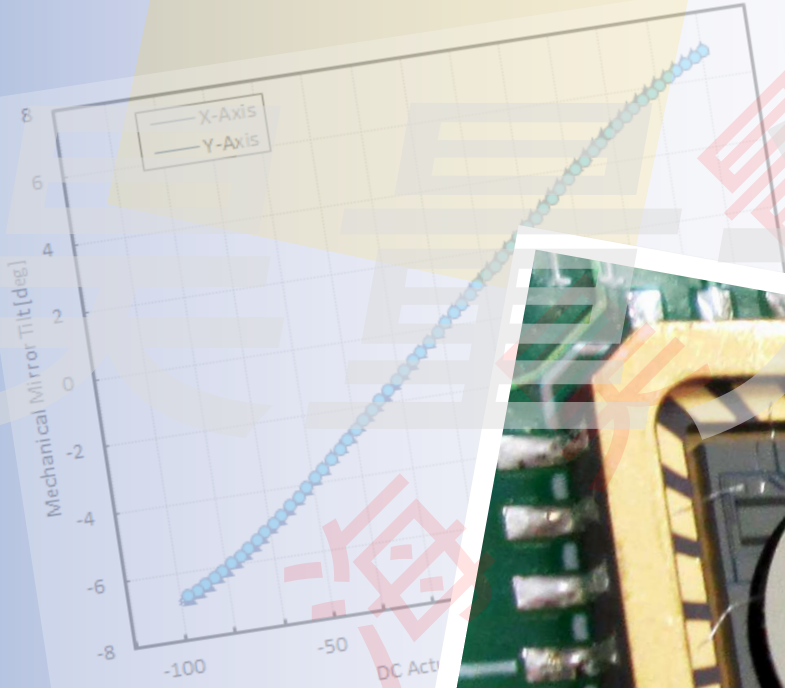


Gimbal-Less Two-Axis Scanning MEMS Micromirrors

Device Datasheet
S4494



www.auniontech.com

Device Parameters Summary

Device ID : S4494

Actuator Name : A7B2.1

Actuator Type : 4-Quadrant (Two-Axis, Bidirectional)

Mirror Type and Size : Bonded mirror of 2.4mm diameter

Mirror Coating : Gold

Maximum Angle - X Axis [degrees] : 5.5693

Maximum Angle - Y Axis [degrees] : 5.6094

Maximum Voltage - X Axis [V] : 150

Maximum Voltage - Y Axis [V] : 149

Bias Voltage [V] : 80

Maximum Angle - Coupled Axes [degrees] : 7.0250

Resonant Frequency - X Axis [Hz] : 745

Resonant Frequency - Y Axis [Hz] : 742

Quality Factor- X Axis : 52

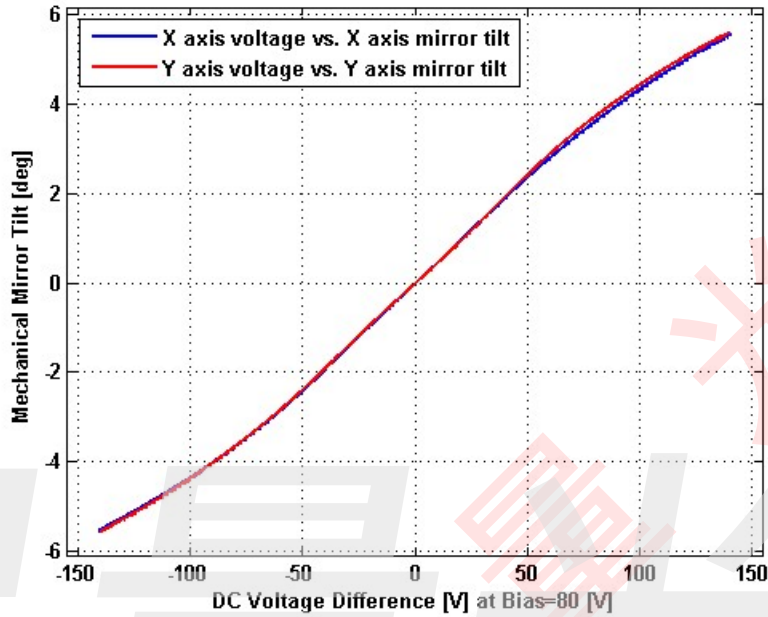
Quality Factor - Y Axis : 46

Recommended LPF Cutoff Frequency (6th Order Bessel) : 320

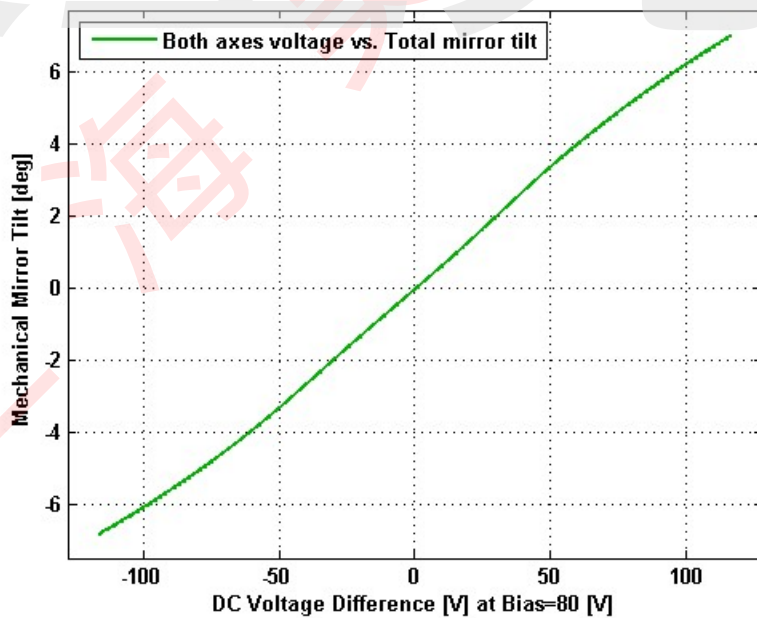
Date and Time Report was Created: 27-Mar-2015 at 14:6:35

Static Response

Voltage vs. Angle - Individual Axes

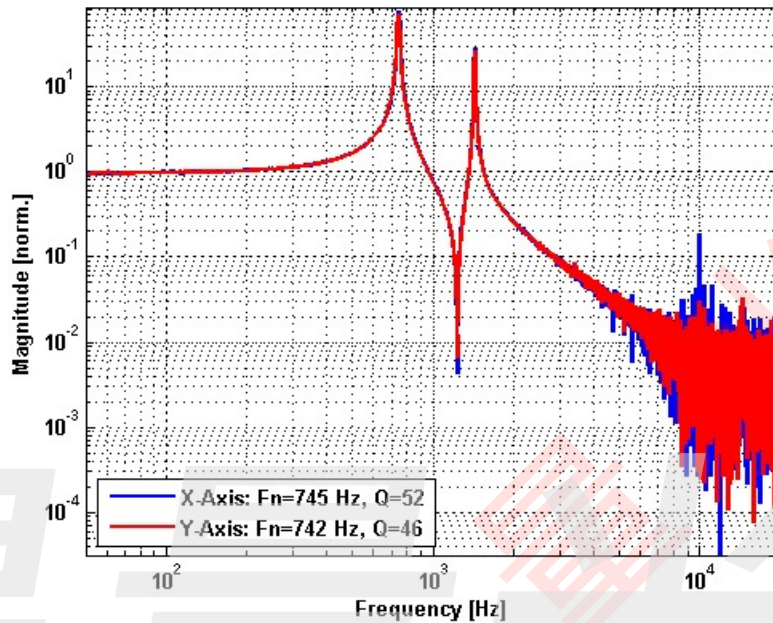


Voltage vs. Angle - Coupled Axes

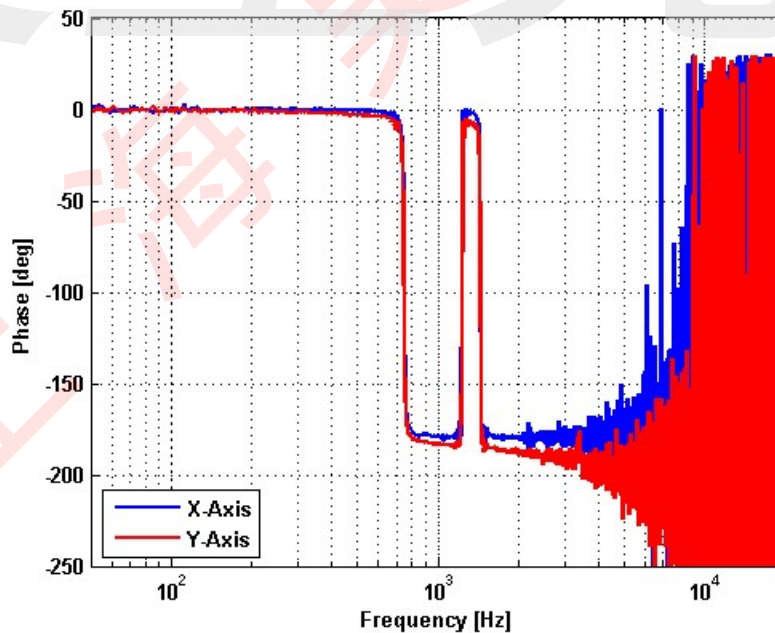


Frequency Response

Small Signal Frequency Response - Magnitude

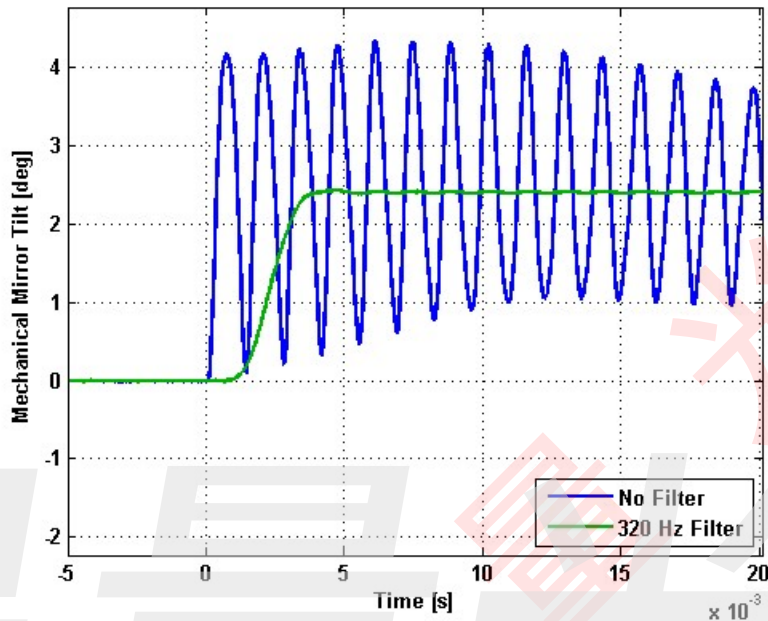


Small Signal Frequency Response - Phase

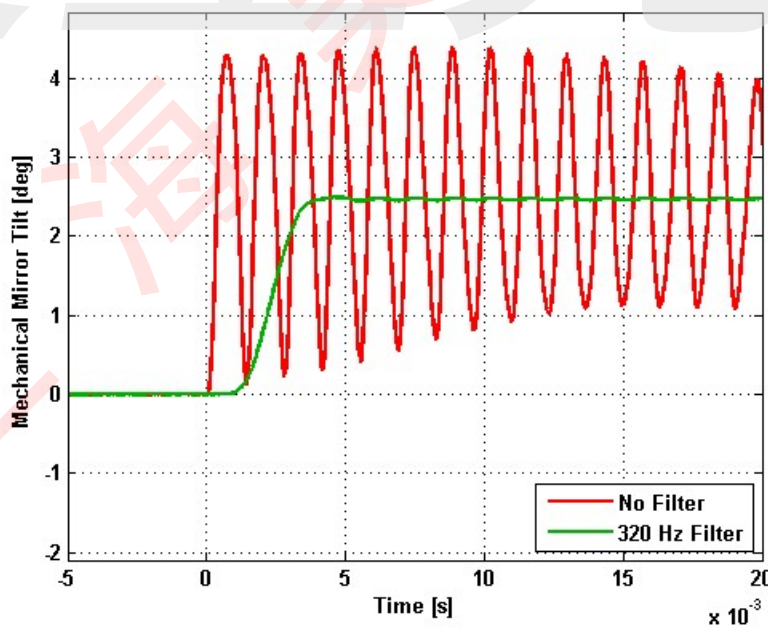


Step Response

X-Axis Step Response

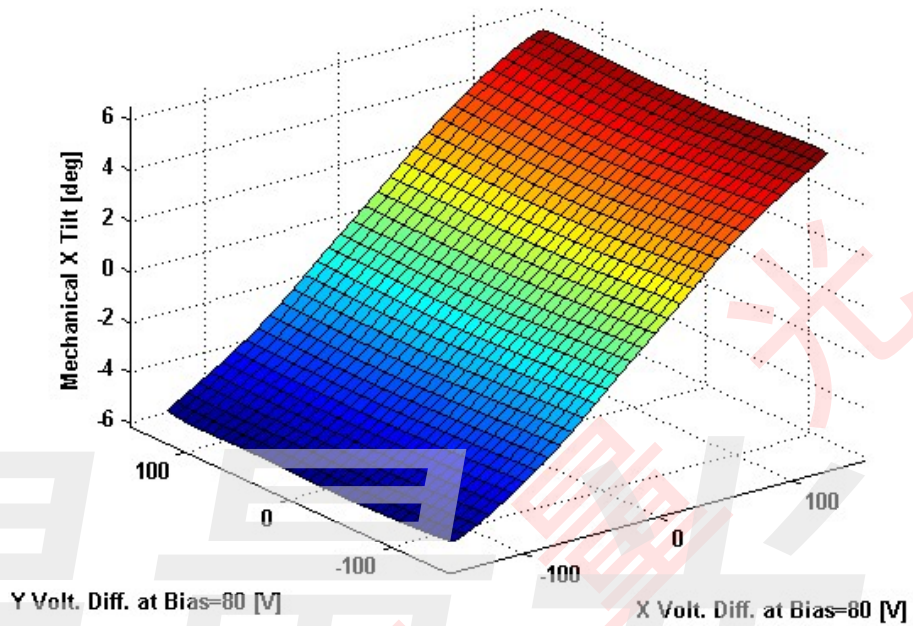


Y-Axis Step Response

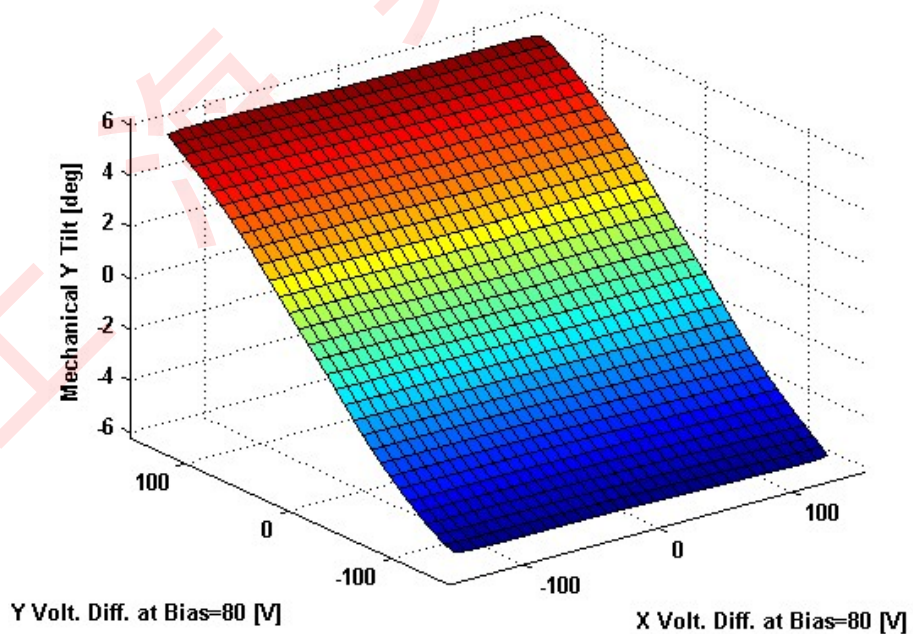


2D Lookup Tables

Voltage vs. X Angle - Lookup Table



Voltage vs. Y Angle - Lookup Table



Y Angle vs. X Angle - Addressable Angles

