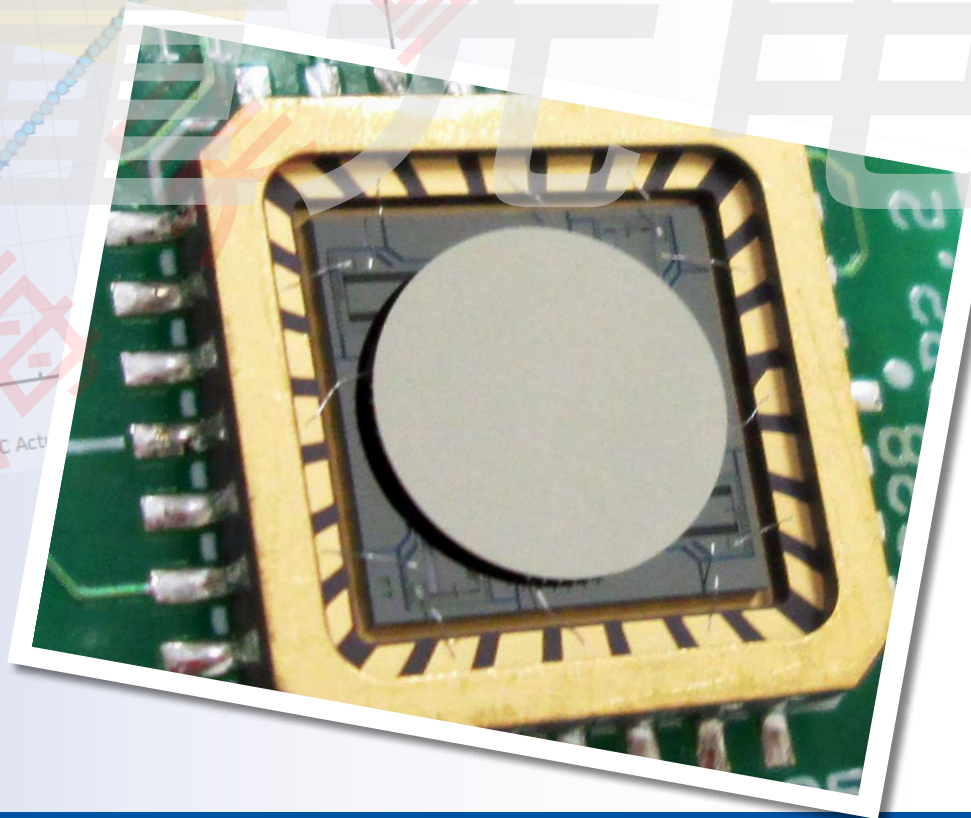
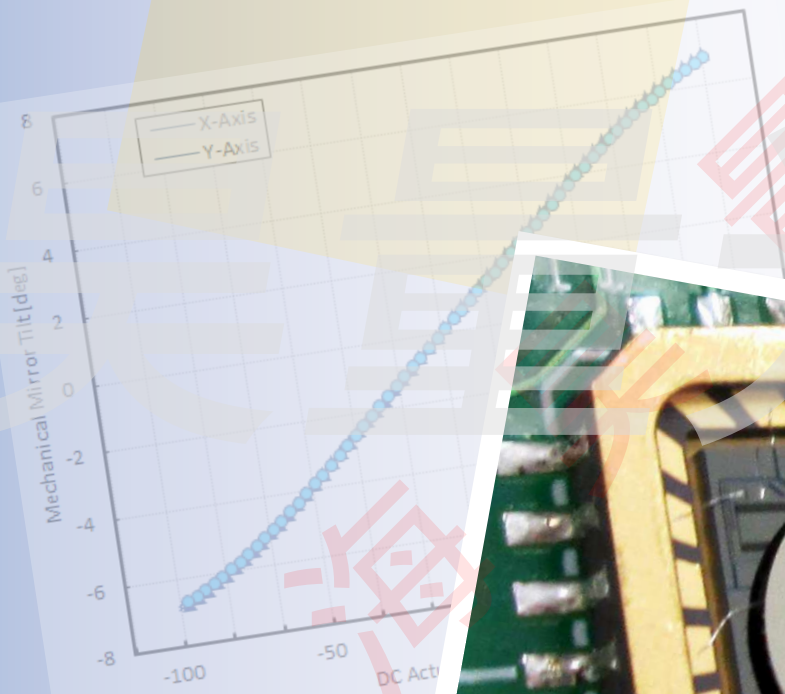


# Gimbal-Less Two-Axis Scanning MEMS Micromirrors

Device Datasheet  
S4495



[www.auniontech.com](http://www.auniontech.com)

---

# Device Parameters Summary

**Device ID :** S4495

**Actuator Name :** A7B2.1

**Actuator Type :** 4-Quadrant (Two-Axis, Bidirectional)

**Mirror Type and Size :** Bonded mirror of 3.0mm diameter

**Mirror Coating :** Gold

**Maximum Angle - X Axis [degrees] :** 5.6467

**Maximum Angle - Y Axis [degrees] :** 5.6302

**Maximum Voltage - X Axis [V] :** 150

**Maximum Voltage - Y Axis [V] :** 149

**Bias Voltage [V] :** 80

**Maximum Angle - Coupled Axes [degrees] :** 7.1145

**Resonant Frequency - X Axis [Hz] :** 520

**Resonant Frequency - Y Axis [Hz] :** 518

**Quality Factor- X Axis :** 37

**Quality Factor - Y Axis :** 36

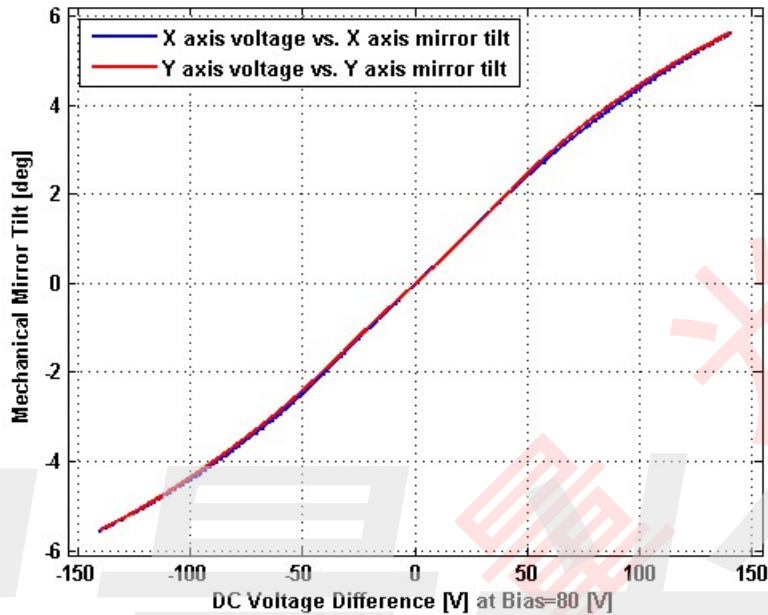
**Recommended LPF Cutoff Frequency (6th Order Bessel) :** 240

**Date and Time Report was Created:** 27-Mar-2015 at 14:21:5

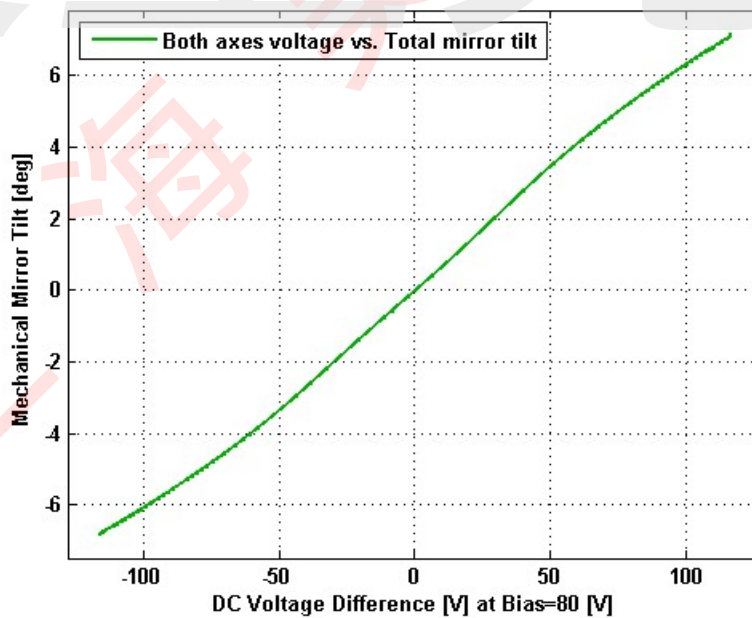
---

# Static Response

## Voltage vs. Angle - Individual Axes

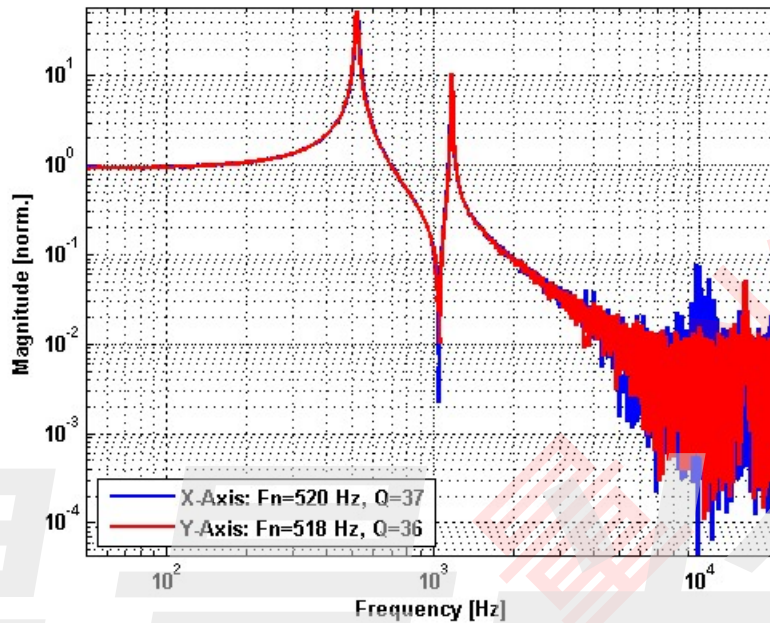


## Voltage vs. Angle - Coupled Axes

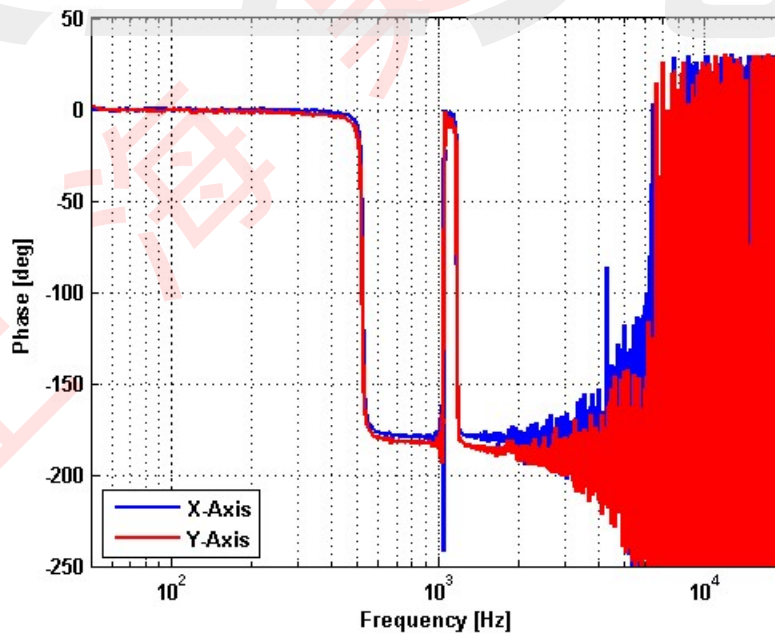


# Frequency Response

## Small Signal Frequency Response - Magnitude

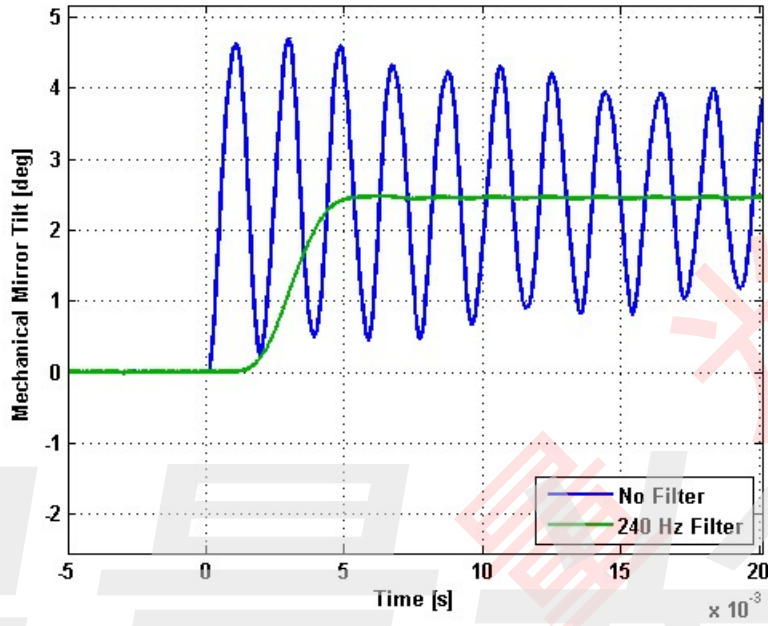


## Small Signal Frequency Response - Phase

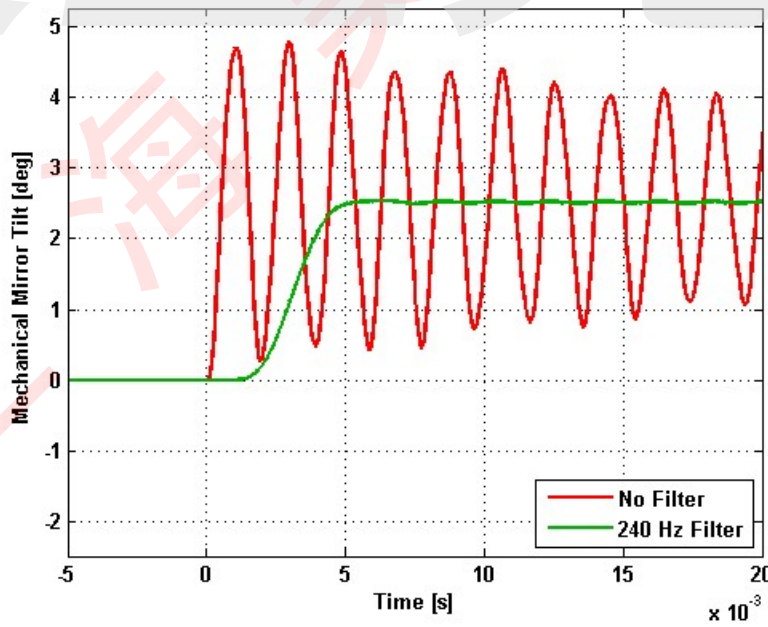


# Step Response

## X-Axis Step Response



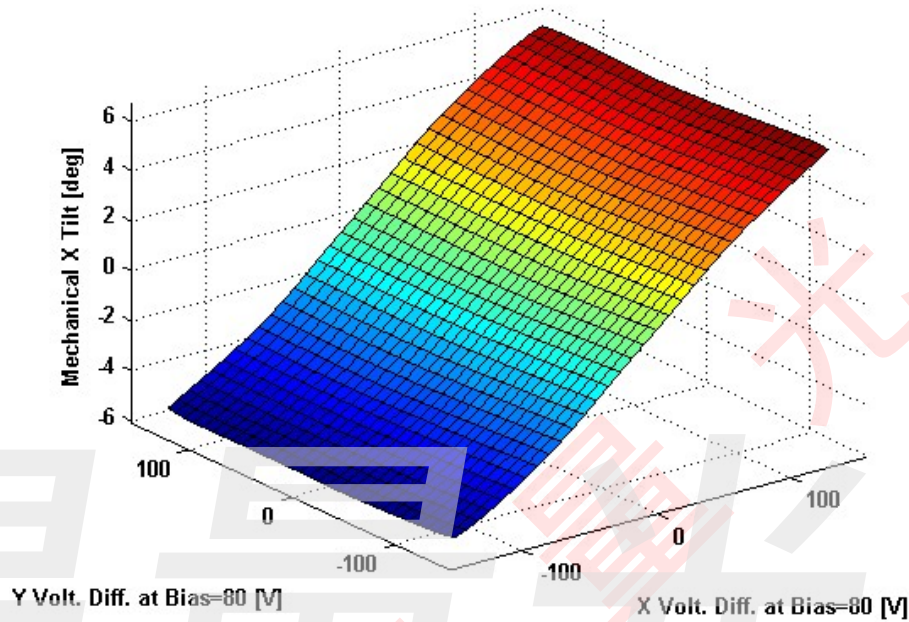
## Y-Axis Step Response



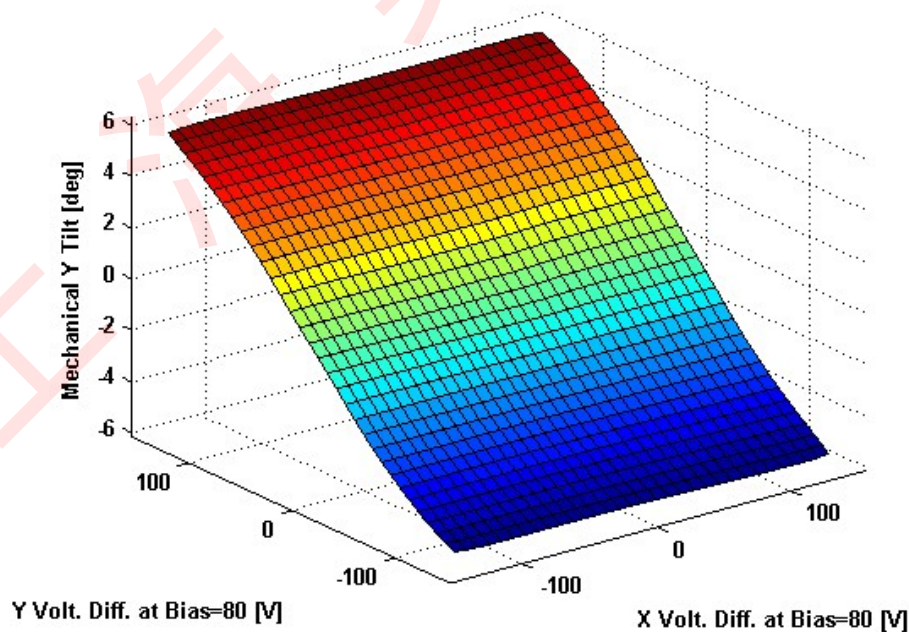
---

# 2D Lookup Tables

## Voltage vs. X Angle - Lookup Table



## Voltage vs. Y Angle - Lookup Table



## Y Angle vs. X Angle - Addressable Angles

