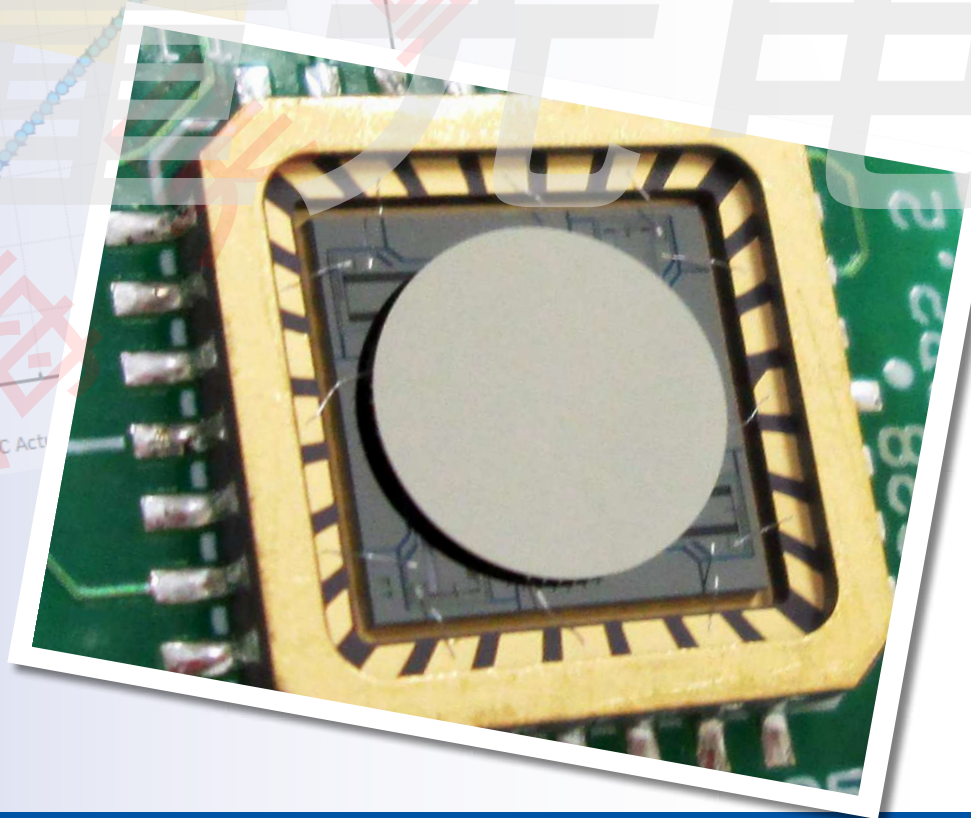
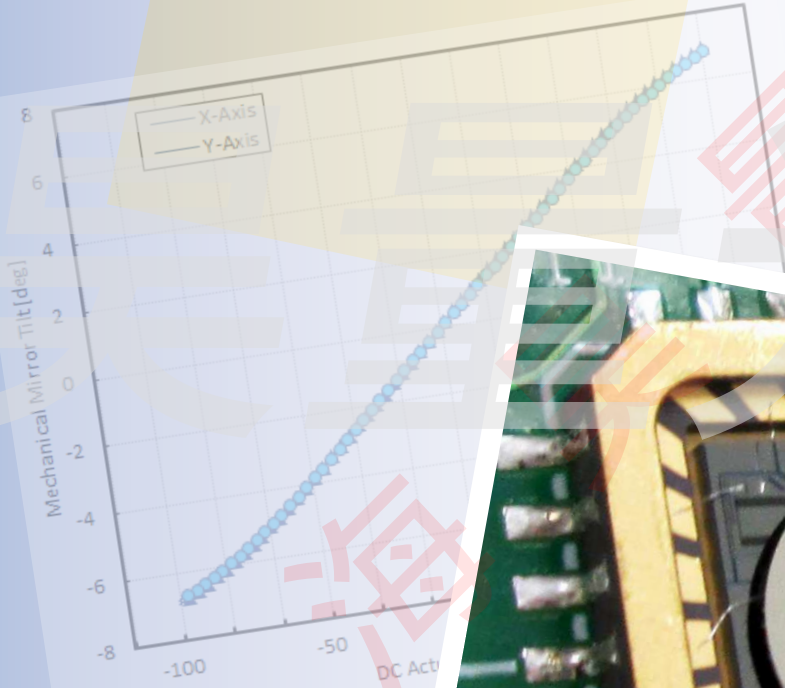


Gimbal-Less Two-Axis Scanning MEMS Micromirrors

Device Datasheet
S4677



www.auniontech.com

Device Parameters Summary

Device ID : S4677

Actuator Name : A7M8.1

Actuator Type : 4-Quadrant (Two-Axis, Bidirectional)

Mirror Type and Size : Integrated mirror of 800um diameter

Mirror Coating : Aluminum

Maximum Angle - X Axis [degrees] : 5.0353

Maximum Angle - Y Axis [degrees] : 5.0225

Maximum Voltage - X Axis [V] : 158

Maximum Voltage - Y Axis [V] : 158

Bias Voltage [V] : 80

Maximum Angle - Coupled Axes [degrees] : 6.3503

Resonant Frequency - X Axis [Hz] : 5964

Resonant Frequency - Y Axis [Hz] : 5969

Quality Factor- X Axis : 48

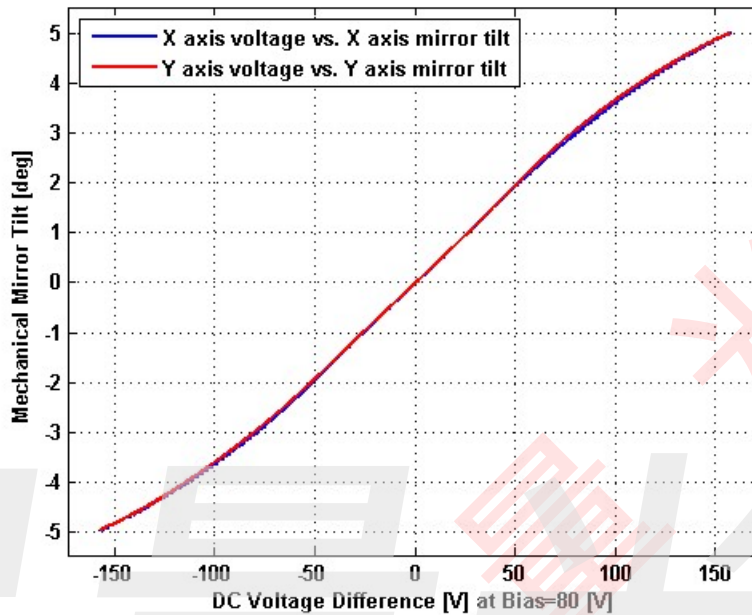
Quality Factor - Y Axis : 51

Recommended LPF Cutoff Frequency (6th Order Bessel) : 2400

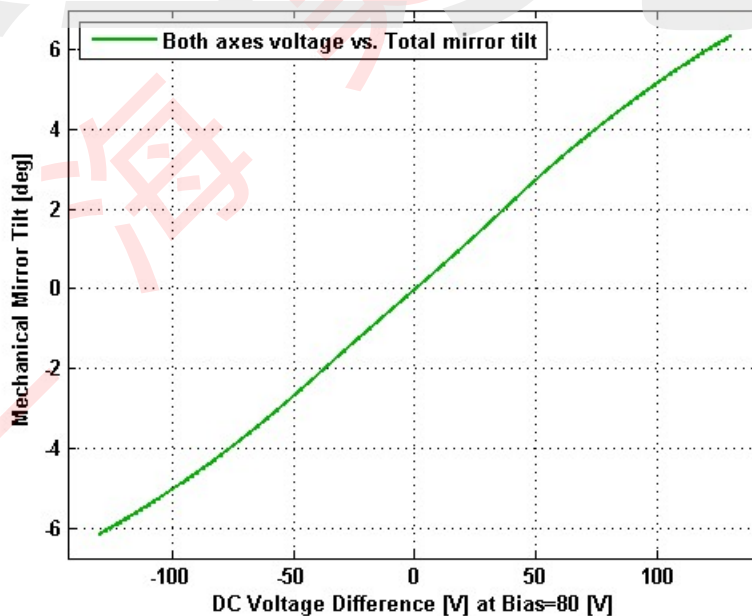
Date and Time Report was Created: 03-Jun-2015 at 14:40:34

Static Response

Voltage vs. Angle - Individual Axes

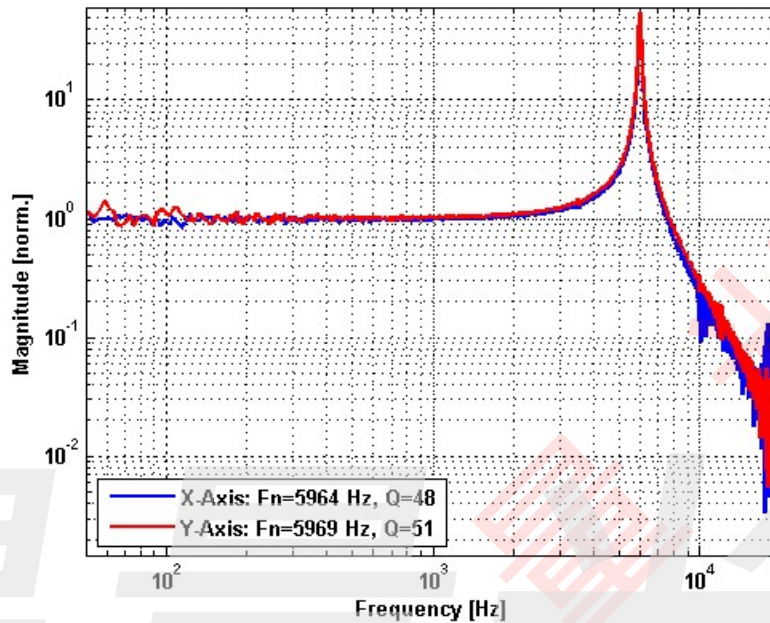


Voltage vs. Angle - Coupled Axes

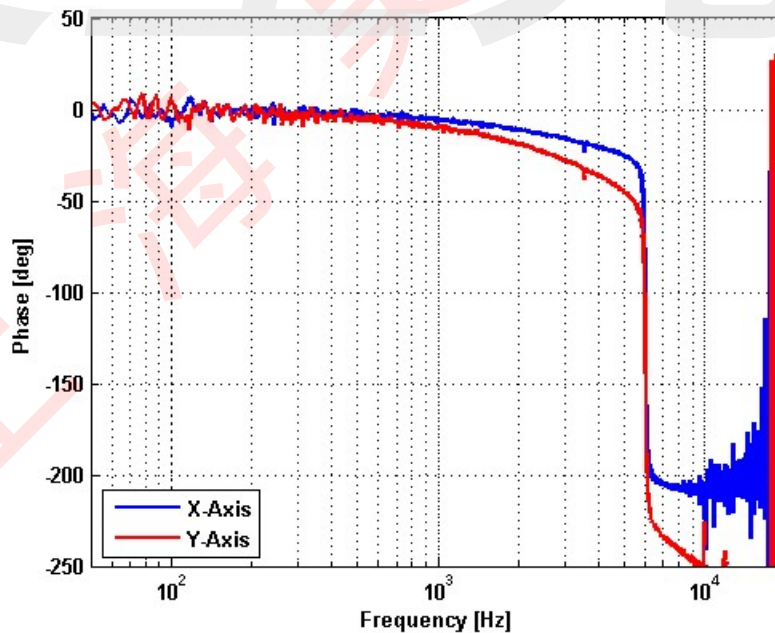


Frequency Response

Small Signal Frequency Response - Magnitude

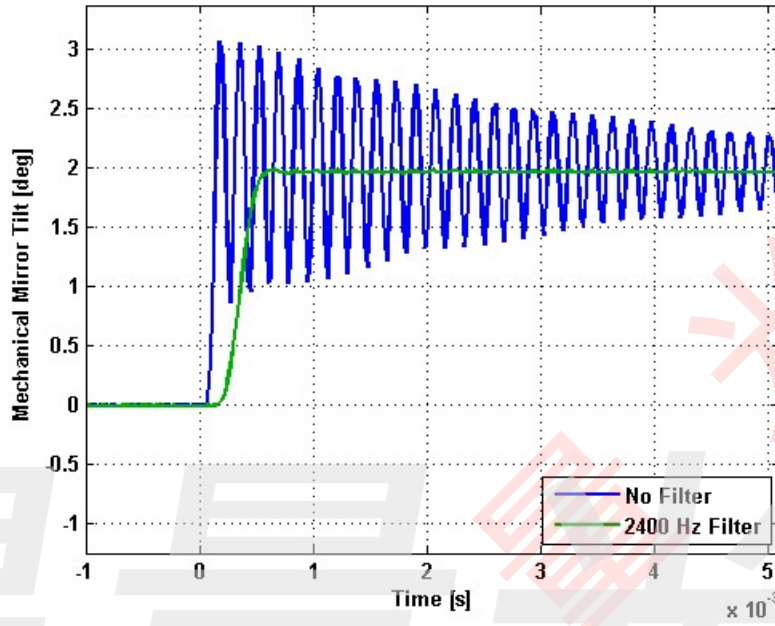


Small Signal Frequency Response - Phase

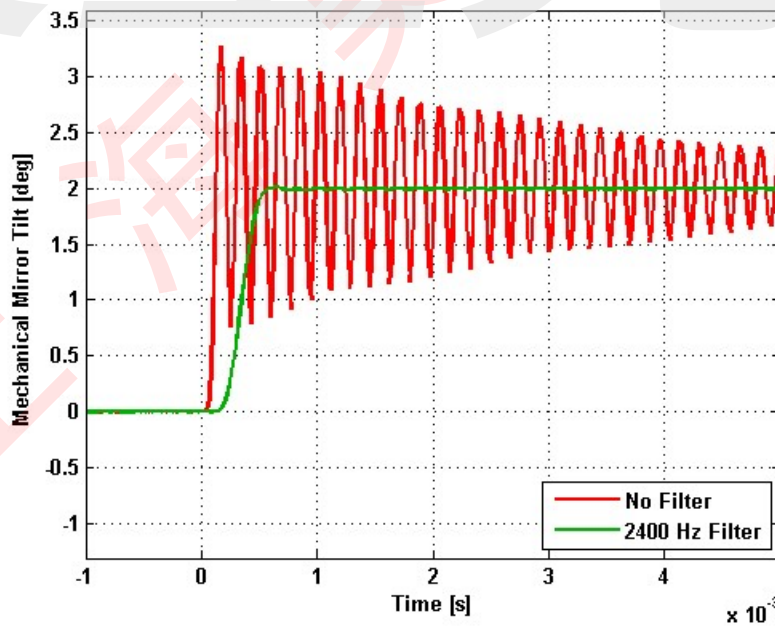


Step Response

X-Axis Step Response

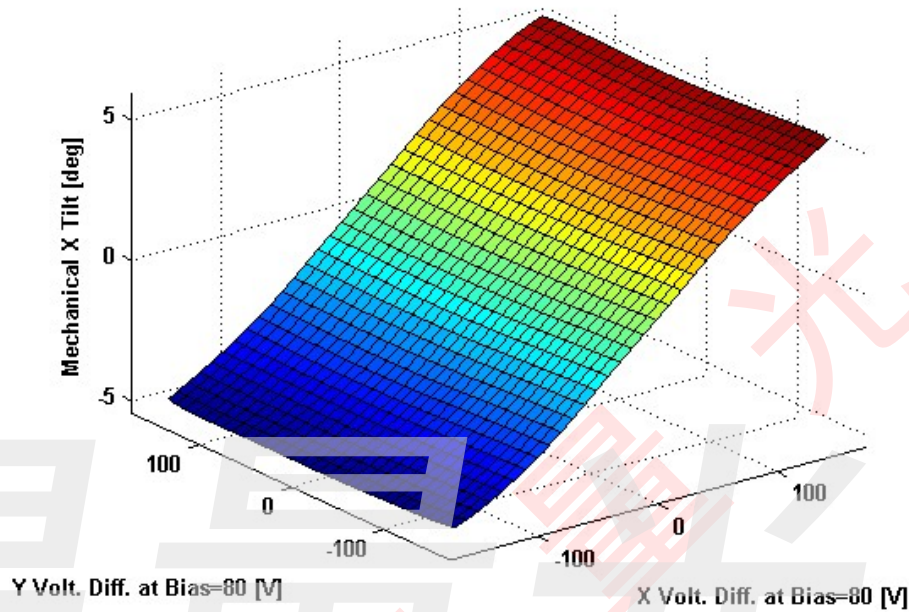


Y-Axis Step Response

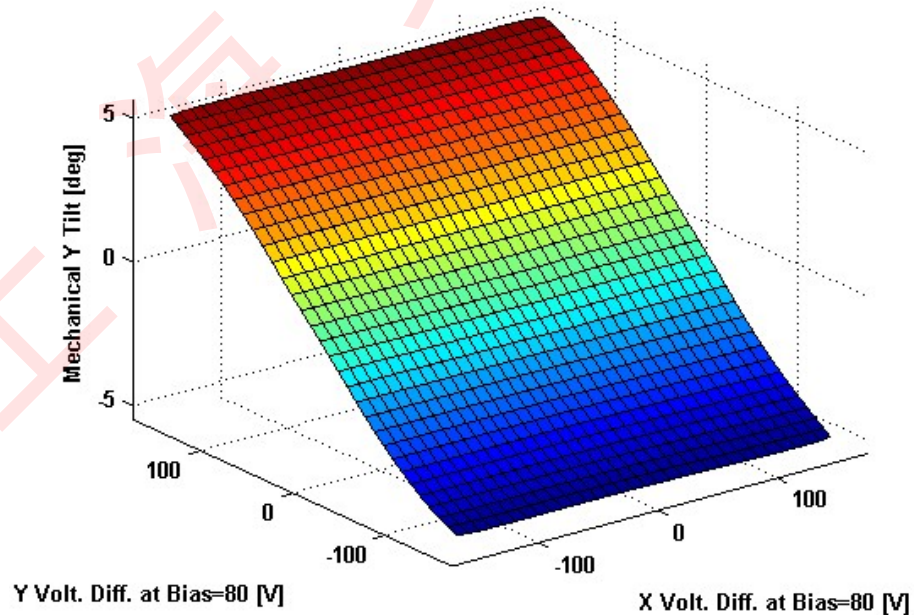


2D Lookup Tables

Voltage vs. X Angle - Lookup Table



Voltage vs. Y Angle - Lookup Table



Y Angle vs. X Angle - Addressable Angles

