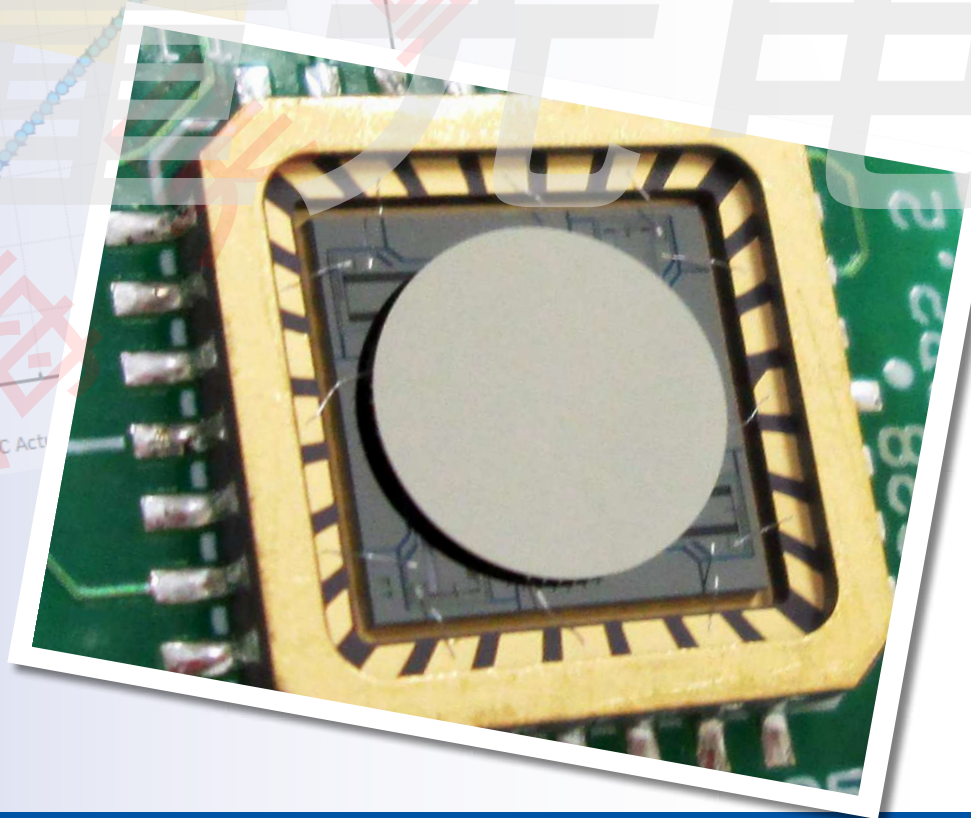
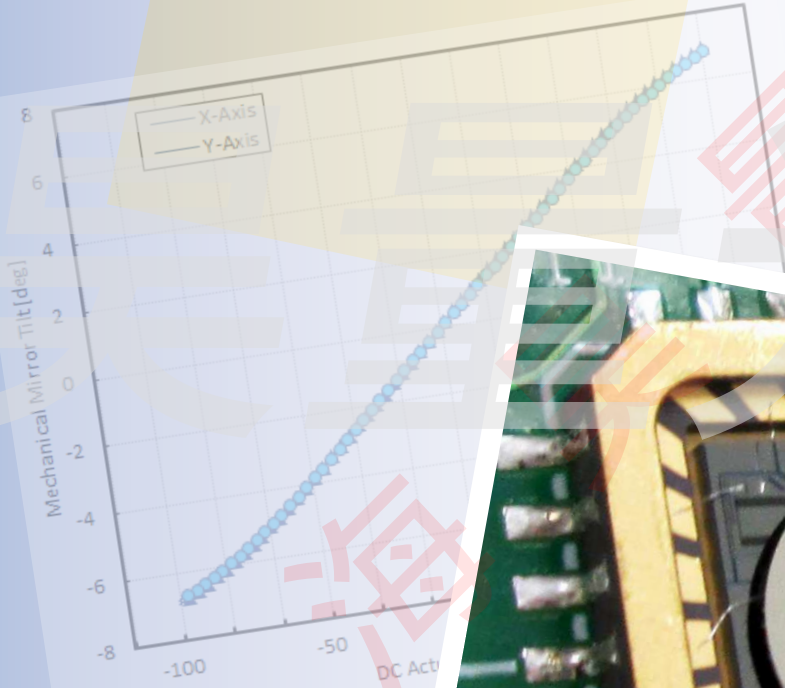


Gimbal-Less Two-Axis Scanning MEMS Micromirrors

Device Datasheet
S6032



www.auniontech.com

Device Parameters Summary

Device ID : S6032

Actuator Name : A7B1.1

Actuator Type : 4-Quadrant (Two-Axis, Bidirectional)

Mirror Type and Size : Bonded mirror of 2.0mm diameter

Mirror Coating : Aluminum

Maximum Angle - X Axis [degrees] : 6.3845

Maximum Angle - Y Axis [degrees] : 6.3347

Maximum Voltage - X Axis [V] : 135

Maximum Voltage - Y Axis [V] : 135

Bias Voltage [V] : 70

Maximum Angle - Coupled Axes [degrees] : 7.8856

Resonant Frequency - X Axis [Hz] : 813

Resonant Frequency - Y Axis [Hz] : 815

Quality Factor- X Axis : 57

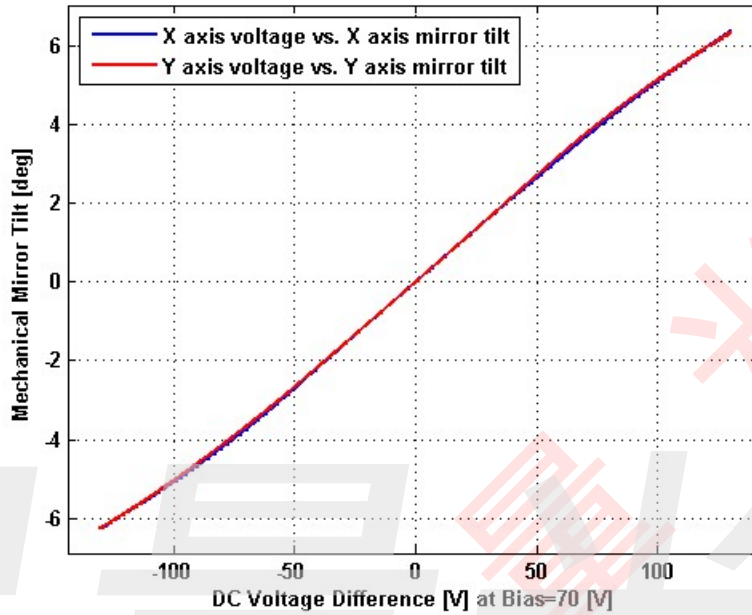
Quality Factor - Y Axis : 57

Recommended LPF Cutoff Frequency (6th Order Bessel) : 350

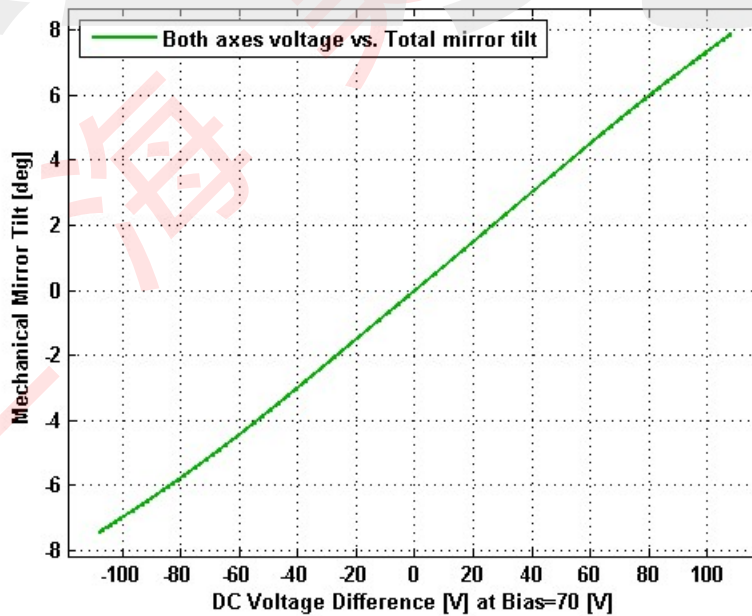
Date and Time Report was Created: 20-Oct-2016 at 16:4:59

Static Response

Voltage vs. Angle - Individual Axes

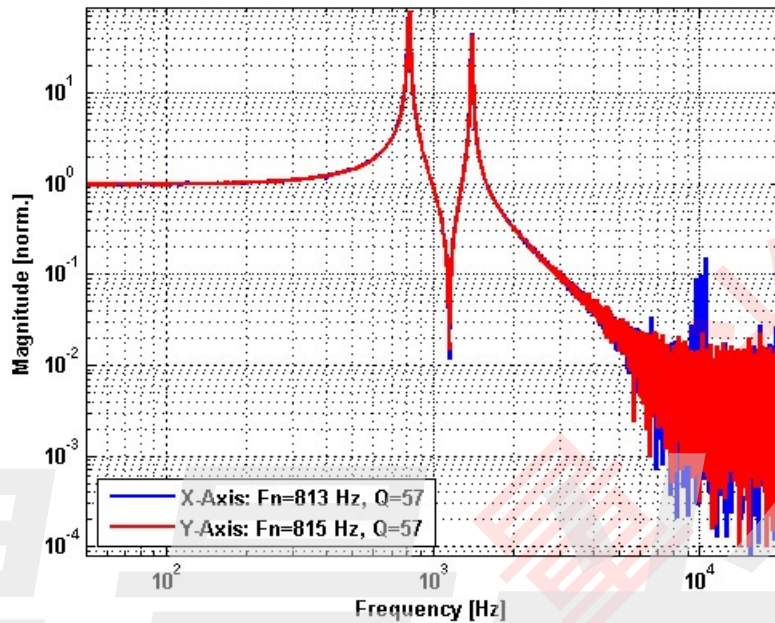


Voltage vs. Angle - Coupled Axes

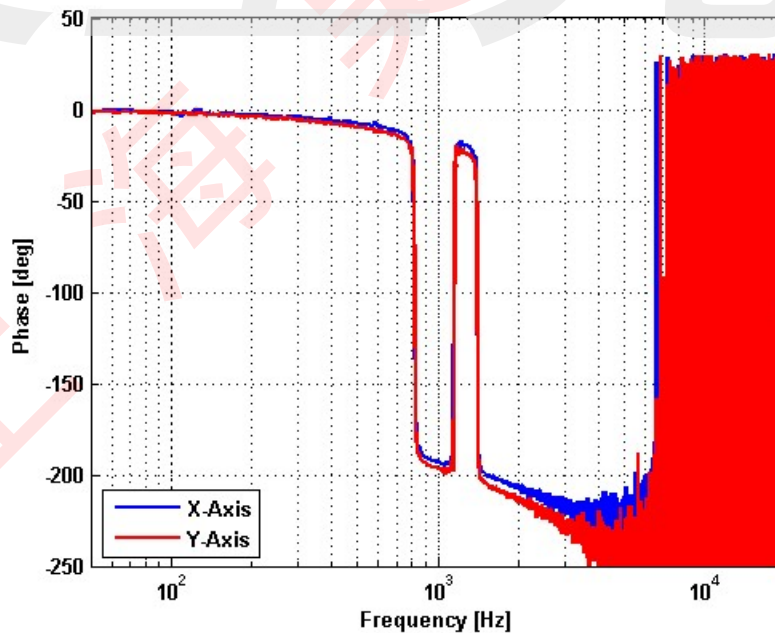


Frequency Response

Small Signal Frequency Response - Magnitude

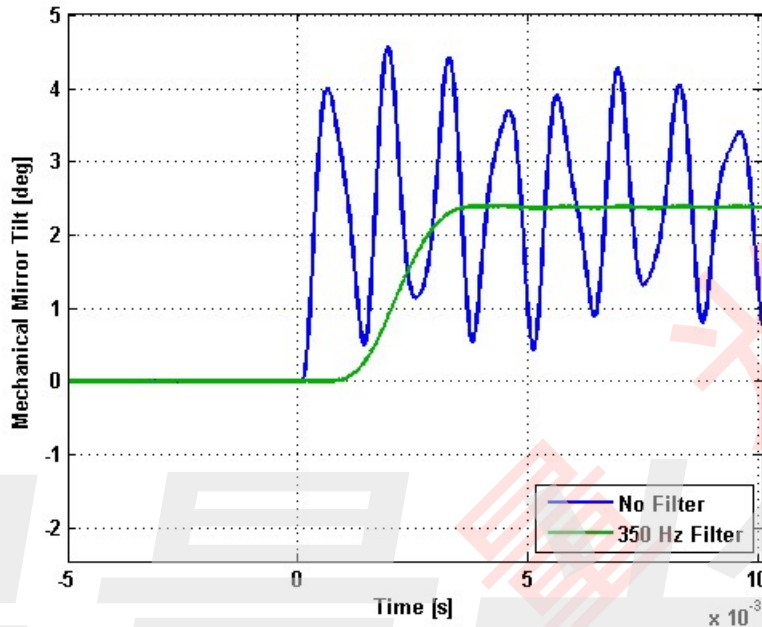


Small Signal Frequency Response - Phase

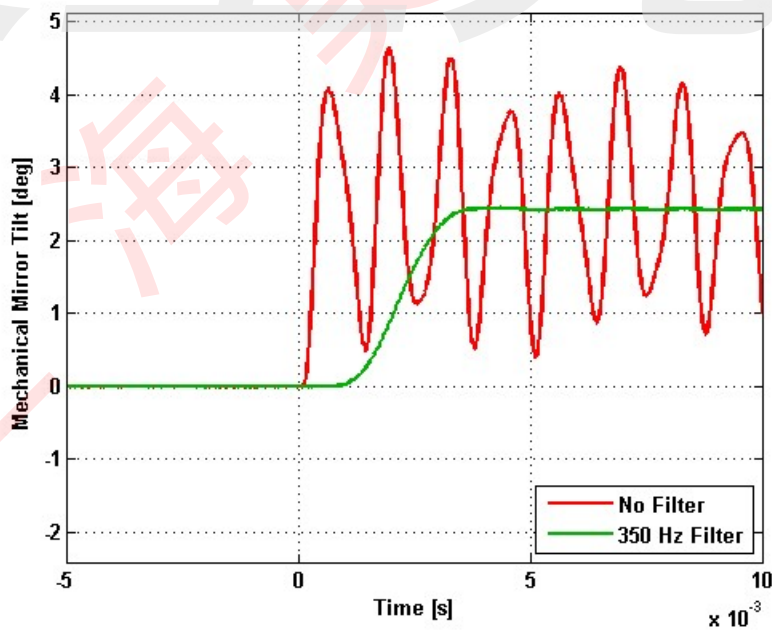


Step Response

X-Axis Step Response

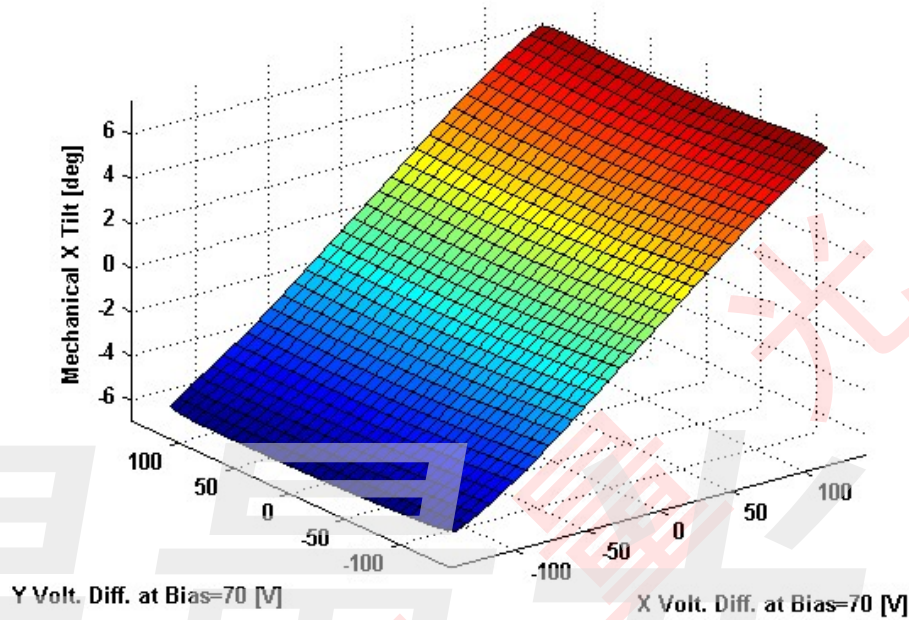


Y-Axis Step Response

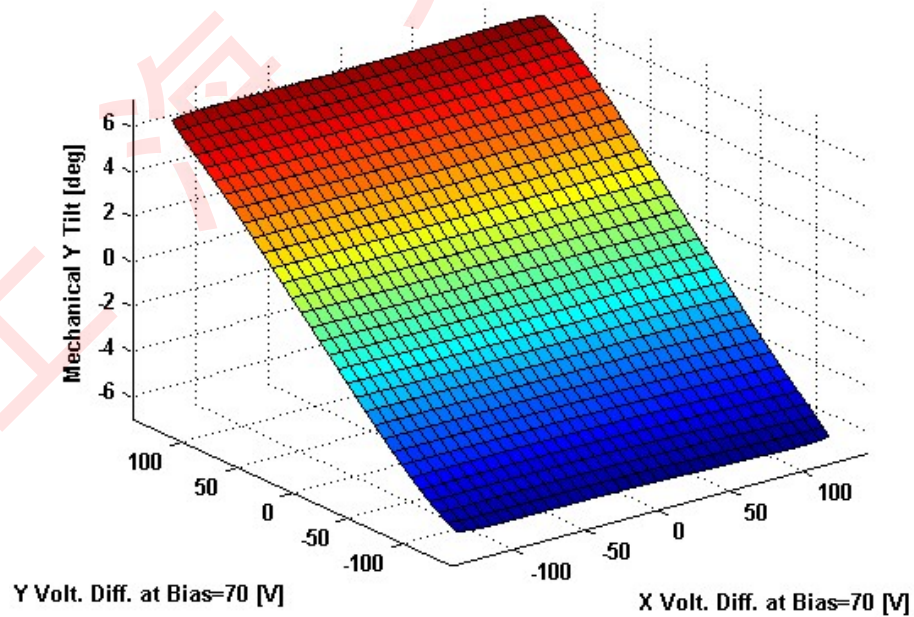


2D Lookup Tables

Voltage vs. X Angle - Lookup Table



Voltage vs. Y Angle - Lookup Table



Y Angle vs. X Angle - Addressable Angles

