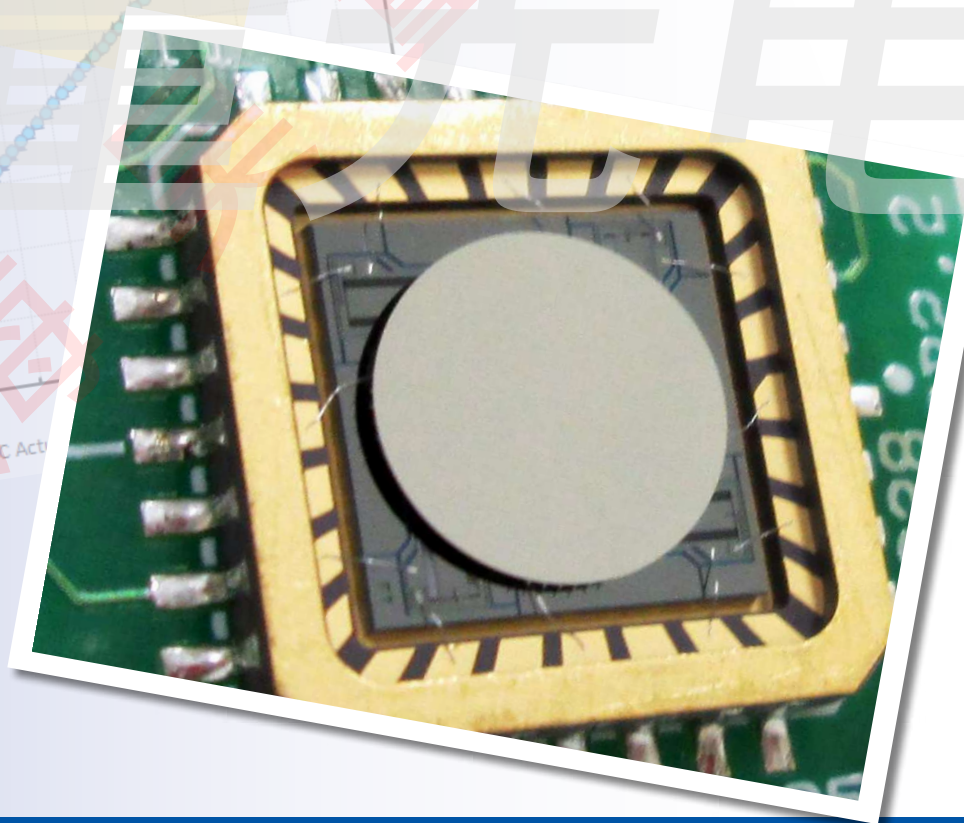
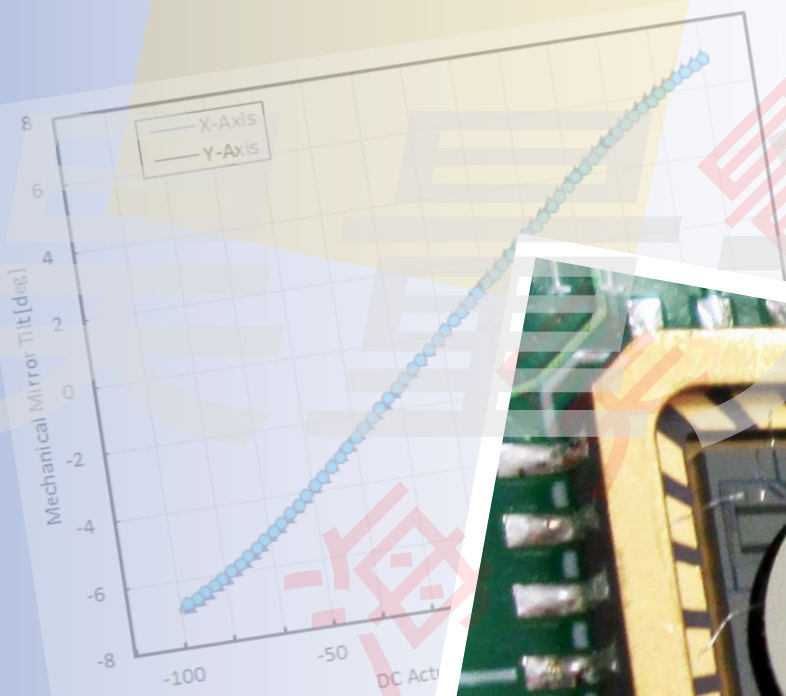


Gimbal-Less Two-Axis Scanning MEMS Micromirrors

Device Datasheet
S6180



www.auniontech.com

Device Parameters Summary

Device ID : S6180

Actuator Name : A5L2.1

Actuator Type : 4-Quadrant (Two-Axis, Bidirectional)

Mirror Type and Size : Bonded mirror of 5.0mm diameter

Mirror Coating : Gold

Maximum Angle - X Axis [degrees] : 1.0567

Maximum Angle - Y Axis [degrees] : 1.0462

Maximum Voltage - X Axis [V] : 159

Maximum Voltage - Y Axis [V] : 159

Bias Voltage [V] : 80

Maximum Angle - Coupled Axes [degrees] : 1.2522

Resonant Frequency - X Axis [Hz] : 1194

Resonant Frequency - Y Axis [Hz] : 1199

Quality Factor- X Axis : 39

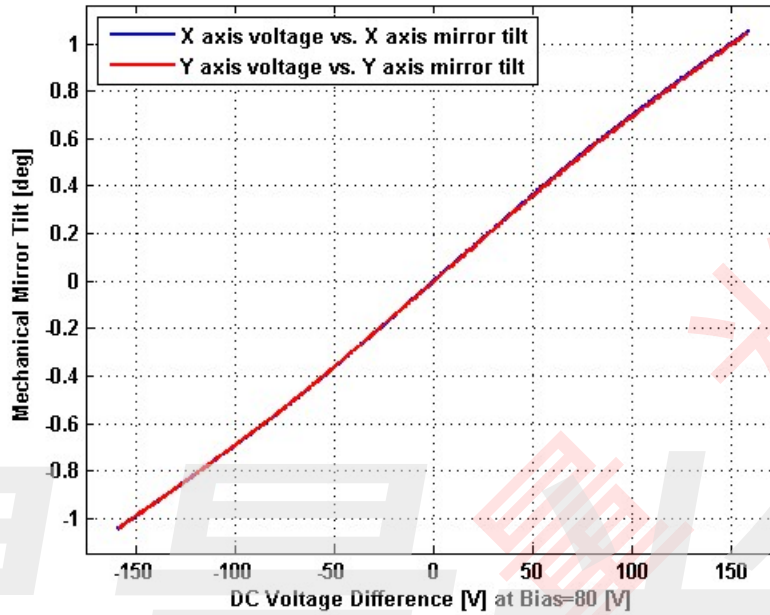
Quality Factor - Y Axis : 37

Recommended LPF Cutoff Frequency (6th Order Bessel) : 500

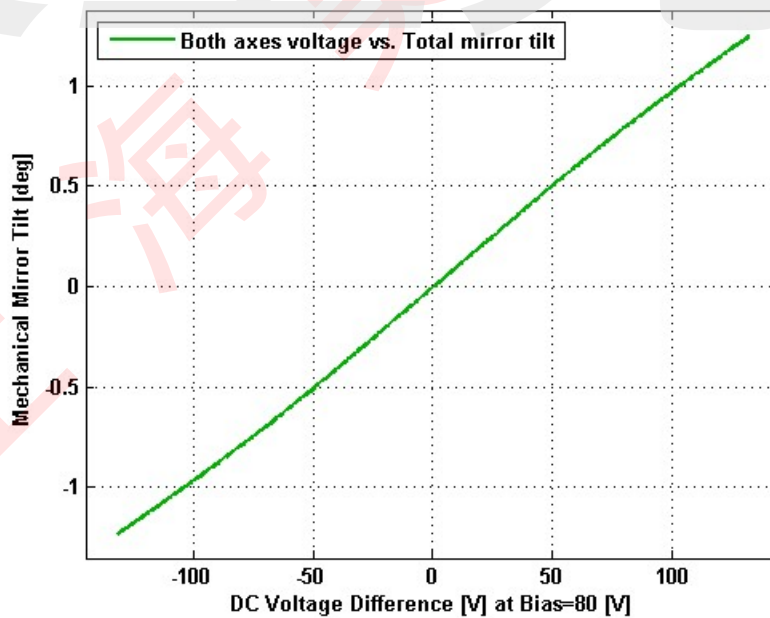
Date and Time Report was Created: 21-Nov-2016 at 11:11:11

Static Response

Voltage vs. Angle - Individual Axes

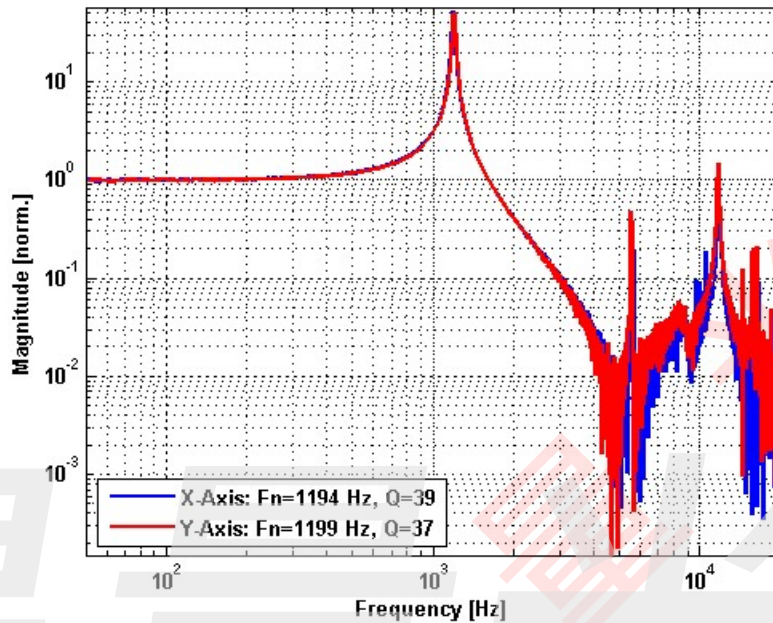


Voltage vs. Angle - Coupled Axes

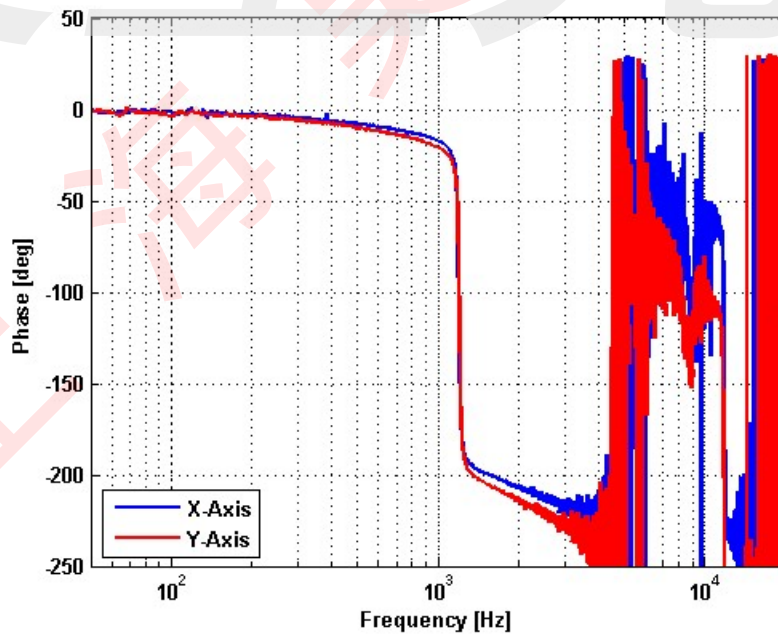


Frequency Response

Small Signal Frequency Response - Magnitude

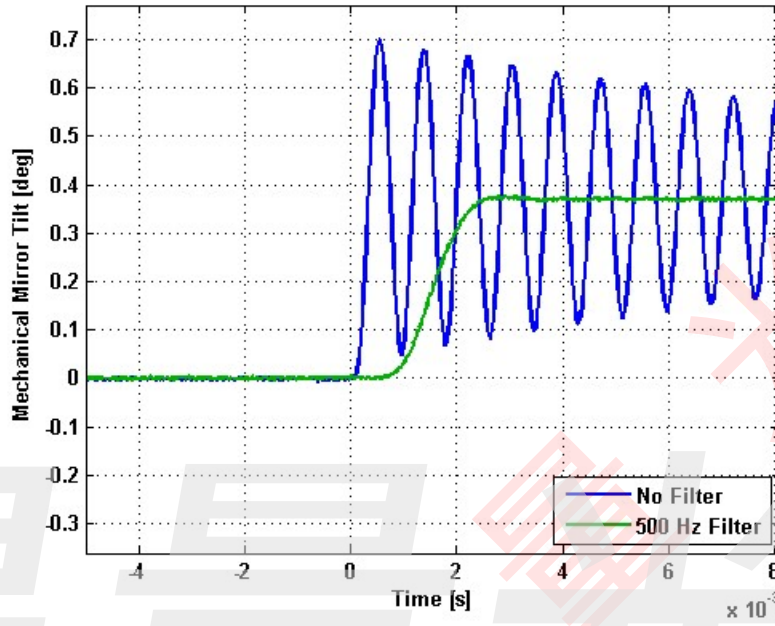


Small Signal Frequency Response - Phase

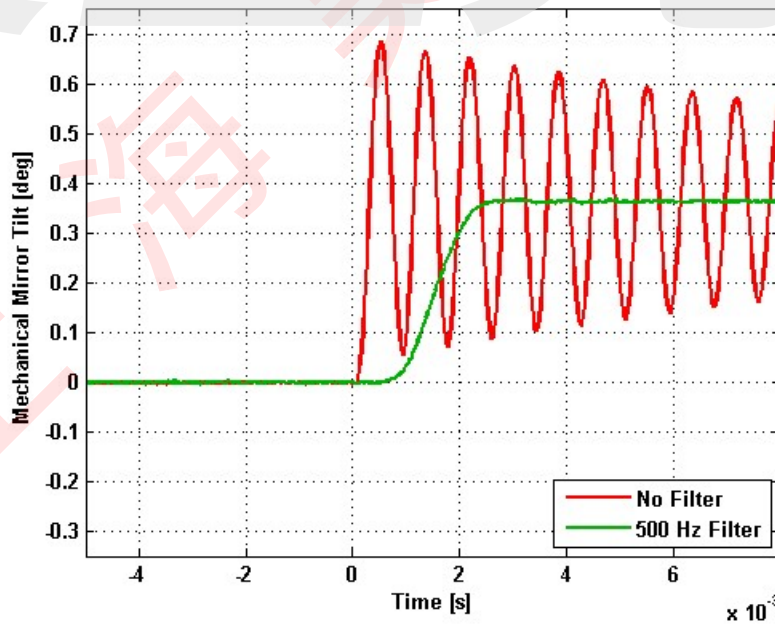


Step Response

X-Axis Step Response

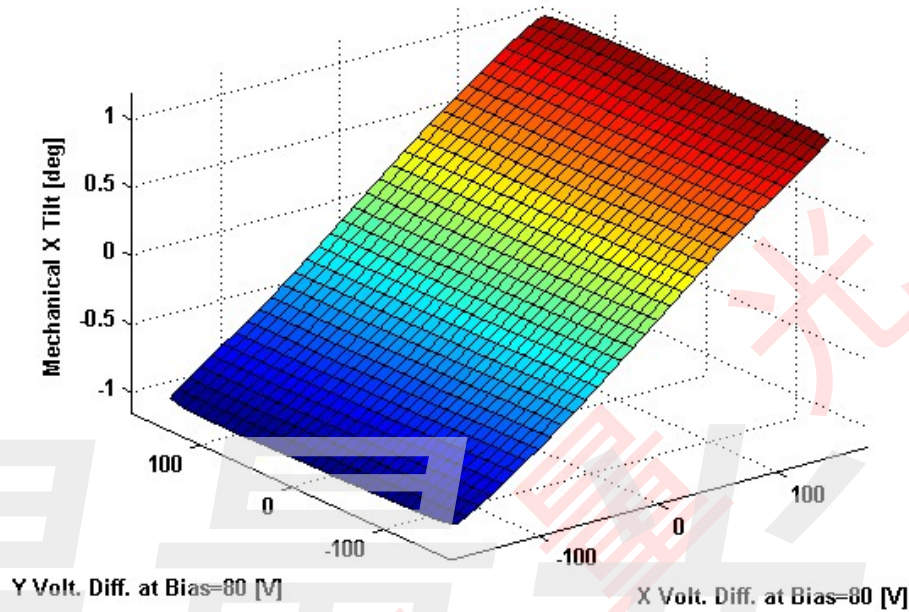


Y-Axis Step Response

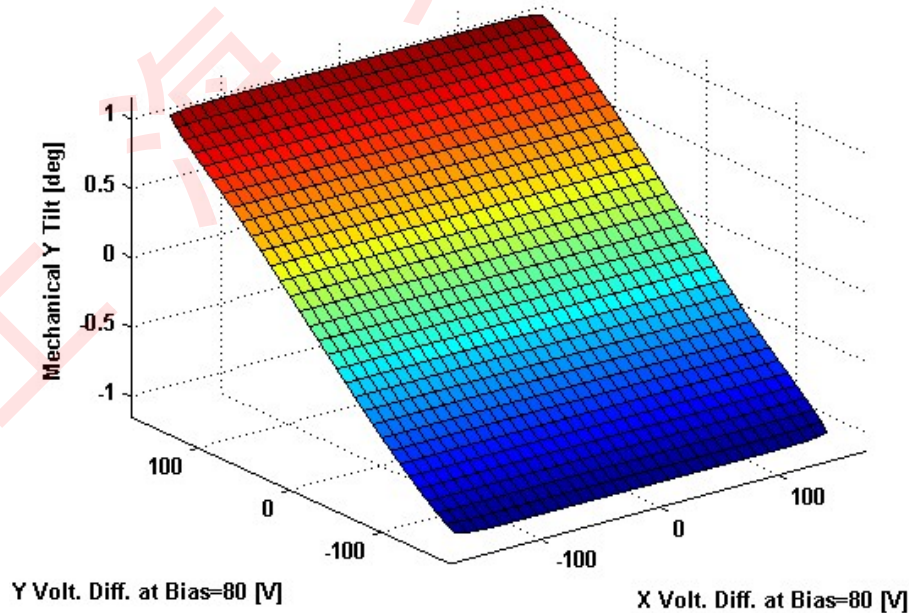


2D Lookup Tables

Voltage vs. X Angle - Lookup Table



Voltage vs. Y Angle - Lookup Table



Y Angle vs. X Angle - Addressable Angles

