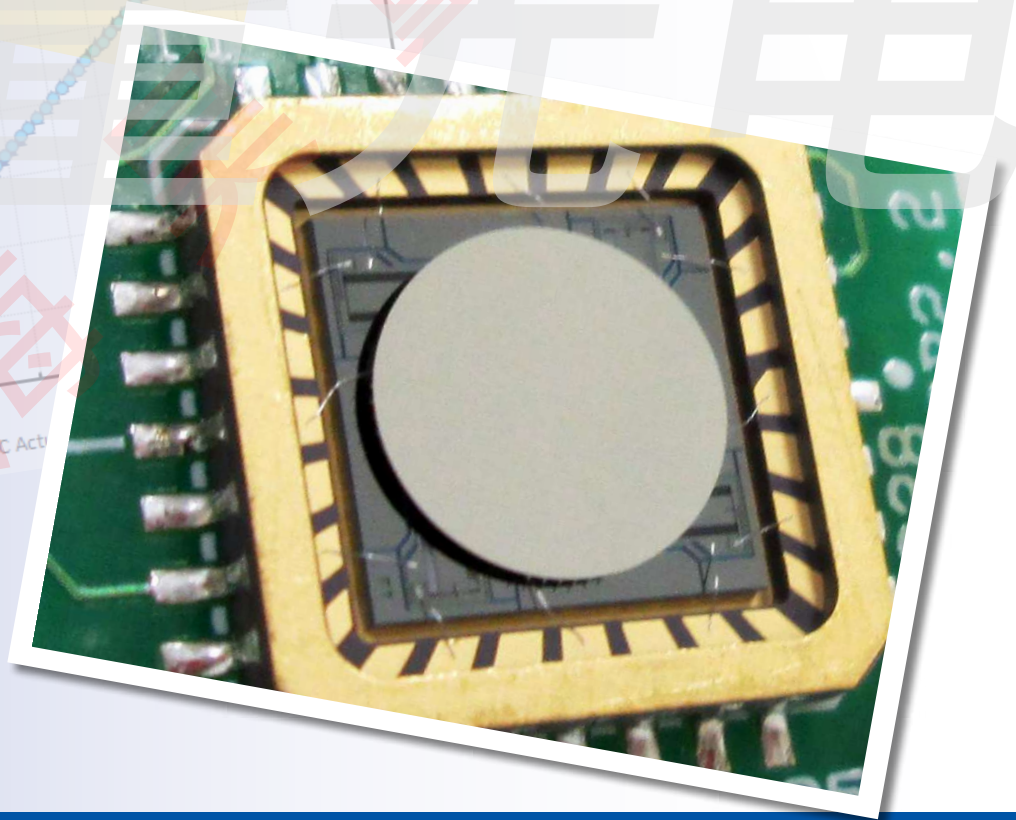
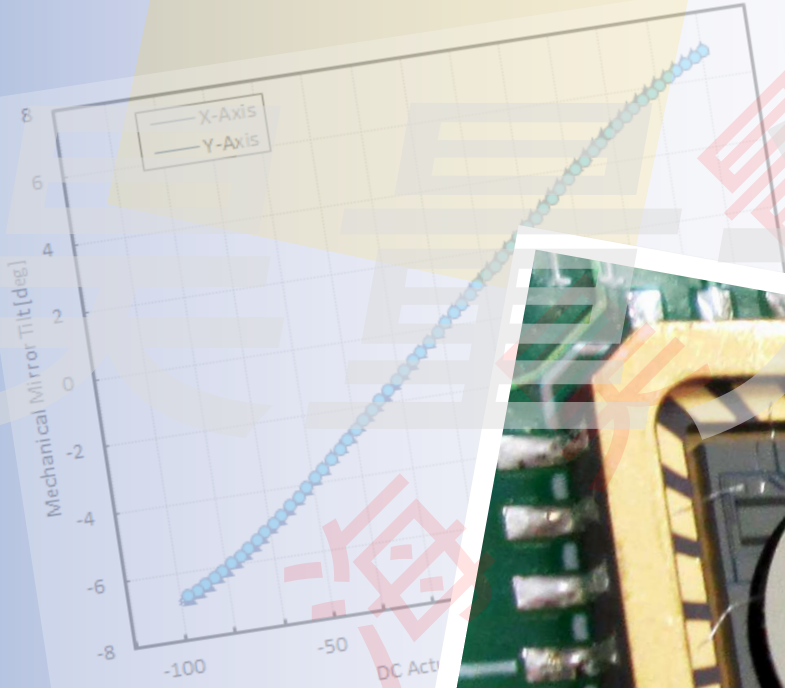


Gimbal-Less Two-Axis Scanning MEMS Micromirrors

Device Datasheet
S40206



www.auniontech.com

Device Parameters Summary

Device ID : S40206

Actuator Type: A5L2.1

Actuator Mode : Gimbal-less Dual-Axis Quasistatic

Mirror Type and Size : Bonded mirror of 7.5mm diameter

Mirror Coating : Aluminum

Maximum Mech. Angle - X Axis [degrees] : 1.0222

Maximum Mech. Angle - Y Axis [degrees] : 1.0500

Maximum Vdifference - X Axis [V] : 158

Maximum Vdifference - Y Axis [V] : 158

Driver Bias Voltage (Vbias) [V] : 80

Maximum Mech. Angle - Coupled Axes [degrees] : 1.2250

Resonant Frequency - X Axis [Hz] : 515

Resonant Frequency - Y Axis [Hz] : 518

Quality Factor - X Axis : 28

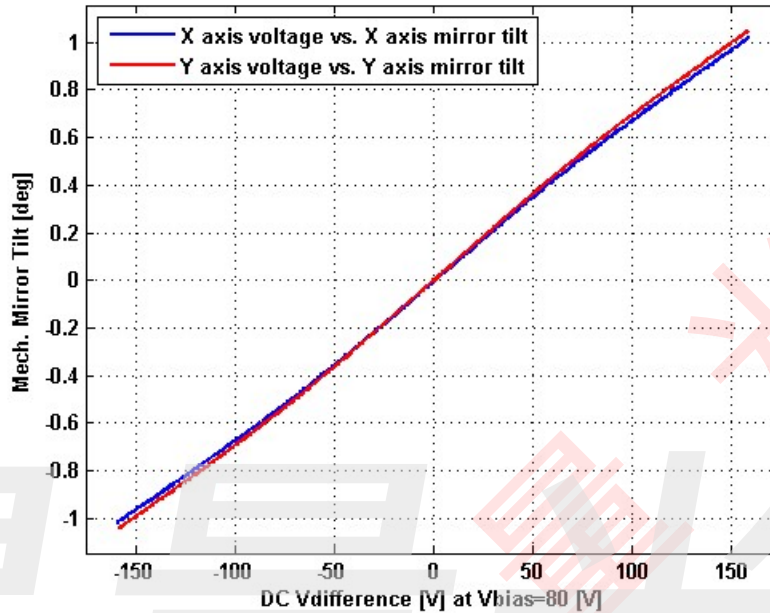
Quality Factor - Y Axis : 25

Recommended LPF Cutoff Frequency (6th Order Bessel) [Hz] : 240

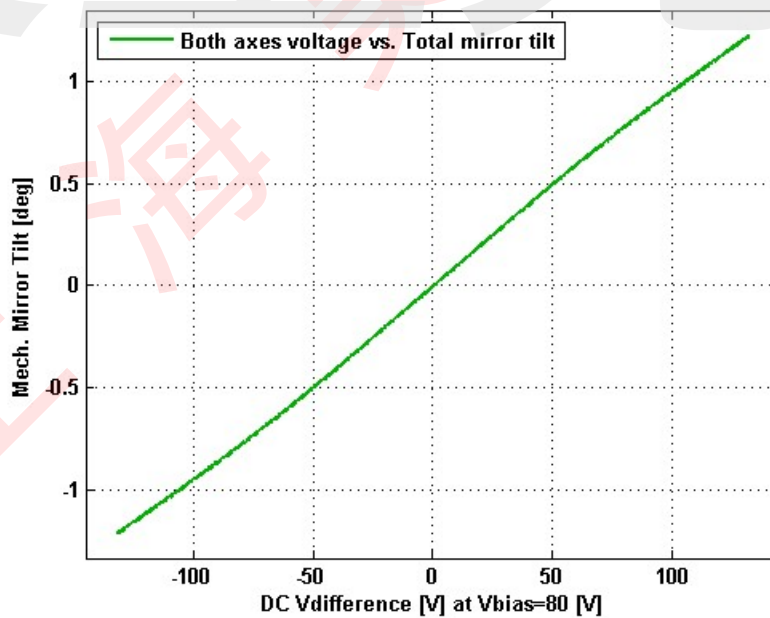
Date and Time Report was Created: 07-Sep-2017 at 10:50:35

Static Response

Voltage vs. Mech. Angle - Individual Axes

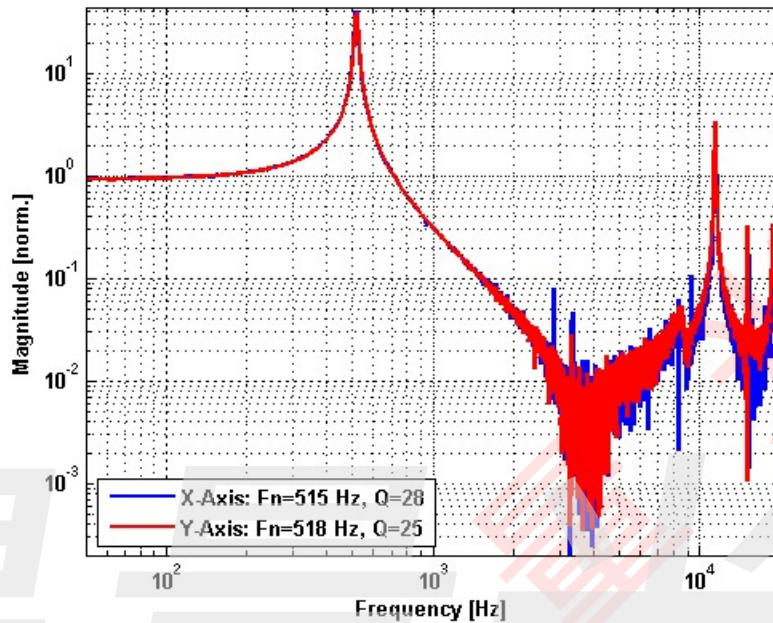


Voltage vs. Mech. Angle - Coupled Axes

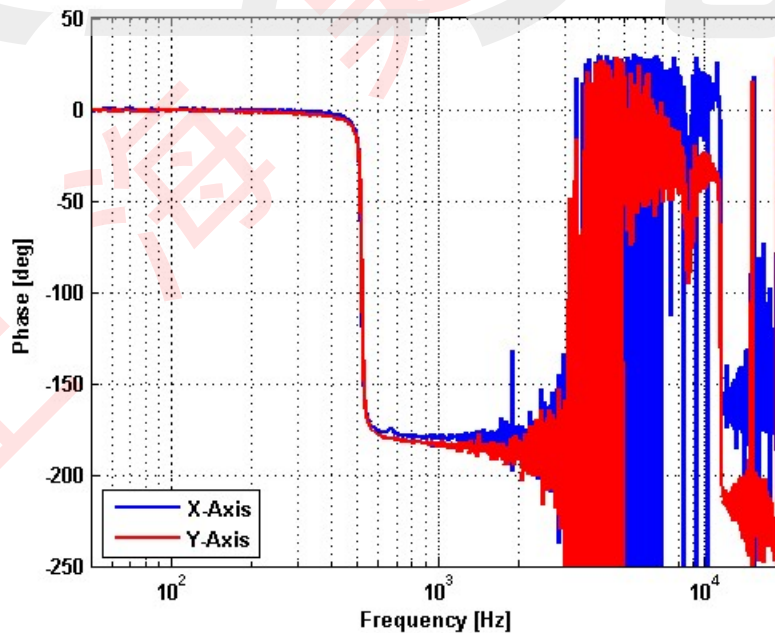


Frequency Response

Small Signal Frequency Response - Magnitude

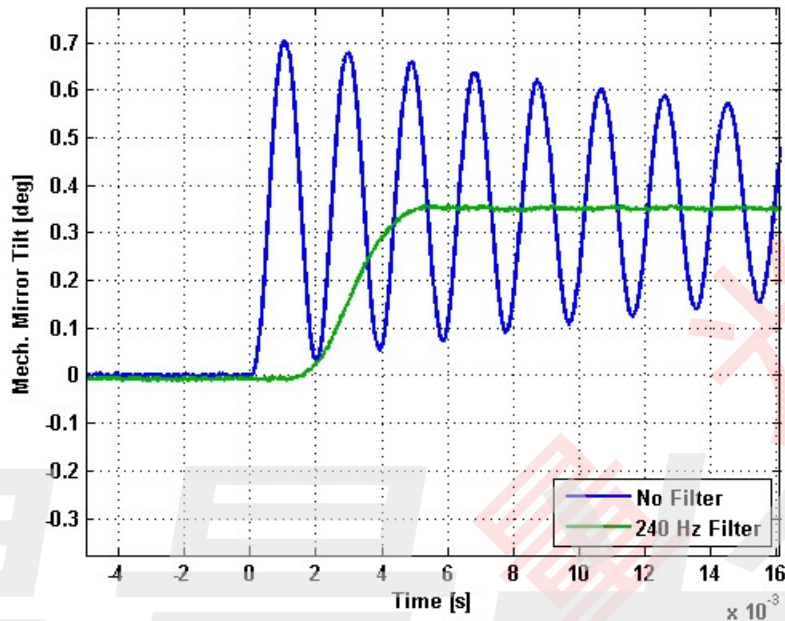


Small Signal Frequency Response - Phase

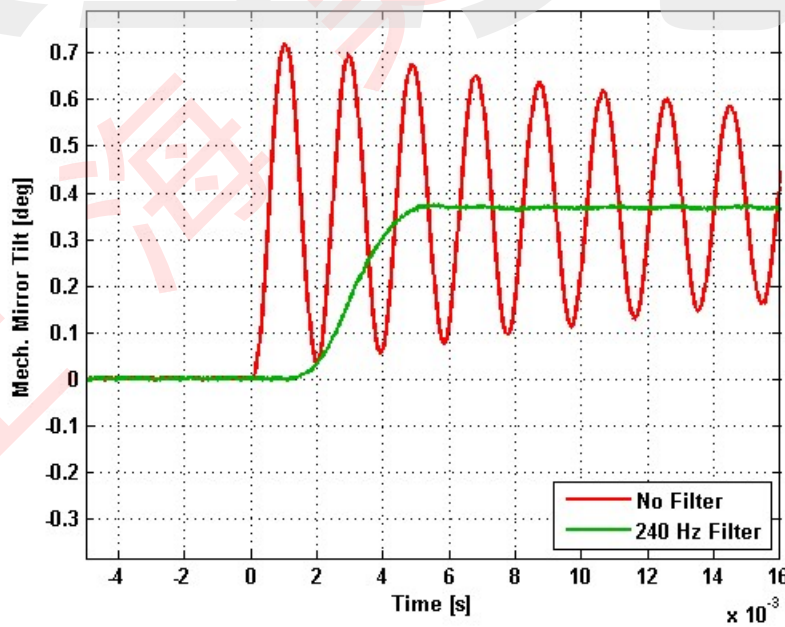


Step Response

X-Axis Step Response

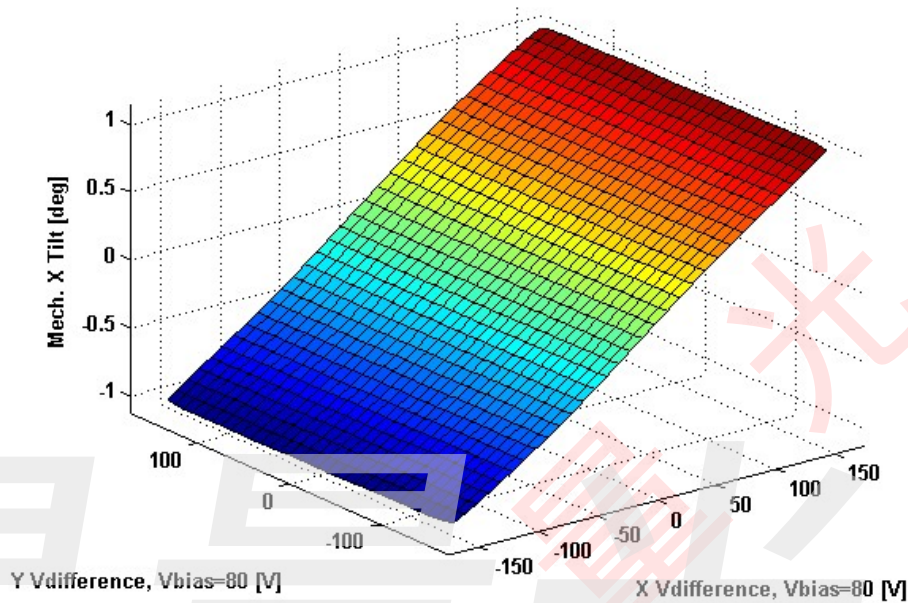


Y-Axis Step Response

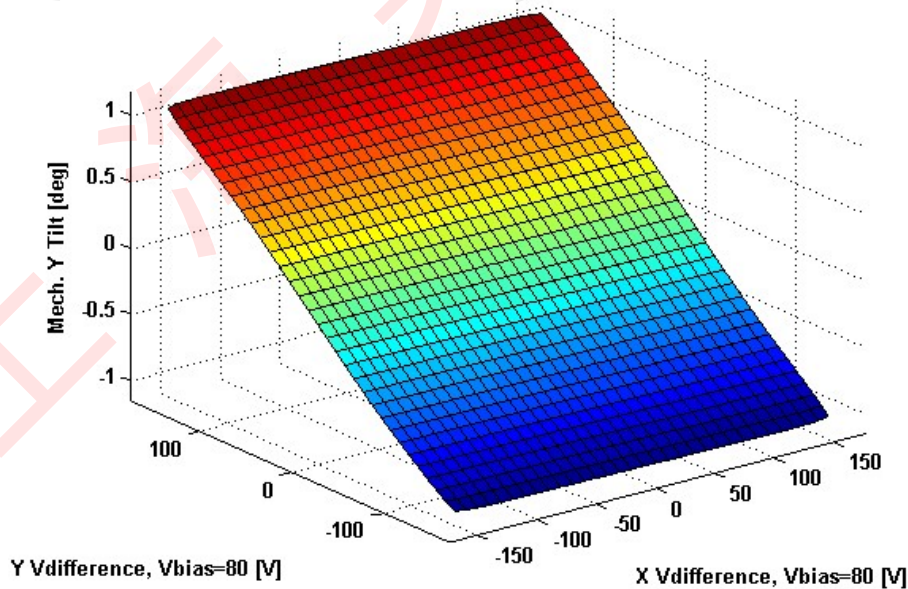


2D Lookup Tables

Voltage vs. X Mech. Angle - Lookup Table



Voltage vs. Y Mech. Angle - Lookup Table



Y vs. X Tilt - Addressable Mech. Angles

