



EFOA-SH. Femtosecond Er Fiber Laser with Built-in SHG

- 780 nm wavelength
- >3 nJ @ 780 nm pulse energy
- Down to 80 fs typical pulse duration
- Small footprint, turn-key operation
- Highly stable PM scheme for 24/7 operation



EFOA-SH ultrafast fiber laser system with SHG

Product overview

Second harmonic of Er-doped fiber laser operates at wavelength of 780 nm and in a number of applications can replace the powerful yet less reliable solid-state Ti:S lasers. Easy to use design, turn-key operation, small footprint greatly facilitate any research in which the laser is involved. Lack of laser experience is not a problem with the fiber lasers, only general electronics and light physics knowledge is required to work with the unit.

EFOA-SH is also a perfect source for amplifier system seeding due to one-box compact design and lack of expensive pump laser as in case of Ti:S solid-state seed. The EFOA-SH is based on PM-fiber scheme providing best stability and reliability values.

EFOA-SH technical specifications

	EFOA-SH	EFOA-SH-HP
Pulse Width (FWHM) at 780 nm	<100* fs (typ. 85 fs)	<120 fs (typ. 100 fs)
Wavelength (fixed, switchable**)	780±5 nm and 1560±10 nm	
Repetition rate (fixed)***	65±5 or 80±5 MHz	
Outputs		
Power output (switchable**), free-space	>140 mW at 780 nm >260 mW at 1560 nm	>200 mW at 780 nm >440 mW at 1560 nm
Long-term output power stability (8 h, ±1° C)	<1 % rms at 780 nm <0.5% rms at 1560 nm	
Spatial mode	TEM ₀₀ , M ² <1.2	
Beam divergence	<1 mrad at 780 nm <2 mrad at 1560 nm	
Polarization	linear	
Service optical output	1560 nm, FC/APC (~1 mW)	
RF sync output	SMA connector	
Mode-lock status	SMA connector (3.5/0 V) and LED	
General specs		
Operating temperature	22±5 °C	
Warm up time for rated accuracy	20 min	
Power supply	110...220 V, 50/60 Hz	
Dimensions, mm		
Laser head	278x242x111	320x260x120
Control unit	291x202x134	470x385x160
* - <80 fs pulse duration is available upon request;		
** - simultaneous dual output is also possible upon request;		
*** - chosen at order, 100-MHz configuration is also available; other values upon separate request.		

Applications:

- Amplifier systems seeding
- Terahertz generation and detection
- Multi-photon microscopy
- Ultrafast spectroscopy
- Semiconductor device characterization
- Supercontinuum generation
- Optical coherence tomography
- Telecommunications
- Optical metrology

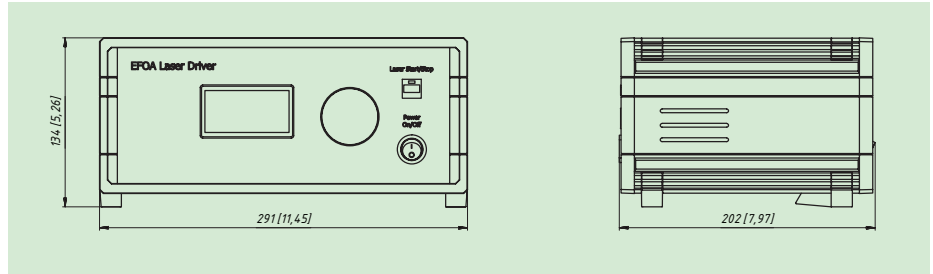
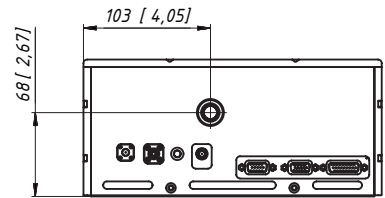
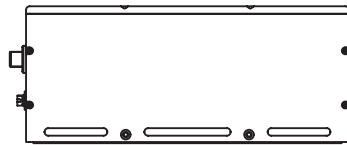
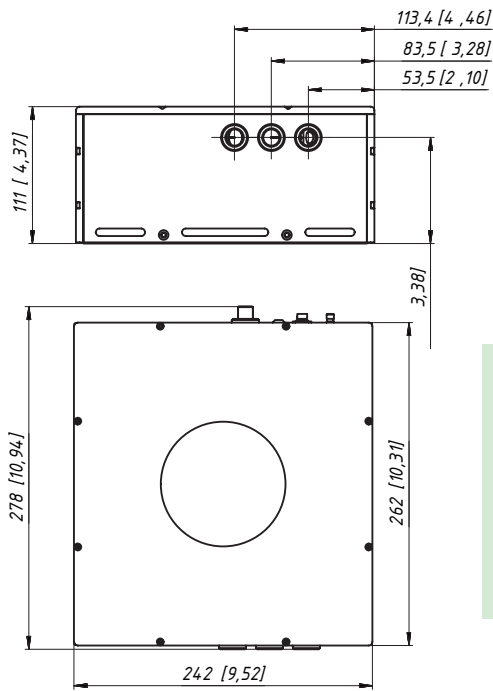


AVESTA

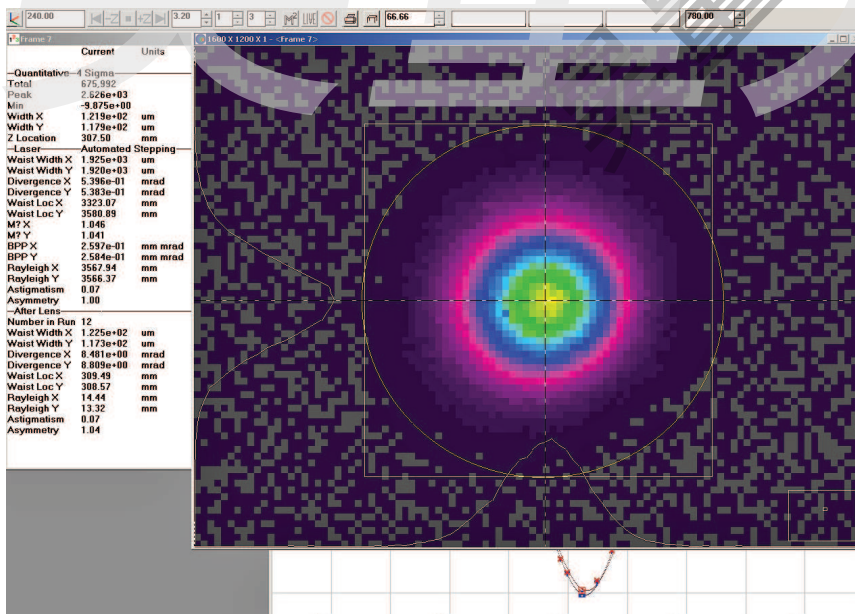


Avesta Ltd., 11 Fizicheskaya Street
Troitsk, 108840, Moscow, Russia
Tel.: +7 (495) 967-94-73
Fax: +7 (495) 646-04-95

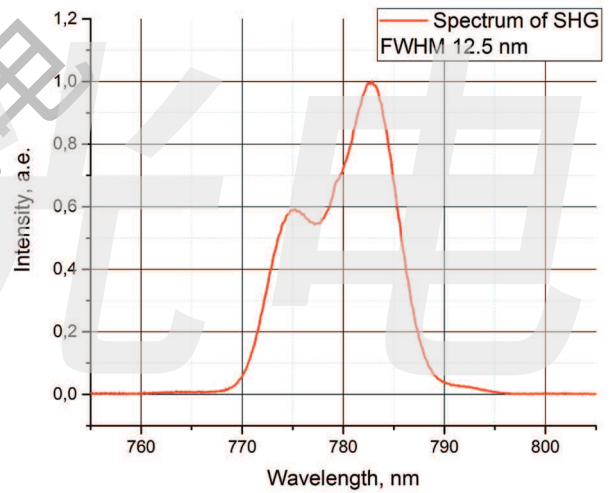
fs@avesta.ru
www.avesta.ru



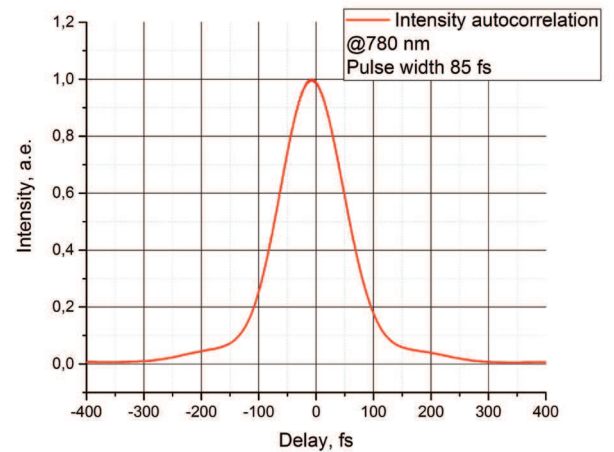
EFOA-SH optical head and PSU (mm [inches])



EFOA-SH beam shape, divergence and M² measurements at 780 nm



Typical spectrum of the EFOA-SH Laser system



EFOA-SH autocorrelation trace at 780 nm

[Spark-920nm 飞秒激光器](#)



[Spark-920/1064nm 激光器 \(功率可调、可光纤输出\)](#)



[Calmar-780nm 激光器](#)



[Calmar-1550nm 激光器](#)



[Avesta-715-980nm 钛宝石激光器](#)



[Cycle-1300/1700nm 双波长激光器](#)



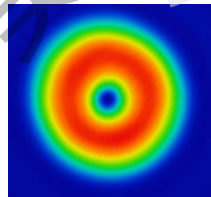
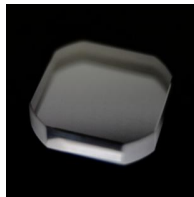
[Oxxius - 多波长合束激光器](#)

[Meadowlark-纯相位液晶空间光调制器 \(SLM\)](#)



[Meadowlark-液晶相位延迟器、螺（涡）旋相位板](#)

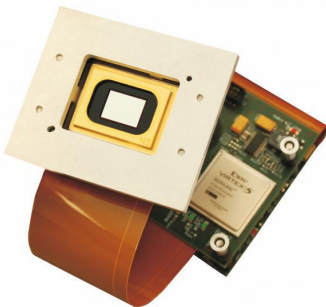
[Forth DD-纯振幅液晶空间光调制器 \(LCOS\)](#)



[ViALUX-DMD 数字显微镜](#)

[Conoptics-电光调制器 \(EOM\)](#)

[Gooch&Housego-声光调制器](#)



详情请点击图片链接下载数据单

www.auniontech.com

[Ximea -高性价比sCOMS相机](#)



[Lambert -高速荧光相机](#)



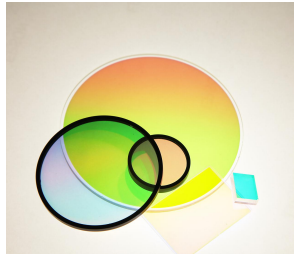
[Photonscore -TCSPC单光子相机](#)



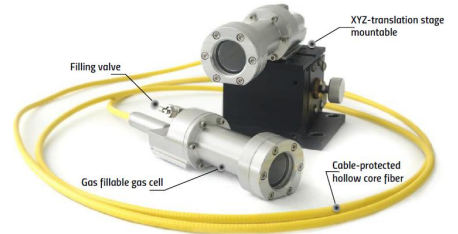
[Photon etc -深度制冷短波红外相机](#)



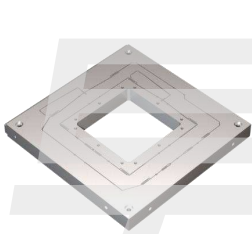
[Chroma-荧光滤光片](#)



[PHOTONICS BRETAGNE - Kagome光子晶体光纤](#)



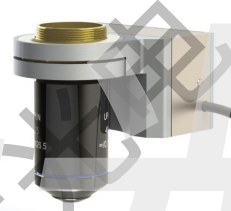
[PIEZOCONCEPT-压电平移台](#)



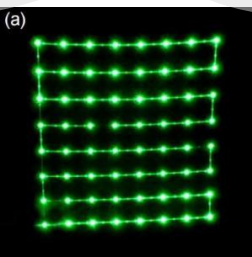
[PIEZOCONCEPT-物镜扫描台](#)



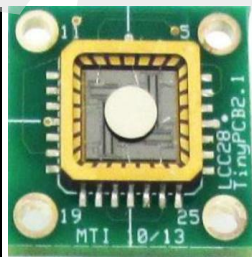
[ASI-显微镜载物台](#)



[Mirrorcle-MEMS扫描镜](#)



[TAG -超快声光可变焦透镜](#)



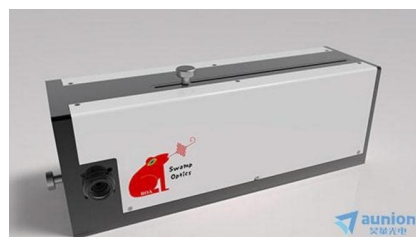
[Minus K -桌面型隔振平台](#)



[Avesta-棱镜色散补偿器](#)



[Swamp Optics-BOA脉冲压缩器](#)



[Avesta-双子吸收自相关仪](#)



详情请点击图片链接下载数据单

www.auniontech.com