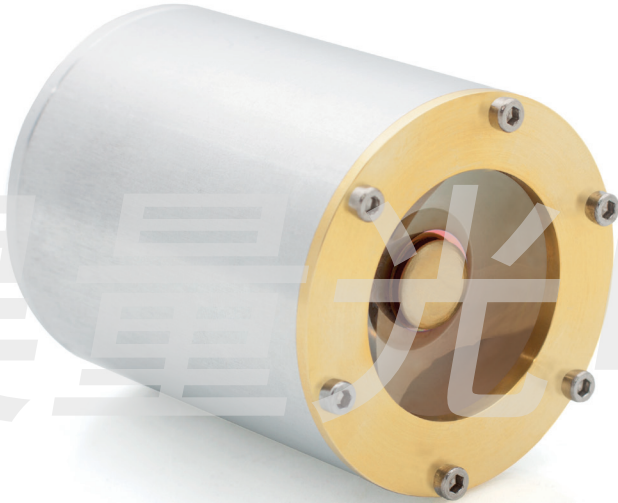


Thermoacoustic Emitter

broadband air-coupled ultrasound source



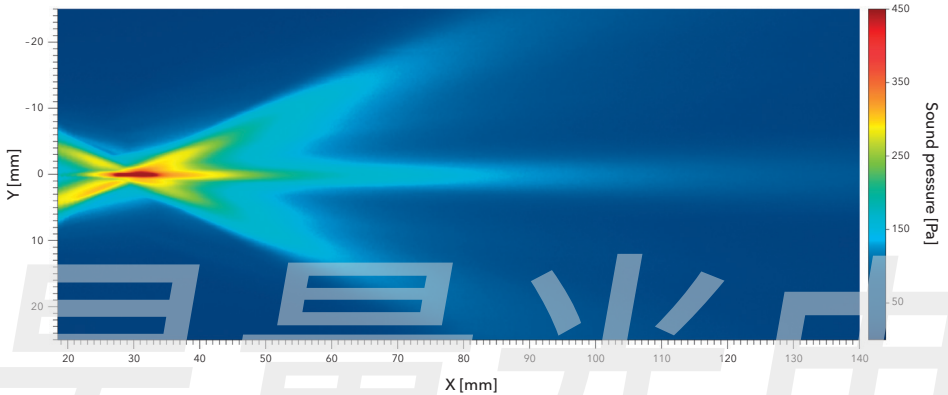
moving sounds without moving parts

xarion
laser acoustics

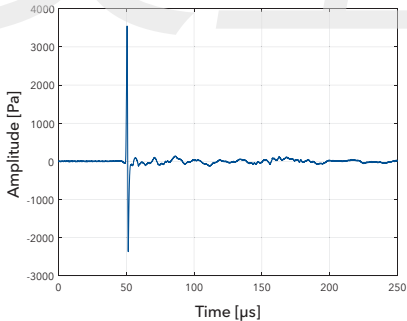
Features

Emitter type	thermoacoustic
Frequency range	10 kHz - 1 MHz
Peak pressure	>2000 Pa (>160 dB _{SPL})
Pulse width	1 μ s (FWHM)
Acoustic field	focussed

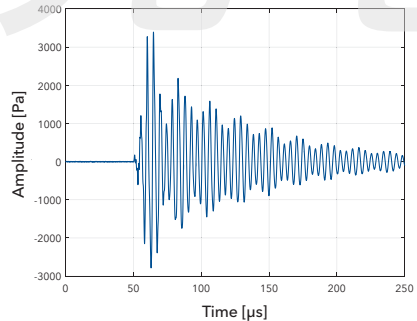
Focal spot size	\varnothing 1 mm
Focal distance	20 or 30 mm
Operating voltage	0 - 750V
Size	\varnothing 42 mm / 52 mm
Weight	250 g / 400 g



Acoustic field of a thermoacoustic emitter measured with an Optical Microphone



Impulse response of the thermoacoustic emitter



Impulse response of a piezoelectric emitter

xarion
laser acoustics

moving sounds without moving parts