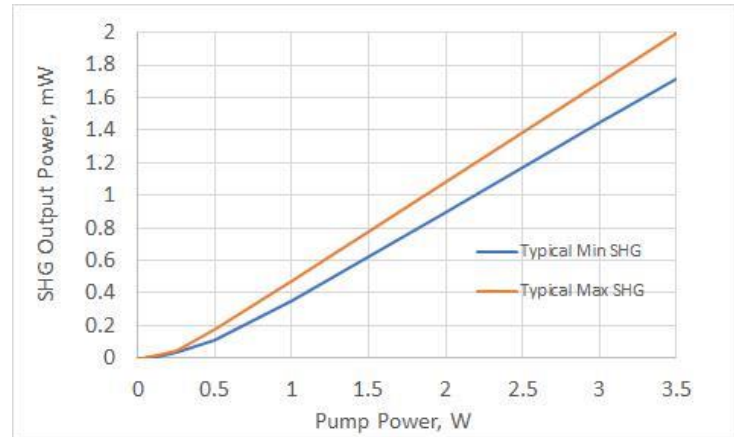


Free space PPLN Chip for CW Second Harmonic Generation (SHG)

Designed for Researchers who need up to XW output power - a reliable way of SHG for Input wavelengths 1558nm -1562nm

- Simple to use
- Flexible over a range of Input powers up to 3.5 W
- Compatible with existing PV40 Oven
- Compatible with existing OC2 and OC3 Temperature controllers



Specification

Non-Linear Interaction	Type 0 (ee-e)
Input Polarisation Alignment	<i>e-pol</i> (polarisation axis aligned to the crystal thickness)
Input wavelength range for SHG [nm] *	1558-1562
Output wavelength range [nm]*	779-781
Temperature tuning range from ambient [°C]	30 to 70
Recommended maximum CW pump launch [mW]	1000
CW SHG output @300mW Input [mW]	>35
Typical module efficiency (@300mW in) [%]	>12
Typical MFD @1560nm (2nd moment) ±20%	x = ~10.0µm y = ~8.8µm
Typical NA @1560nm ±20%	x = ~0.094, y = ~0.113
Typical MFD @780nm (2nd moment) ±20%	x = ~9.9µm y = ~8.3µm
Typical NA @780nm ±20%	x = 0.092, y = 0.085
End-facet AR Coating (Both Facets)	780nm/1560nm Dual Band
Chip Dimension [mm]	40 x 5 x 1, 5.35° Parallelogram
End Facet Angle (Relative to Waveguide Length)	5.35°

Contact us to discuss availability and pricing

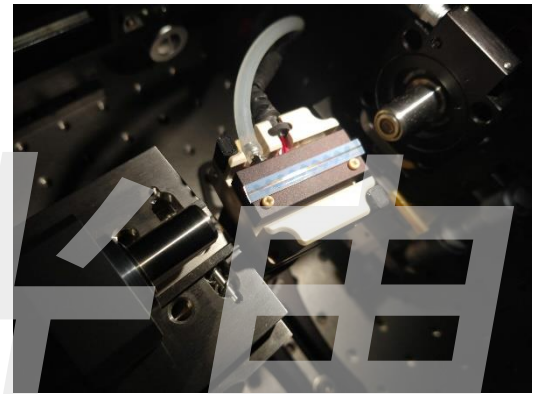
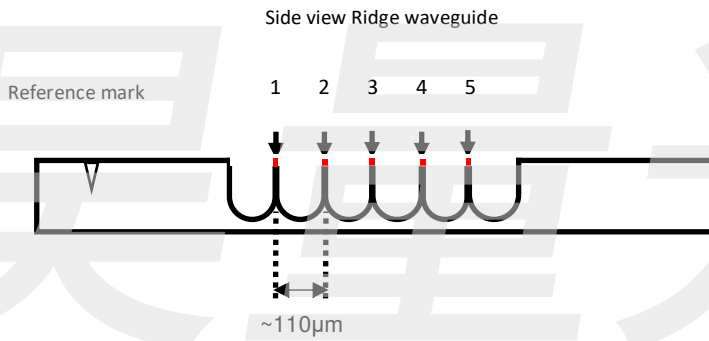
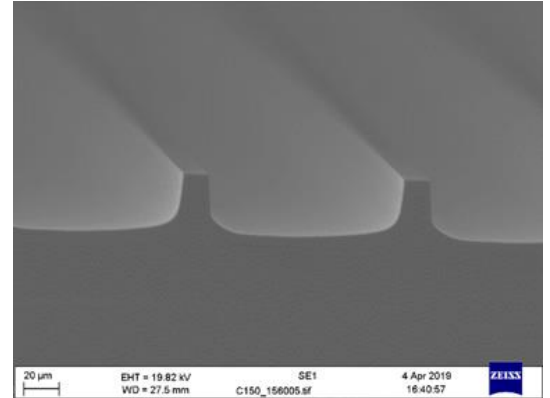
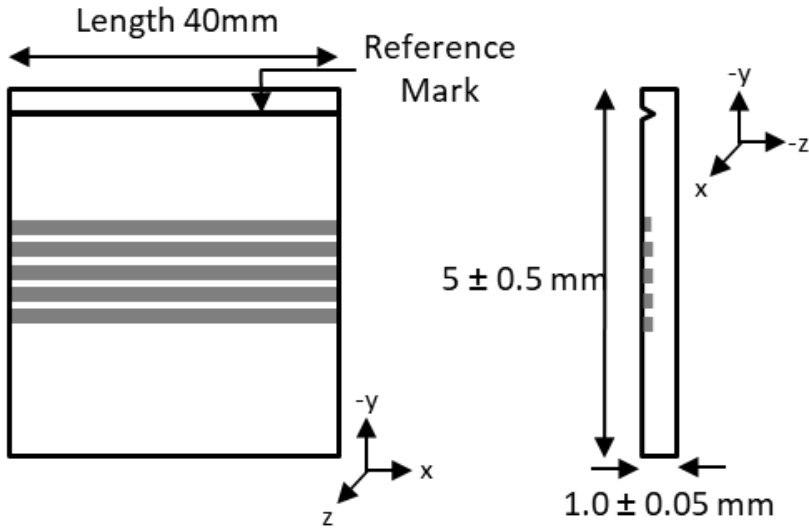
Designed for Researchers who need up to XW output power - a reliable way of SHG for Input wavelengths 1558nm -1562nm

Email sales@covesion.com
 Phone +44 (0)1794 521 638
 Web www.covesion.com



Unpackaged Waveguide Chip WG-SHG1560-40

Version 3.0/2021



Accessories

OC3 Temperature Controller

PV40 Oven



Contact us to discuss availability and pricing

Email sales@covesion.com
Phone +44 (0)1794 521 638
Web www.covesion.com

covesion

上海昊量光电设备有限公司 Phone: 4006-888-532 WeChat: auniontech Website: www.auniontech.com E-mail: info@auniontech.com