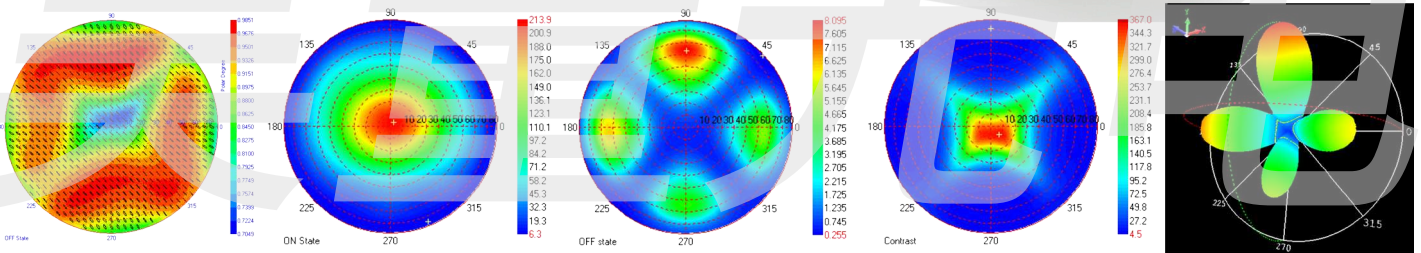


# EZContrast



## FEATURES

- Non contact viewing angle measurement
- High color accuracy
- Resolution: 0.04°/CCD pixel
- Cooled sensor

## APPLICATIONS

- Viewing angle analysis for QC or R&D
- Viewing angle polarization as add-on
- Large spot size for W series (6mm)

EZContrast Series allows to measure viewing angle luminance and color data. This system can make accurate color measurement for any type of stimulus. ELDIM is manufacturing on its own all the key components of its system, including the optics thanks to advanced technologies.



ELDIM

OPTICAL METROLOGY FOR DISPLAYS

Specifications		EZContrast			
		L80	L80W	XL88	XL88W
<b>Field coverage</b>	Incident angle Azimuth angle	0-80° 0-360°		0-88° 0-360°	
<b>Measuring area</b>	Maximum diameter Minimum diameter	2mm 100µm	6mm 300µm	2mm 100µm	6mm 500µm
<b>Optimum distance</b>	Ensure light coming from same spot at any angle	3.7mm	2.5mm	1mm	
<b>Accuracy</b>	Luminance Chromaticity (x,y) RMS Stokes vector with band pass filter (option)	±3% 0.002 ±3%	±3% 0.002 ±3%	±3% 0.002 ±3%	±3% 0.002 ±3%
<b>Performances</b>	Peltier cooled grade I Angular resolution A/D converter Angular optical resolution	Yes 0.08°/ccd pixel(*) 14-16 bits ±0.3°(*)	Yes 0.04°/ccd pixel(*) 14-16 bits ±0.2°(*)	Yes 0.09°/ccd pixel(*) 14-16 bits ±0.3°(*)	Yes 0.05°/ccd pixel(*) 14-16 bits ±0.2°(*)
<b>Chromaticity</b>	Color Filters Additional Filters	Yes Optionnal	Yes Not available	Yes Optionnal	Yes Optionnal
<b>Measurement Modes</b>	Luminance Chromaticity Polarization (option) Radiance spectrum on axis (option)	Yes Yes Yes,Auto Yes,Auto	Yes Yes No Yes,Auto	Yes Yes Yes,Auto Yes,Auto	Yes Yes No Yes,Auto
<b>Luminance Range</b>	Minimum (cd/m2) Maximum with density (option)	0.001 1 000 000	0.001 500 000	0.001 1 000 000	0.001 500 000
<b>Short-term repeatability</b>	Luminance Chromaticity (x,y) RMS Stokes vector (option)	±0.02% 0.001 ±0.5%	±0.02% 0.001 ±0.5%	±0.02% 0.001 ±0.5%	±0.02% 0.001 ±0.5%
<b>Polarizing elements</b>	For polarization measurements	3 pol , 2WVP Automated	Not available	3 pol , 2WVP Automated	Not available
<b>Reflective options</b>	Collimated & diffused	Available	Not available	Available	Not available
<b>Spectro radiometer option</b>	Measurement on axis for self calibration	Available	Available	Available	Available
<b>Spot viewer</b>	For position adjustment	Color CMOS camera, USB 2.0 interface			
<b>condition</b>	Temperature range standard Temperature range (option) Humidity range (non condensing)	0 to 30°C -40 to 80°C 0 to 85%	0 to 30°C -40 to 80°C 0 to 85%	0 to 30°C -40 to 80°C 0 to 85%	0 to 30°C -40 to 80°C 0 to 85%

(\*) The system's resolution must be considered according to the effective optical resolution.

Specifications can be change without notice