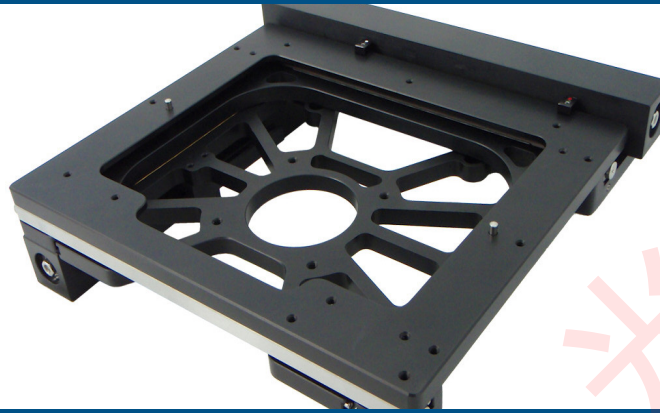


MS-2000 Low Mass XY Stage



The MS-2000 Low Mass XY stage has been specifically designed to reach thermal equilibrium faster with 3/4 the mass of a regular stage while retaining ASI's legendary precision. The stage retains the high resolution, and high repeatability, of all ASI microscope stages. All axes derive their precise control through the use of closed-loop DC servomotors employing high-resolution rotary encoders for positioning feedback. By using closed-loop control of the stage position, there is no chance that the stage will become lost, as can occur with open-loop micro-stepped stages after a number of moves and direction changes. The MS-2000 XY stage utilizes crossed-roller slides, high-precision lead screws, and zero-backlash miniature geared DC servomotors for smooth and accurate motion. The microprocessor-controlled MS-2000 control unit provides for RS-232 and USB communication with a host computer.

Features

- Three-fourths the mass of a regular ASI stage
- Closed-loop DC servo control of the X and Y axes for precise positioning
- Wide dynamic speed range with XY joystick control
- Works with ASI's proven Z-axis drives
- Backlit LCD display shows the coordinates
- "Zero" and "Home" button for simple stand-alone operations
- Compact ergonomic tabletop control unit size is 6"D x 9"W x 3"H
- Microprocessor control with RS-232 serial and USB communications
- Proven operation with many popular software packages
- Suitable for stand-alone, OEM, and specialty applications

Specifications for Standard Configuration

| | |
|---|-----------------|
| XY axis range of travel | 100 mm x 100 mm |
| XY axis resolution (rotary encoder step) | 0.022 μ m |
| XY axis RMS repeatability | < 0.7 μ m |
| XY axis maximum velocity | 7 mm/sec |

Lead Screw Options

| Lead Screw Pitch Options | Rotary Encoder Resolution | Maximum Speed |
|--------------------------|---------------------------|---------------|
| 12.70 mm (Super-coarse) | 44 nm | 14 mm/sec |
| 6.35 mm (Standard) | 22 nm | 7 mm/sec |
| 1.59 mm (Fine) | 5.5 nm | 1.75 mm/sec |
| 0.635 mm (Extra-fine) | 2.2 nm | 0.7 mm/sec |

Linear Encoder Options

| Axis | Resolution | Scale Accuracy |
|------|------------|-------------------------------------|
| XY | 10 nm | \pm 3 μ m per length of scale |