



## AFFORDABLE OPTICAL COHERENCE TOMOGRAPHY

# IT'S OCT. ONLY DEEPER.

**It's OCT. Only Deeper.** At 1310 nm, the OQ StrataScope images about twice as deep as our 840 nm OCT, the OQ LabScope. That means more imaging data from tissue including skin, bone, teeth and industrial samples such as silicon.

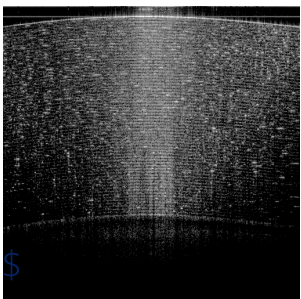
**It's flexible.** Includes horizontal, vertical, radial, and circle scan options. Size can be set for all scan types. Volume images (C-scans) range from 64x64 up to 512x512 voxels.

**It's accurate.** Ability to precisely examine, monitor and measure tissue structures and gauge product integrity.

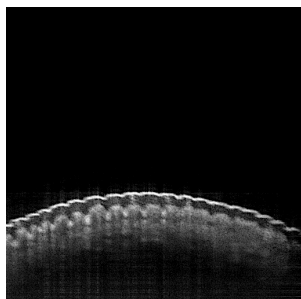
**It's compact.** About the size of a shoe box, so it's portable, won't crowd your bench or require a cart.

**It's easy to use.** Quick setup. Simple to operate. Easily connects to your network via built-in wi-fi.

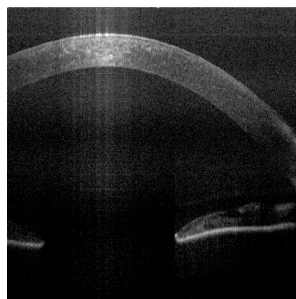
### 1310 NM OCT IMAGES



1. Layers of Scotch Tape



2. Skin on Human Finger



3. Human Cornea

### LABORATORY-GRADE PERFORMANCE

Image Size (pixels)	512 x 512
Depth Resolution	14 $\mu\text{m}$ in air, 10 $\mu\text{m}$ in tissue
Imaging Depth	4.5 mm in tissue (maximum theoretical)
Transverse Resolution	20 $\mu\text{m}$
Scan Range	7 mm linear, 5 mm x 5 mm volume
A-Scan Line Rate	18,000/sec
B-Scan Image Rate	30/sec
Sensitivity (OSNR)	100 dB
Output Power	~2 mW
System Size (w/d/h)	19cm x 33cm x 15cm
Scanner Size (w/d/h)	4.1cm x 17.2cm x 6.7cm
System Weight	2.72 kg

Aunion Tech Co.,Ltd

Tel: 4006-888-532 Website: [www.auniontech.com](http://www.auniontech.com)

Add: 3rd Floor, Building 6, 2007 Hongmei Road, Xuhui District, Shanghai 201103 P.R. China

上海昊量光电设备有限公司 Phone: 4006-888-532 WeChat: Auniontech Website: [www.auniontech.com](http://www.auniontech.com) E-mail: [info@auniontech.com](mailto:info@auniontech.com)